

Churchlands Senior High School Board 2018



John M Gillon (Chair)

John is a member of the Churchlands Alumni and his many achievements as a student include serving as Head Boy in 1968. John has degrees in Commerce, Jurisprudence and Law, has been a Fellow of the Australian Society of Certified Practising Accountants and is a Notary Public. He is currently Principal at Gillon & Associates,

Commercial Lawyers and Consultants where he practises corporate, commercial and property law. John brings his experience as a director of numerous public and private companies and his commitment to education and service to the board. He is the inaugural Chairman of the Churchlands Senior High School Foundation (Inc). John is establishing a truffle farm and gardens in the Ferguson Valley.



Neil Hunt (Principal)

Neil commenced his career with country service teaching Mathematics and Science in district high schools before returning to Perth as a Mathematics teacher. He briefly left the Education Department taking roles as a Head of Department in Mathematics in the private system, and at an International College before returning to the Education Department.

He quickly progressed through the ranks gaining positions as an Education Officer, a Program Coordinator and Deputy Principal. Neil's first appointment as a Principal was at Swan View Senior High School in 1998 before gaining selection at Churchlands Senior High School in 2003.



Tracey Gralton (Alumni Representative)

Tracey is a member of the Churchlands Alumni, having attended Churchlands as a Music student from 1976-80. Five of her children are also graduates and she has a daughter currently at Churchlands, Linnet in Year 9. Tracey has degrees in Music and Education, and a Masters in

Educational Measurement and currently works for the School Curriculum and Standards Authority in population testing programs such as NAPLAN and OLNA. Tracey has served on the Churchlands P & C, and the Music Parents' Committee and highly values the rich and thorough education Churchlands offers. She is involved in other community groups and continues to enjoy music; playing the piano, singing in a choir and attending concerts.



Jane Hegarty (Staff Member)

Jane has lived and worked in the local community for over twenty five years. In addition to being a teacher of Media, Jane has contributed to the formulation of the school's classroom instructional strategies designed to enhance the capacity of our teachers. As a trained conferencer she has

observed teachers in the classroom as they implement and trial these new strategies. Jane has also contributed to teachers' professional learning and curriculum development through her work on various committees. Jane brings the perspective of the classroom teacher and Head of Learning Area to the board.



Grant Brinklow (Elected Parent Member)

Grant has four children; Lily who is nineteen and in her second year of tertiary studies at Curtin University, Harry and Charlie who are in Year 9 at Churchlands, and William who is five and at pre-primary.

Grant is the Chief Executive Officer of Sandalford Wines and commenced in this role in mid

2005. He is responsible for the entire wine and tourism operations at the company's Swan Valley and Margaret River locations. He holds a double major in Accounting and Business Law and is a qualified Chartered Accountant.

Grant is a Board Member of "Restaurant and Catering Institute - WA Branch", "Perth Regional Tourism Authority - Experience Perth" and the "Perth Convention Bureau".



Adrian O'Brien (Elected Parent Member)

Adrian is currently the Information Manager at Swan Christian Education Association and has been an IT Manager for the last fifteen years. Adrian has been an active member of the Churchlands P & C and the Music Parents' Committee since his daughter Yanika joined the school in 2013. He has also

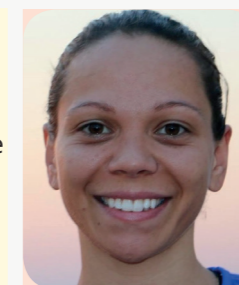
represented the P & C on the School Board and IT Committee. With his daughter Kaiya joining the school in 2016, Adrian hopes his experience and knowledge will assist the board and school with their current and future initiatives.



Kim Hudson (Staff Member)

Kim is currently working in the position of Middle Secondary School as the Head of Year 9. In that role she supports the Associate Principal (Middle Secondary School) in the areas of pastoral care and behaviour support for students in Year 9. Kim has been at Churchlands for over twenty years having taken a position

here as a Society & Environment teacher early in her career. Kim trained at the Western Australian College of Education in Nedlands after completing a Bachelor of Arts majoring in History at UWA. Kim is able to provide the Board members with a unique insight into the social development of students and the issues that some of them may need support in. In her role, Kim also works closely with the Associate Principal in supporting aboriginal education, AEP and students with special educational needs.



Allirra Winmar (Community Member)

Allirra is a Balladong and Gija woman and spent the early years of her life in the small wheatbelt town of Quairading. Allirra graduated from Churchlands Senior High School in 2010.

In 2017, Allirra was selected in a group of twelve people to take part in the Indigenous Marathon project and completed the New York Marathon in November 2017.

Allirra currently works for ICEA (Indigenous, Communities, Education and Awareness) Foundation as the Indigenous Engagement Officer. Reconciliation is an important part of creating a positive future for our country and will always be an important ingredient for a harmonious society. Being able to talk together about historical events will open up conversations that inspire development of mutual understanding, knowledge and respect.



Janet Pettigrew (Elected Parent Member)

Janet has had three children graduate from the school in 2013, 2016 and 2017.

Janet is the former Senior Vice President of the WA Council of State School Services and convener of the WACSSO Policy Committee. Over the past fifteen years she has held numerous Office Bearer positions

on School Boards, Councils and P & Cs. Janet has also been on the Board of the Metropolitan Migrant Resource Centre for three years and retired three years ago from the Chairperson's position.

For the past thirteen years Janet has been self employed as a professional performer, writer and civil celebrant. Prior to this she worked in management and campaigning roles for environmental and social advocacy organisations. Janet holds a Masters in Professional Communications.



Chris Porteous (P & C Representative)

Chris has a daughter Hannah in Year 9 studying French Horn through the Specialist Music Program. Chris is a previous P & C President and Convenor of the 2006 Churchlands SHS Music Tour. He has recently attained his Masters in Business Administration and is a licensed Inquiry Agent/Investigator

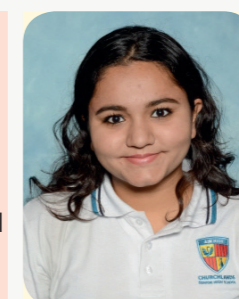
specialising in Corporate and Commercial Investigations. He is a trainer of Statutory Compliance for Government and currently the Fraud and Anti-Corruption specialist for Western Power.



Ethan Blume (Head Boy)

Ethan came to Churchlands from Kapinara Primary School as part of the Academic Extension Program and the Gifted and Talented Music Program in 2014. A self-confessed water baby he has represented the school in interschool swimming and numerous water polo competitions, both as a player and coach. Ethan has interests in Psychology and

Politics and Law, both of which he wishes to pursue at university and team together to form a future career.



Shrushti Jethva (Head Girl)

Shrushti came to Churchlands from Wembley Primary School in 2014 as part of the Academic Extension Program. She has been involved in the student leadership team since Year 8. Shrushti has participated in many community service activities in and out of school and her interests include Chemistry, Physics and French. She would like

to pursue study in Medicine at university, and hopes to eventually specialise in Neuroscience.

