

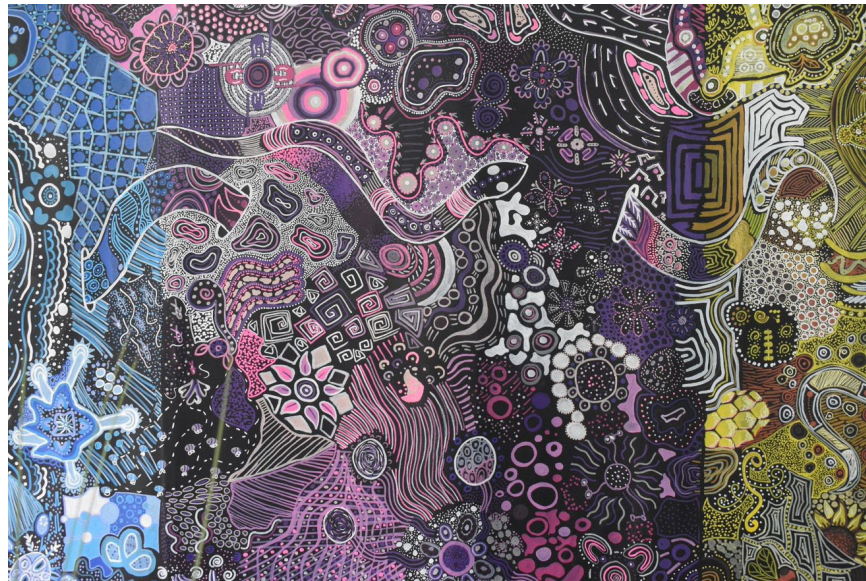


# CHURCHLANDS SENIOR HIGH SCHOOL

Year 12 ATAR Parent information Evening

# Acknowledgment of country

“I respectfully acknowledge the past and present traditional custodians of this land on which we are meeting, the Whadjuk Noongar people. It is a privilege to be standing on Noongar country. I also acknowledge the contributions of Aboriginal Australians and non-Aboriginal Australians to the education of all children and people in this country we all live in and share together – Australia.”



# Achievement of the Western Australian Certificate of Education

The first priority for all students is to ensure they meet the requirements of the Western Australian Certificate of Education (WACE).

Students must;

- Complete a minimum of 20 units, 10 units must be completed in Year 12.
- Achieve at least 14 C grades (or equivalents) with a minimum of 6 C grades in Year 12
- Complete at least 4 ATAR courses or complete at least 5 General courses (non-ATAR pathway) in Year 12. This can include Certificate courses.
- One pair of units in Year 12 from List A (English/Arts/Humanities) and List B (Science/Mathematics)
- Demonstrate minimum standard of literacy and numeracy through NAPLAN or OLNA

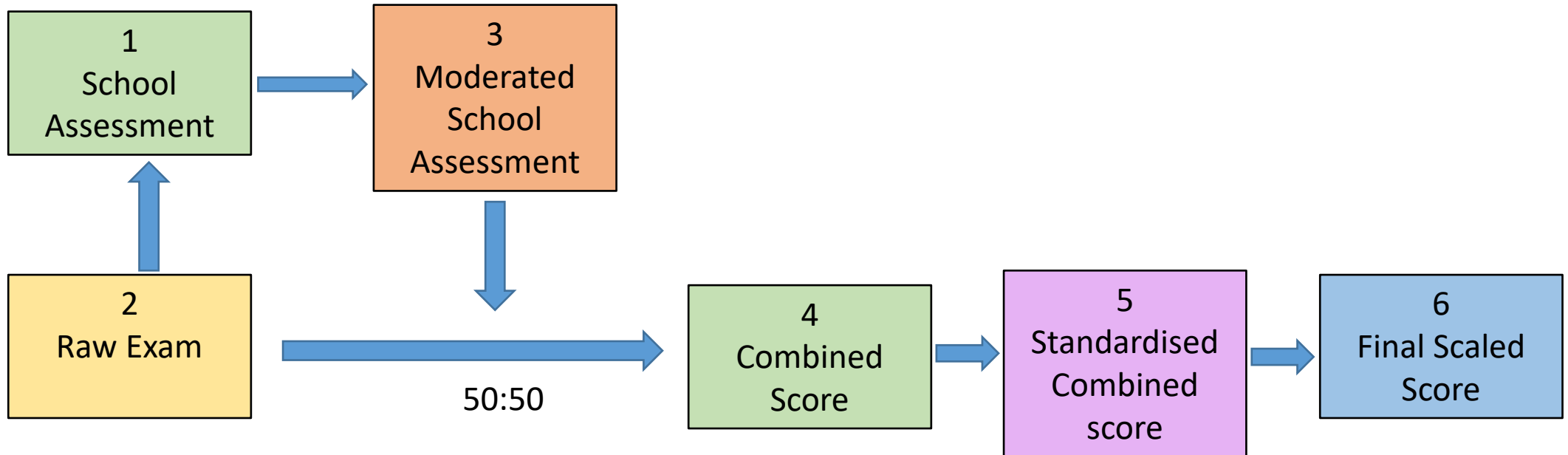
It is important to note that for all ATAR courses, students must sit the external WACE exam. If a student does not sit the exam this course is removed from their statement of results and can place achievement of WACE at risk.

# ATAR pathway


The aim should be to achieve the highest possible ATAR score to provide the greatest range of options for Universities and the courses they offer.

Direct entry into University involves the calculation of an ATAR – this uses the final result from the top four courses after the statistical adjustment process.

# The statistical adjustment process



1. The school assessment is moderated by the raw exam creating the moderated school assessment.
2. 50% of the raw exam and 50% of the moderated school assessment creates the combined score.
3. The combined score is standardised and then scaled to generate the final scaled score which is used for the ATAR calculation.



Moderation – this process is to ensure equity between schools. It evens out the differences in marking from school to school.

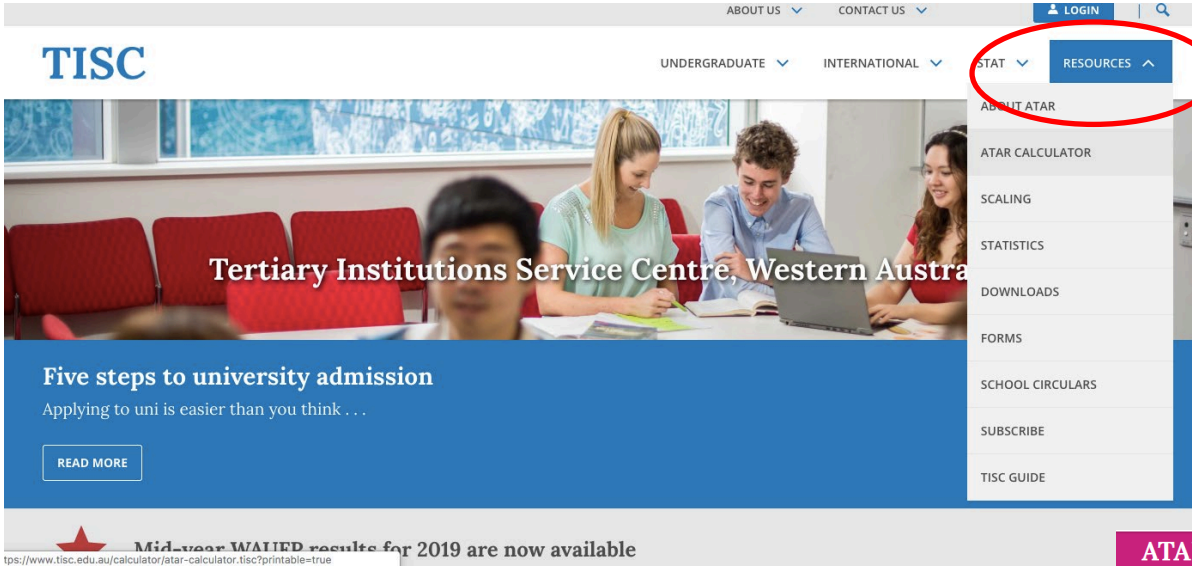
Standardisation – compensates for the differences in the difficulty of the exam from year to year.

Scaling – takes into account the degree of difficulty between courses. It aims to ensure students are not disadvantaged if they choose more difficult courses.

# Calculation of your ATAR

- The top four final scaled scores are added together to generate your Tertiary Entrance Aggregate (TEA).
- Add 10% from any Language, Maths Specialist and/or Maths Methods
- Your TEA is used to calculate your ATAR score. You can use the calculator on the TISC website to predict what your ATAR score may be

# ATAR Calculator



TISC

ABOUT US CONTACT US LOGIN

UNDERGRADUATE INTERNATIONAL STAT RESOURCES

ABOUT ATAR  
ATAR CALCULATOR  
SCALING  
STATISTICS  
DOWNLOADS  
FORMS  
SCHOOL CIRCULARS  
SUBSCRIBE  
TISC GUIDE

Tertiary Institutions Service Centre, Western Australia

Five steps to university admission  
Applying to uni is easier than you think ...  
READ MORE

Mid-year WAIED results for 2019 are now available  
<https://www.tisc.edu.au/calculator/atar-calculator.tisc?printable=true>

TISC website – [www.tisc.edu.au](http://www.tisc.edu.au)

## ATAR Calculator

This utility calculates the Australian Tertiary Admission Rank (ATAR), formerly known as the Tertiary Entrance Rank (TER), for a given WA Tertiary Entrance Aggregate (TEA) or Tertiary Entrance Score (TES).

1992 - 2007 TES	maximum 510
2008 - 2012 TEA	maximum 400
2013 - 2016 TEA	maximum 410
2017 onward TEA	maximum 430

This calculator should **not be used to predict future ATARs**.

Enter a TEA (or TES) and select a Year 12 completion year.

TEA (or TES) \*

eg 380.5

Year 12 completion year \*

CALCULATE PRINT CLOSE



# Calculation of your ATAR

## IMPORTANT

- Mathematics Applications and Mathematics Methods is no longer an unacceptable combination
- This means that students can complete study in both courses and use both in the calculation of their ATAR.
- This may be of benefit to some students, particularly those strong in Maths that are looking to boost their ATAR score.
- This applies to Year 11 and Year 12 students from 2023.

## ATAR RANKINGS

ATAR Ranking determines the course you can get into at university

Average Scaled Marks	ATAR in 2022 (no bonuses)
50	62
55	72
60	80.5
65	85.8
70	87.5
75	95
80	97.5

# ATAR Calculator

- Students will be given their predicted ATAR from Year 11 Semester 2 this week. Please discuss the predicted ATAR with your young person.
- This provides them with an idea of the impact of moderation, standardisation and scaling on each course.
- A predicted ATAR session will be provided on Wednesday outlining these processes and other important aspects that can have an impact on their final result. It's important that all ATAR students attend.
- Students will also receive a predicted ATAR from Semester 1 in Year 12

# Applying for University

- The standard process to apply is through TISC which is based on your ATAR score.
- Early offers have now become a common process. All five Universities now run their early offer process through TISC. Students complete their TISC application and the first preference will automatically be considered for an early offer if eligible. TISC calculates a predicted ATAR from the results in Year 11, Semester 2.
- Students must have met English competency requirements, this varies across Universities.
- University applications open 1 May.

# Languages – Non-school Candidates

- Students can enrol as a non-school candidate in a language. This option is for a range of languages that are offered interstate. It is the student's responsibility to enrol through the School Curriculum and Standards Authority.
- You must be enrolled in 3 or more ATAR courses at school
- Students will only sit the WACE exam.
- Applications close on Thursday 28 March, a fee is involved.
- An information session will be offered for interested students on Wednesday.

# University Scholarships

- There a multitude of scholarships available ranging from a one off \$1000 payment to over tens of thousands of dollars over the life of the degree.
- 2023 Churchlands had a Fogarty and John Curtin scholarship winner.
- As well as high academic achievement students require community involvement and often leadership experience. Get involved with our Community Service program
- Check University websites

# Effective study and revision

- Devise a study plan and stick to it. Research has shown that retention of information is linked to output - write notes, do practice questions and attempt past exam papers.
- There is a bank of past papers on the student one drive.
- Maintain a balance – eat healthy, exercise, get 8 hours of sleep and manage your social life effectively to meet your goals.
- Use the expertise of your teachers!

# Non-ATAR Pathway – University Entry

- Curtin, Murdoch and Edith Cowan Universities all offer portfolio entry into a range of courses. You do not need an ATAR score. The requirements vary for each University, do your research.
- Edith Cowan, Curtin, Murdoch and Notre Dame offer alternative pathways to University through their University Preparation programs. You must have achieved your WACE to gain entry.



# For students

- Our aim is to provide the opportunity and support to ensure all students achieve success. There is a range of people you can seek out for advice and support
- Mr Jamie Long – Associate Principal
- Mr Paul Siwek – Head of Year 12
- Mr Iain McAlpine – Career Development Practitioner
- Mr John Poland – Brighton House Leader
- Ms Adele Cornelius – Floreat House Leader
- Mr Roger Harris – Scarborough House Leader
- Ms Megg Howard – Trigg House Leader
- Mr Tim Morton – VET Coordinator
- Ms Mel Hutflesz – School Psychologist
- Mrs Jane Price – Equitable access adjustments

# For students

- Start now – set your goals and work hard toward achieving them
- There is limited time in Year 12, every day counts, be at school and engaged in every class
- Seek support when needed
- Good luck for a productive and successful year