



Churchlands Bytes

Rottneest Leadership Camp 4-6 February 2022

Eight Churchlands staff took 68 student leaders on camp (Friday to Sunday) to Rottneest. The student leadership team completed activities in regard to leadership, team bonding and planning for 2022.

Whilst there was plenty of fun to be had, there were also some gruelling planning sessions led by both staff and Head Girl Sienna Rawson and Head Boy Julian Tearney. Getting students to work in masks in an 80 year old hall in 40 degree heat is a big ask. To their credit the students came up with some big plans for Churchlands in 2022.

As expected from these top class students, the behaviour and feel of the camp was outstanding. They are a credit to our school and some of the best kids in the world!

Thanks to the staff who donated their time and attended for all or part of the weekend - the students were very grateful.



Mathematics Enrichment Program

Curtin University is running a special year-long Mathematics Enrichment Program to celebrate their Silver Jubilee. This program is suitable for a broad range of mathematically talented students. It will help participants to develop a sound mathematical understanding and to develop a range of mathematical problem-solving skills. More details about the program can be found at the following web page:

<http://about.curtin.edu.au/learning-teaching/science-engineering/school-of-electrical-engineering-computing-and-mathematical-sciences/mathematics-enrichment-classes/>

ICT Office - Help for students

Students and parents can click this useful link to access the ICT Help and Advice page. Find FAQs and the ability to message ICT with a query.

<https://www.churchlands.wa.edu.au/my-churchlands/ict/ict-help-and-advice-1>

Year 12 School Ball Optus Stadium

Tickets on sale for
'La Gala Royale'
on QKR Tuesday 22 February

Contributions and Charges Win Win Win

Pay your amount listed on the bottom of your contribution and charges by Friday 8 April 2022 and go into a draw to win back your payment! There will be 6 winners, one parent for each year group.



COVID- 19 Update Minimising the Risk

- Staff and students to wear masks properly at all appropriate times
- Hand sanitise regularly and have good personal hygiene
- Classrooms correctly ventilated and cleaned.
- Students to bring their own water bottles and fill from fountains
- Stay home if you have flu like symptoms and get tested.
- Inform Administration immediately if you test positive to a PCR test



Hot weather



With this hot weather can you please ensure you student has breakfast in the morning and brings a water bottle to school. Please continue to encourage them to drink water regularly throughout the day.



Your vibe
attracts your tribe!

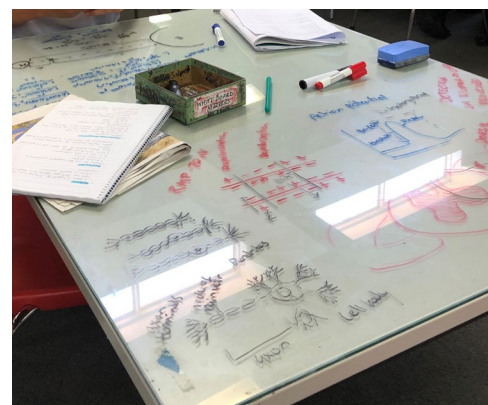
What's Coming Up?

	Term 1, 2022
Feb	
22	Year 9 Swimming Carnival
24	Year 8 Swimming Carnival
25	Year 7 Swimming Carnival
26	Year 6 AEP Testing
Mar	
1-4	Year 7 "Camp on Campus" in lieu of Year 7 Camp at Ern Halliday
7	Public Holiday
11	Year 12 School Ball - 'La Gala Royale' Optus Stadium

More From Your Library

We have some lovely book displays designed by our new Library Officer Mrs Ruthford. We welcome her to the Churchlands school and community - pop in and say hi to her.

Our private study students always use the library space in a productive manner for study and use a range of techniques that constantly amaze us!



**RUHANG
RY?**

**EVERY
FRI
BREAKFAST!**

8.15-9AM
& MILO
TOASTIES

ANY QUESTIONS? ASK KAT, LORRAINE, MITCH, MEL, NARELLE OR TERESA AKA: "BREKKY DREAM TEAM"

CHURCHLANDS
SENIOR HIGH SCHOOL

**Outside
F1**

*All
welcome*

FREE FOOD! FREE FOOD! FREE FOOD!

COVID SAFE BREAKFAST CLUB

- * Music
- * Games
- * Individual toasties given out by staff
- * Hand Sanitiser

A GOOD START TO YOUR DAY!

Year group separated with social distancing



After four weeks we have the following House Point tallies for Years 7-12

Brighton: 4579

Floreat: 3936

Scarborough: 3639

Trigg: 4054

House points can be awarded under the following categories:

- House Award: Community Service
- House Award: Creative and Cultural Endeavour
- House Award: General Capabilities
- House Award: Leadership
- House Award: Personal, social and environment skills
- House Award: Pursuit of knowledge

New for 2022

2022 P&C Committee

Gabriella Jerrat
President / Art Committee

Tracey Gralton
Music Parents Representative

Nandita Naroth
Vice President

Nikki Harvey
YouthCARE Representative

Shirley Godfrey
Treasurer / Uniform Shop Coordinator

Aarti Padhiar
Act Belong Commit Committee Representative

To be confirmed
Seretary

To be confirmed
P & C Communication Coordinator

Kate Sinfield
School Board Representative

To be confirmed
ICT Representative

FAMILY AND COMMUNITY ENGAGEMENT



Webinars for parents and carers

Join one of our free webinars for parents and carers.

These live webinars give parents and carers the knowledge, skills and tools to support their children to have safe online experiences.

Our 2022 webinars include a broad range of topics that will be delivered by our expert education and training team.



<https://www.esafety.gov.au/parents/webinars>

Career planning for students on the autism spectrum - a webinar for parents and carers | Wednesday 9 March | 4.00pm (AEDT)

For 20 years, myfuture has been a trusted source of career information within the Australian education community providing content that is practical, targeted and developed by experts. As well as supporting students, teachers and career practitioners, myfuture provides tools and resources to help parents and carers support their child's career exploration, engage them in career conversations, and raise awareness of post-school options.

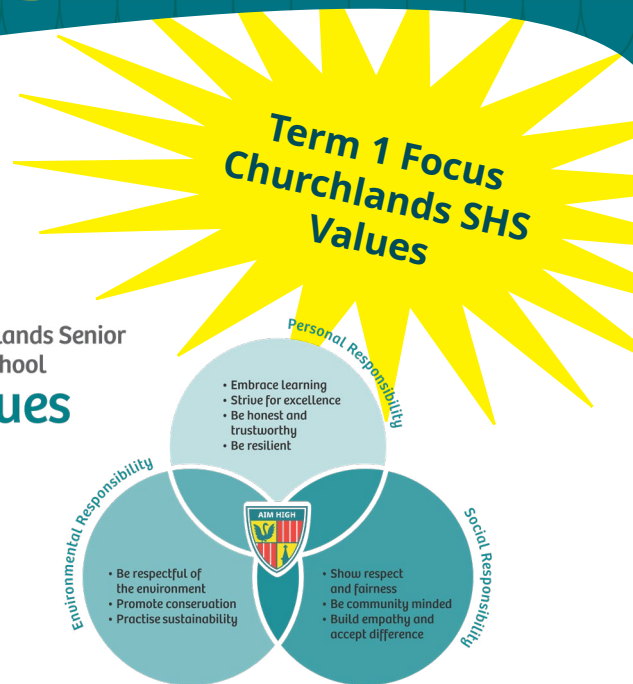
In this Insights webinar, Associate Professor Marina Ciccarelli from Curtin University, and Cheryl Mangan from Autism CRC will provide information about the myWAY Employability evidence-based resources available to assist young people on the autism spectrum in transition planning, to build their employability, and maximise their potential.

Join us as the team from myWAY Employability discuss such topics as:

- Starting challenging conversations about the future
- Identifying personal strengths, interests, and sensory preferences to guide career exploration and work experiences
- Providing a just right challenge
- Building self-determination.

Register now for this free event: <https://attendee.gotowebinar.com/register/1366920972620471309>

Churchlands Senior High School values



SOCIAL RESPONSIBILITY

At Churchlands Senior High School we show Social Responsibility by

BEING PUNCTUAL

on time for class



SHOWING RESPECT



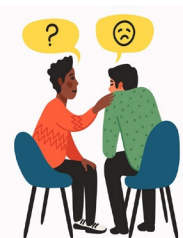
BEING AN ACTIVE LISTENER



CARING FOR OTHERS



SHOWING EMPATHY



ACCEPTING DIFFERENCE





CHURCHLANDS
SENIOR HIGH SCHOOL

COVID-19 PARENT INFORMATION

School-based close contact in a high caseload environment

Testing and isolation advice for schools

Close contact definitions in schools

Face-to-face

At least 15 minutes face-to-face contact where a mask was not worn by the exposed person and the person with COVID-19.

Small indoor space/classroom/no mask

Greater than two hours within a small indoor space or classroom environment, where masks have been removed for this period by the exposed person and the person with COVID-19 (note: others wearing masks in this scenario would not be a contact).

Advised by WA Health

Someone who is directed by WA Health that they are a close contact.

Confirmed positive case

Notify your school and isolate for a minimum of 7 days.

- At Day 7, if symptoms are present remain in isolation until symptoms clear.
- If no symptoms after Day 7, leave isolation and no testing is required.



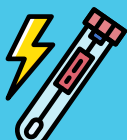
Symptomatic close contact

Notify your school, isolate for 7 days from date of contact with positive case, and:

Take a PCR or RAT test as soon as symptoms develop:

- If positive, refer to **Confirmed positive case**. You must report your positive RAT.*
- If negative stay in isolation, and if you used a RAT, take a second RAT in 24 hours and remain in isolation.
 - If then positive, refer to **Confirmed positive case**. You must report your positive RAT.*
 - If negative and no new household members have tested positive – take a RAT again on Day 7, before ending isolation if a negative result is returned.

***Report your positive RAT to WA Health at**
www.healthywa.wa.gov.au/ratregister



Asymptomatic close contact

Notify your school, isolate for 7 days from date of contact with positive case:

- If symptoms develop, refer to **Symptomatic close contact**.
- If still asymptomatic, take a RAT on Day 7.
 - If positive, refer to **Confirmed positive case**. You must report your positive RAT.*
 - If negative, and no new household members have tested positive – self-isolation ends after Day 7, and people should monitor for symptoms.

Symptomatic (not a close contact)

Get a PCR test immediately and isolate until the result is returned:

- If positive, refer to **Confirmed positive case**.
- If negative, not required to isolate but should stay home where possible until symptoms clear.

If you take a RAT because a PCR test is unavailable:

- If positive, refer to **Confirmed positive case**. You must report your positive RAT.*
- If negative, continue to isolate and repeat RAT in 24 hours – if negative after this follow-up test, you are not required to isolate but should stay home until symptoms clear.

FAMILY AND COMMUNITY ENGAGEMENT



WEMBLEY DOWNS SC ARE LOOKING FOR PLAYERS FOR AN ALL GIRLS TEAM

IF YOU ARE TURNING 13 OR 14 THIS YEAR, THEN WE NEED YOU!

DISCOUNTS ARE ON OFFER FOR THE 2022 SEASON.

TRAINING SESSIONS COMMENCES MARCH WITH SEASON STARTING MAY 1ST.

FOR MORE DETAILS,

EMAIL editorial2@eyersrocket.com.au

OR CALL SCOTT ON 0403 344 143

