



CHURCHLANDS
SENIOR HIGH SCHOOL

PARENT INFORMATION EVENING

BRING YOUR OWN DEVICE (BYOD) PROGRAM

2019 - 2020

WELCOME

- Mr Chris Van Maanen– Associate Principal
- Mr Shaq Herath – ICT Manager
- Mr John Agostinelli – Teacher and the former ICT Director
- Brian Hawkins – Stott + Hoare



CHURCHLANDS
SENIOR HIGH SCHOOL



AGENDA

- Our BYOD program history.
- All students required to bring a laptop but why ?
- How do we use our laptop and Learning Tools
- Full service model for laptops vs On your own model (Please see minimum specifications)
- Policies
- Demo and Teaching Pedagogy – John Agostinelli
- Stott & Hoare Laptop Presentation – Brian Hawkins
- FAQ and Close – Shaq and Brian

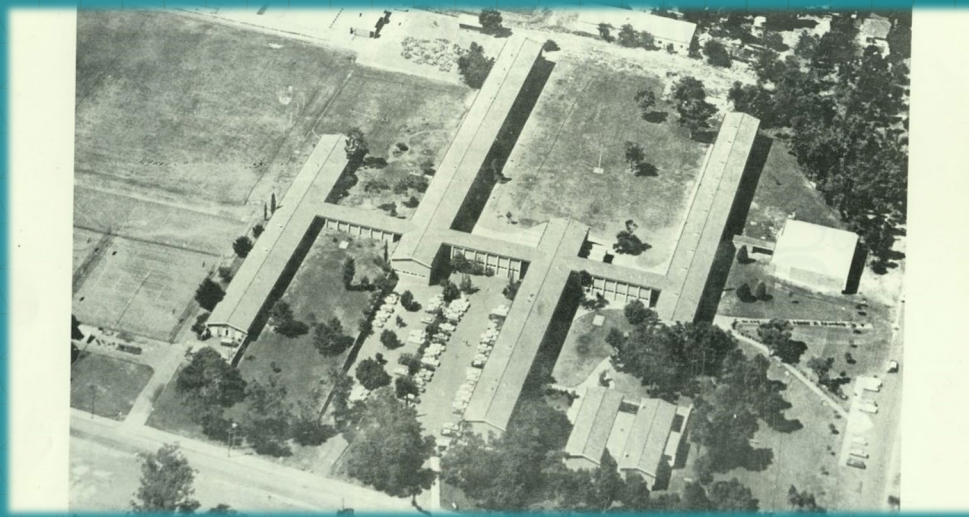


CHURCHLANDS
SENIOR HIGH SCHOOL

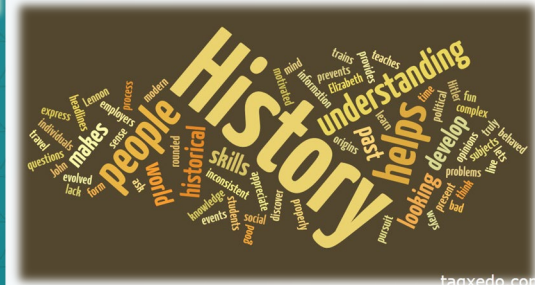
On the
Agenda

HISTORY

- 1:1 laptop program for 10 years
- BYOD program for 6 years
- School has roughly 3000+ students approximately
- 300+ staff members
- Manages 6000 devices roughly
- Secure internet browsing within the school
- Student monitoring capabilities
- Microsoft software is deeply integrated in our school since 1997
- Leading innovative public school



CHURCHLANDS
SENIOR HIGH SCHOOL



WHY DO WE NEED A LAPTOP

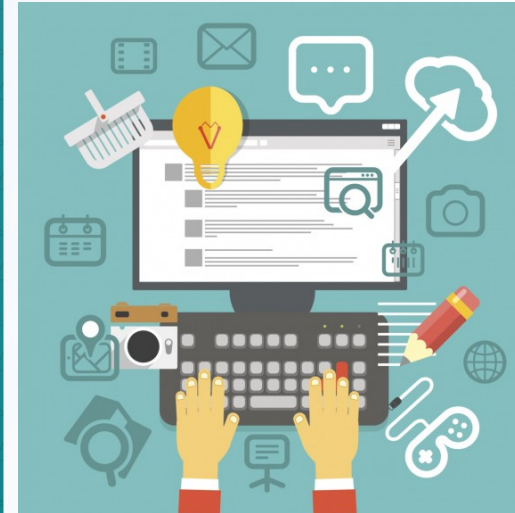
- Laptop vs tablet
- New and emerging education trends touch, pen, VR and AR



- Create content, consume content, present and investigate content
- Online testing such as NAPLAN/NAP-SL, OLNA, etc online
- Evaluating and enhancing learning and support for students, teachers and parents.



CHURCHLANDS
SENIOR HIGH SCHOOL



HOW DO WE USE OUR LAPTOPS

Learning Tools

- Office 365 – EMAIL/CALENDER | OneDrive | OneNote | Teams
- OneNote is Essentials to almost all subjects.
- SEQTA – Parents | Students
 - Seqta Notices, Dashboard for utilities, password management via identity and the progress.

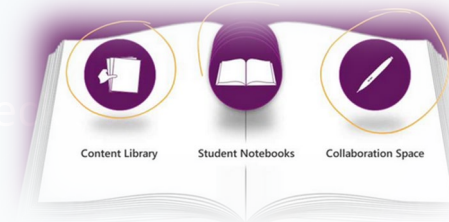


- Teaching pedagogy (Dr Tan)
- Cyber Smarts
- Duty of care

empower kids educate
Cybersmart
digital-citizenship



CHURCHLANDS
SENIOR HIGH SCHOOL



STUDENT INDUCTION AND ASSISTANCE

☐ All students will get ICT assistance

- Username + password,
- connection to the Wi-Fi,
- installation of CyberHound certificate for internet filtering

☐ Cyber smarts Induction

☐ General ICT Induction (during camp week)

☐ Applications and resources induction

- SEQTA, Library resources, Study skills, email, OneDrive, Office 365, OneNote, Class notebook, other resources.



CHURCHLANDS
SENIOR HIGH SCHOOL

LAPTOP MODELS AND PROGRAMS

- Full-Service Model via Stott & Hoare
 - Brian Hawkins from S&H will have more of a discussion about what is on Offer and the benefits
 - The school has partnered with S&H for the last 7 years and they have provided outstanding service to our parents and students.
 - **Please add the device to your home and content Insurance policy !!!**
 - **Or Purchase Accidental Damage Protection!!**
- On your own model via any vendor as long as the device meets minimum specs.
 - Meet the Hardware and Software Specifications
 - **Please add the device to your home and content Insurance policy !!!**



CHURCHLANDS
SENIOR HIGH SCHOOL

LAPTOP MODELS

Ordering Information

- You might require your student key to order from Stott Hoare.

This is the first part of your student email (before the @).

You will find this information in your enrolment package.

- Stott and Hoare Ordering Portal

<https://www.churchlands.wa.edu.au/learning/ict/parent-owned-laptop-program/full-service-model>

- Password: Churchlands

	Lenovo ThinkPad 11e Yoga	Lenovo ThinkPad L390 Yoga	Lenovo ThinkPad X390 Yoga
Specifications	 <p>Intel® Celeron N4100 Processor 11.6" HD Screen (1366x768) 8GB RAM 256GB SSD 720p Webcam + World Facing Camera 45W AC Adapter Dual Band Intel Wireless AC Bluetooth Windows® 10</p>	 <p>Intel® Core i3-8145U 13.3" FHD Screen (1920x1080) 8GB RAM 256GB SSD 720p Webcam + World Facing Camera 45W AC Adapter Dual Band Intel Wireless AC Bluetooth Windows® 10</p>	 <p>Intel® Core i5-8265U 13.3" FHD Screen (1920x1080) 8GB RAM 256GB SSD 720p Webcam</p>
			<p>65W RapidCharge Dual Band Intel Wireless AC Bluetooth Windows® 10</p>
Ports	HDMI 1 x USB-C 2 x USB 3.1 Combo audio/mic jack 4-in-1 Card Reader RJ-45 Ethernet	HDMI 2 x USB 3.1 2 x USB 3.1 Type-C Combo audio/mic jack MicroSD slot Mini RJ-45 Ethernet	1 x Thunderbolt 3 HDMI 2 x USB 3.1 1 x USB Type-C Combo audio/mic jack MicroSD slot Mini RJ-45 Ethernet
Touchscreen	Yes	Yes	Yes
Pen Included	Yes	Yes	Yes
Weight (Starting)	1.54 kg	1.56 kg	1.29 kg
Estimated Battery Life	Up to 12 Hours (Depending on use and settings - actual battery life will vary)	Up to 13.6 Hours (Depending on use and settings - actual battery life will vary)	Up to 14.5 Hours (Depending on use and settings - actual battery life will vary)
Warranty	3 Year	3 Year	3 Year
Productivity tools	Office 365 Activated	Office 365 Activated	Office 365 Activated
Anti Virus	3 Year Trend AV protection	3 Year Trend AV protection	3 Year Trend AV protection
Configuration	Set-up and software install	Set-up and software install	Set-up and software install
Support	Pick-up and Drop-off from school	Pick-up and Drop-off from school	Pick-up and Drop-off from school
Delivery	Delivered to school	Delivered to school	Delivered to school
Bundle Price for Parents (Inc GST)	\$1,149.00	\$1,479.00	\$1,949.00
Spec Upgrades	None	Upgrade to i5 Processor \$100	Upgrade to i7 Processor \$150



CHURCHLANDS
SENIOR HIGH SCHOOL

2019 ON YOUR OWN

- **Windows 10 (x64)** Operating system.
- **Office 2016 or above – Free from school O365 platform**
- **5 Ghz Wi-Fi**
- **At least 6 hours of battery life** at moderate utilisation
- A “corporate” grade Anti-virus eg McAfee, Symantec, Trend etc.
- Units must have a physically connected “full” keyboard so students can be productive in class.
- Hardware Requirements :
<https://www.churchlands.wa.edu.au/assets/documents/Laptop-Minimum-Hardware-Requirements.pdf>
- Software Requirements :
<https://www.churchlands.wa.edu.au/assets/documents/Laptop-Software-Installation-14-Oct.pdf>

More details on the school website

<https://www.churchlands.wa.edu.au/my-churchlands/ict>



CHURCHLANDS
SENIOR HIGH SCHOOL

2019 AND BEYOND

Keep investigating and evaluating options that enhance learning and support

- Students
- Teachers
- School staff
- Parents

This will be an evolving landscape



CHURCHLANDS
SENIOR HIGH SCHOOL

POLICIES

- **Acceptable Use -** <https://www.churchlands.wa.edu.au/assets/documents/ICT-Acceptable-Use-Policy-July-2019.pdf>
- **DoE Student Online policy -** <http://det.wa.edu.au/policies/detcms/policy-planning-and-accountability/policies-framework/policies/students-online-in-public-schools-policy.en?cat-id=3457966>

“Utilise the technology in a responsible and sensible manner at school and at home”



CHURCHLANDS
SENIOR HIGH SCHOOL

WHAT YOU ARE AGREEING TO :

- Bringing the laptop fully charged to school every day. Chargers should be left at home.
- Ensuring they have a school locker and use the locker for safe storage of the laptop when not in use.

(E.g. No devices should be taken to Physical Education classes)

- Adhering to Department of Education Students Online policy.
- Adhering to Churchlands Senior High School Acceptable Use Policy both at school and at home.
- Ensuring the device is used appropriately in an educational setting.
- Making sure the required school software is correctly installed and not tampered with.
- Taking “reasonable care” of the device to reduce the risk of damage or loss. Students must not remove any stickers or decals from their devices as this may void licensing agreements.
- Ensuring any additional software does not interfere with the operation of the school software.
- Backing up all data regularly. Students must be aware that the contents of the device may be deleted, and the hard drive reformatted in the course of repairs.
- Ensure all patches and updates are installed when requested. This includes the latest anti-virus definitions.
- Ensuring they are the only person to log into their device.



CHURCHLANDS
SENIOR HIGH SCHOOL

LEARNING CULTURE AT CSHS

I will now handover to Mr. Agostinelli to speak about Churchlands learning culture.



CHURCHLANDS
SENIOR HIGH SCHOOL

PARENTS FAQ



CHURCHLANDS
SENIOR HIGH SCHOOL



PARENTS FAQ - COMMON ONES

- **How does ICT assist my child if he/she is having computer issues?**

All students are welcome to attend the ICT office before school, recess, lunch or after school with any issues/questions they may have relating to their computer, school username/password etc. We will try to resolve their issue and if it is not resolved, the student will get a note in their diary explaining the next recommended step.

- **My child's laptop needs to be repaired**

If a student's laptop is damaged or defective, you will need to contact the vendor/place of purchase or a computer repair company of your choice. If you purchased the laptop via Stott Hoare please contact them directly. Students can borrow a computer from the daily loan fleet available from the library if they are without their computer. Please contact ICT by filling out the ICT Contact Form on this page if you require more information.

- **Do I need to purchase Microsoft Office for my child's laptop?**

No. As a student at Churchlands, your child has an automatic O365 subscription which gives students access to these services. Please be aware that whilst this provides students with the latest and most up to date versions of the office suite, once the student has finished their education at Churchlands, the license is revoked and the products will no longer work. If you have previously purchased your own license for the office suite, we encourage you to keep all keycodes and licensing information so you can reinstall it at a later date, should this be the case.

- **My child lost his/her laptop whilst at school**

Please have the student contact their respective Student Services.

- **My child has been asked to reimage by a member of ICT**

This simply means that your child's laptop is experiencing issues that may be resolved with a fresh re installation of the Windows operating system. We always recommend that students backup their work if they have any saved locally on their computer before sending it for a reimage. This is normally something that is only recommended to Stott Hoare customers.

- **Can my child use an Apple MAC at the school**

Yes. Churchlands is a Windows school, however students can bring Apple laptops to the school. They will however receive a more limited level of support from staff if they can't get their device to function within the Churchlands environment.



CHURCHLANDS
SENIOR HIGH SCHOOL



STUDENTS FAQ

- **How do I connect to the School Wifi**
Click [here](#) for instructions.
- **I'm having issues connecting to the School Wifi**
If you have restarted your computer and you still can't connect to the School wifi, please come to the ICT office for assistance.
- **When can I get help from ICT and where is the office?**
ICT are happy to assist you before school, recess, lunch and after school. Under no circumstances (including a note from your teacher) can we assist you during class time unless you are accompanied by a staff member. The ICT office is located on the ground level next to the stairs between the Library and Maths block. [Access school map here.](#)
- **What can ICT assist me with?**
ICT are able to assist you with your username and password, WiFi connectivity and some general computer troubleshooting.
- **Can I use an Apple computer at the school?**
Yes you can however ICT are only able to offer limited support with Apple products (as Churchlands is a windows school) and if you have issues connecting to the Churchlands network or accessing work on your Apple laptop, you may be on your own.
- **Can I connect my personal phone to the School Wifi?**
No. This is a breach of our acceptable use policy and can result in a ban from the school network.
- **How do I install the NAPLAN browser?**
Information on installing the NAPLAN browser can be found [here](#).
- **Why do I need a corporate grade antivirus?**
The school is a large ICT environment, and would generally be viewed as a large corporate entity for ICT. For this reason, a corporate grade anti virus is important to ensure your child's laptops are as safe as possible.
- **What is Lanschool?**
Lanschool is a program adopted by the school in 2018 as a means of teachers being able to see a students computer screen in real time. This assists staff in making sure students stay on track in the classroom. This software only activates when logged into the school WiFi. Screens are not visible after school hours. It is at the parents/guardians discretion to opt out of Lanschool if they do not wish it to be installed on their child's laptop.



CHURCHLANDS
SENIOR HIGH SCHOOL



LAPTOP MAINTENANCE TIPS

There are some important things you can do to ensure your laptop runs well whilst at School

- Restart your laptop at least once a week & using the correct method. The correct way to restart in W10, when logged into the computer, click on the Windows icon, then the power icon and select restart. (Closing the lid of the laptop or pressing on the power button will not restart the laptop correctly)
- Charge your laptop overnight or as required
- Run Windows updates & Model specific (example Lenovo, HP etc..) driver updates
- Have a minimal amount of software installed (only install what is needed)
- Have minimal web browser tabs open when at school • Have minimal applications open at one time when at school
- Refrain from installing software that claims to boost your laptops performance unless recommended by an IT professional
- Monitor the software installed on your laptop at all times (If there is a program you do not recognize and it is not part of the standard WINDOWS 10 environment, check with an IT professional.)
- Only have the necessary programs running on startup
- Run virus checks regularly
- Keep the laptop centred on your desk when in class & not close to the edge of the desk if possible
- Use built in Windows features such as power saver and screen dimming to conserve battery
- Don't carry your laptop around by the screen. Have it folded when transporting it at all times & in a robust case
- Keep your laptop out of dusty environments & areas with extreme temperature conditions
- Take care when plugging in drives like USB drives and power supplies ICT recommend all student have a protective carry case for their laptop and students



CHURCHLANDS
SENIOR HIGH SCHOOL



THANK YOU



CHURCHLANDS
SENIOR HIGH SCHOOL