

“Back to School”

Booklet 2025



THIS BOOKLET INCLUDES

- Books and stationery information
- Information on Secondary Assistance Scheme
- School policy on contribution and charges
- List of optional costs and voluntary approved requests
- Music student charges
- Excursion cost estimates
- Incentive scheme
- Saver Plus information

Dear Parents / Guardians,

As we prepare for the upcoming 2025 school year, we would like to bring your attention to several important matters.

- ❖ The 2025 School Year Contributions and Charges have been emailed to you.
- ❖ The 2025 Booklist is available on the school website – Only purchase items listed for subjects on your Contributions and Charges sheet. If a subject does not appear on the booklist, you do not need to buy anything for that subject. (Preferred supplier is Champion – however you may choose to use another supplier.)
- ❖ 'Back to School' Booklet 2025 outlines essential details:
 - School policy on contributions and charges
 - Secondary Assistance Scheme (SAS) information
 - Uniform shop opening times
 - Books/Stationery and sustainable school shop platform for second hand books and uniforms
 - Details of optional costs and voluntary requests
 - Music student charges
 - Excursion cost estimates
 - Saver Plus information
 - Incentive Scheme

CONTENTS

	PAGE
School and Uniform Contact Information	2
Saver Plus Information	3
Books and Stationary Order	4
Campion Ordering Process	5
Office Hours and Payment Options	7
School Policy on Contribution and Charges	8
Information on Optional and Voluntary Requests	10
Music School Charges	12
Excursion and Tour Charges (Estimates)	13
Secondary Assistance Scheme Information	14
Contribution Charges Incentive Scheme	16

CONTACT

Churchlands Senior High School

20 Lucca Street
CHURCHLANDS WA 6018
T: 9441 1700
F: 9441 1701
E: enquiries@churchlands.wa.edu.au

Uniform Shop Manager

T: 9441 0402
Email: uniformshop@churchlandspc.com.au
Website: <https://shop.churchlandspc.com.au/>

Weekday Trading Hours

Tuesday 8.30am to 4.00pm
Thursday 12.30pm to 5.00pm

Monday 9 December 8.30am to 4.00pm
Closed Tuesday - Friday 10-13 December 2024



2025 Special School Holidays Trading Hours

- Saturday 1 February 9.00am to 1.00pm
- Monday 3 February 9.00am to 1.00pm
- Tuesday 4 February 12.00pm to 5.00pm
- Wednesday 5 February 8.30am to 4.00pm (*first day of school*)
- Thursday 6 February 12.30 pm to 5.00pm

Regular trading hours will resume Tuesday 11 February 2025

You can double your savings. If you reach your savings goal each month for 10 months, **ANZ will match it up to \$500.**

What can the \$500 be spent on?



Laptops and tablets



Uniforms and shoes



Vocational education



Lessons and activities



Books and supplies



Camps and excursions

To join Saver Plus



Be 18 years or older



Have a Health Care or Pensioner Card



Have a child in school, starting school next year, or be studying yourself



Get a regular income (you or your partner)



Agree to join in free online financial education workshops

BOOKS & STATIONERY

Please refer to your Voluntary Contribution & Charges Sheet and purchase only those items listed against subjects your child is enrolled in.

All orders for stationery and textbooks can be made by logging on to the Campion Education website

www.campion.com.au

(see code on the front cover of booklist for access)

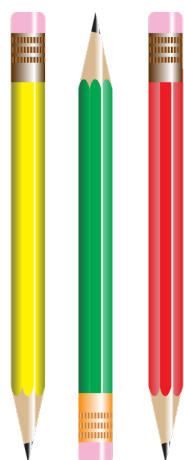
Before Friday, 20 December 2024

(Stocks cannot be guaranteed for late orders)

Or

Mail your Completed Order List to Campion
on or before Friday, 20 December 2024

**Home Delivery Date/Fee: No later than Tuesday, 28 January 2025
for an \$8.00 fee**



Or

Visit their Malaga Store
751 Marshall Road
MALAGA WA 6090



SUSTAINABLE SCHOOL SHOP PLATFORM

Second-hand Books & Uniforms

www.sustainableschoolshop.com.au / Contact: 0438 743 444

- Register on Sustainable School Shop website
- List your items for sale
- List wanted ads for those items you are looking to buy
- Buyers contact sellers and arrange where and when to trade

Churchlands P&C have paid for a School Subscription to assist our school community. All families have full access to the service without incurring any fees.

HOW TO ORDER YOUR RESOURCES FOR Churchlands Senior High School

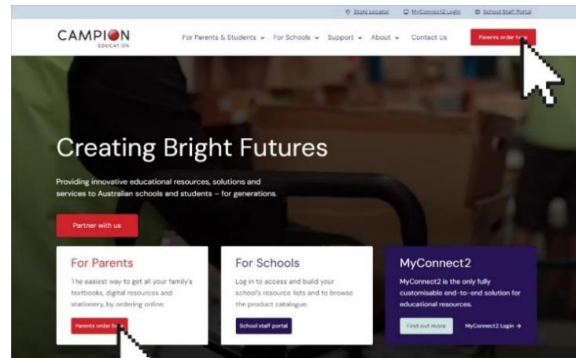
Order online by your school's due date to save time, hassle and cost.

Orders placed by your school's due date get the first choice of availability, best available Postage and Packing costs, and are delivered before the start of school.

If you miss your school's due date, you can still order! We can't always guarantee stock availability for orders placed after the due date, and P&P costs may be higher.

You can also visit your local Campion retail service centre! (store details below)

- 1 **Head to www.campion.com.au**
Tap 'Parents order here'
- 2 Enter your email or mobile and we'll send you a verification code. When you get the 6-digit code, enter it and you're in!
- 3 Tap on '**Order Now**' when you're ready to place an order. Then match your student using either their school email address or school name
- 4 If you don't have your student's school email address, that's OK!
You can search for the school by name and then use your student's name and Resource List Code to bring up their list. **The Resource List Code for Churchlands Senior High School is: PWMW**
- 5 Now follow the prompts to select the year level for your student
- 6 Select the resources you need by expanding subjects and adding items
- 7 Select your delivery method:
 - **Home Delivery – order by 20 December 2024** for delivery to your nominated address before start of school (pending supplier availability).
 - **Standard Delivery** – orders made online after 20 December 2024 will be at an increased delivery cost and delivered to your home or nominated address within 5-7 business days of the order being placed.
- 8 Complete your details, check the summary, and submit your payment. **And you're done!**

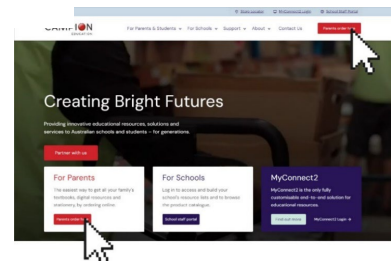


You can also shop at your local Campion store: 751 Marshall Rd, Malaga

MAKE SURE YOU GET THE CORRECT SCHOOL RESOURCES

This school has partnered with Campion Education for textbooks, digital resources and stationery.
Order online by the due date to save time, hassle and cost.

Head to www.campion.com.au and click 'Parents order here', or use the QR code to jump straight in:



ADMINISTRATION OFFICE

The Manager – Corporate Services and Office Staff will be in attendance to receive school contributions & charges, complete applications for secondary assistance and help with general enquiries. After these two days payment can be made during normal working hours at the office.

Wednesday, 22 January 2025
Thursday, 23 January 2025

8.00am to 4.00pm
8.00am to 4.00pm

2025 SCHOOL CONTRIBUTIONS & CHARGES

Online Payment from 15 JANUARY 2025 onwards
via Churchlands website FINANCE Section
(Please do not pay before this date)

PAYMENTS OPTIONS

We also accept payment by **Cash**, or **Debit Card (EFTPOS)** in person or by **Credit Card (Visa/Mastercard)** over the phone.



Qkr! CLOSING 13 DECEMBER 2024



BANKWEST ACCOUNT CLOSED!

SCHOOL POLICY

CONTRIBUTIONS AND CHARGES

The Legal Position

In the public school system the State Government through the Department of Education and Training provides placement at educational facilities for all students who choose to attend Government schools.

The Department also pays for the wages of all teaching and non-teaching positions plus costs such as repairs, maintenance and utilities. Government does not provide for many goods and services which students use and it is reasonable for parents to meet these costs.

Where do Contributions and Charges go?

Some examples include:

Ingredients in home economics, transport, photographic equipment and supplies, art materials, timber, metals, and consumable tools, external instructors, sporting equipment, text book, software, licences etc.

How much can be charged?

For Years 7, 8, 9 and 10 the maximum voluntary contributions a school may charge is currently fixed at \$235, however additional compulsory charges above that figure can be requested for consumables and additional resources.

For Years 11 and 12 there are no maximum charges set by the State Government. Schools endeavour to set their own charges for these years and such charges are compulsory. The school can also request a 50% confirmation charge for these years.

Who should pay?

Given that all students benefit from the pool of collected contributions and charges, it is fair to expect that all parents should pay the contributions and charges. Parents who choose the more expensive option subjects need to meet the costs as provided during the subject selection process. All would agree that it is unfair for those parents who meet their financial commitments to be seen to subsidise the education of those students whose parents choose not to pay their contributions and charges. This school is committed to an even-handed and responsible approach that all parents should make contributions towards their children's education.



A compassionate view

This school is only too aware that the payment of school contributions and charges can be a burden for some families. Part payments, deferred payments, credit card debits are all available to support parents experiencing difficulties. In some cases of financial hardship the Principal will consider full or partial waiver of fees, however we do need to talk to parents about this. Ignoring accounts and reminders is unhelpful to all parties. The school is also keen to assist parents in selecting options that they can afford. To this end subject charges will always be provided to parents prior to selection of subjects.

If parents are having difficulty paying fees, please contact our Manager – Corporate Services, Arlene Thomas to discuss possible payment options.

Payment options

The school makes provision for the following payment options:

- Paperly (preferred option)
- Full payment by cash or credit card
- Payments by instalments - cash or credit card

Collecting Contributions and Charges

The school will take a positive approach to collecting contributions from parents of Years 7 to 10. In particular, the school will highlight the benefits to students if all parents meet their contributions. With respect to charges for Years 7 to 12 the school will actively seek full payment of charges.

School Board, in support of this process, has endorsed the following actions:

- Regular accounts sent home to parents.
- Parents who refuse to communicate with the school and have made no effort to pay fees will be referred to our debt collection agency as permitted in the regulations.
- Students whose family has a history of non-payment will be refused enrolment in high cost subjects.
- Year 11 and 12 high cost subjects may require a 50% confirmation charge prior to enrolment.
- Sanctions on extra curricula activities may be imposed at the discretion of the Principal.
- This could include camps, school socials and sporting activities.

OPTIONAL COSTS

School Yearbook – Payment through Paperly – Online Shop

Years 7 – 11

This much valued publication is produced each year in colour and contains photos and articles of the activities that have taken place during the year at school. Year group, year activities, overseas tours, sporting achievements, school production and ball photos are included.

A **Year 12** edition is produced which contains staff and student awards and profiles of contributing Year 12 students at no extra cost. If you intend purchasing a Yearbook for your Year 12 Student, please order it against your Yr 12 student or they may miss out on this edition.

VOLUNTARY REQUESTS

Carnivals (Years 7-10 \$10; Years 11-12 \$5.00)

All students participate in 5 carnivals and selected students participate in 2 other carnivals over a school year. There are also several carnivals during the year that are not whole year groups. Besides the 3 school buses that are used, we are required to bus students to the venue and in some instances need to pay an entry fee. Whilst the school covers the majority of costs, we depend on parents to contribute towards this very valuable opportunity for students to support each other at such events.

Chaplains (\$10)

The Chaplains support the social, emotional, and non-denominational spiritual wellbeing of the school community whilst embodying the CSHS values of personal, social and environmental responsibility. Their primary focus is to ensure everyone is provided an opportunity to maximise their potential.

Our Chaplains offer confidential, non-judgmental and evidence based pastoral care programs with the intention of empowering every member of our community to be the best person they can be and to contribute to the wellbeing of self and others. They are trained in pastoral care, with ongoing professional learning opportunities provided to specialize in critical incidences, community members living in isolation and mental health initiatives.

Swimming Pool (\$15)

Students at CSHS have access to an in-house swimming pool. All students participate in a Swimming Program for 50-60 hours per year and the Swimming Carnival. We have an arrangement with Royal Lifesaving WA who provide excellent coaching services for our students. Churchlands boasts of a winning record at inter school swimming carnivals. Parent payments to this request are used to pay to keep the pool clean and safe for students to swim in.

Library (\$30)

Churchlands Library is a vibrant and engaging space for all students to enjoy. Reading helps our students develop empathy and resilience skills as well as assisting with overall wellness. Our library has a great range of novels, fact books, magazines, Ebooks and audio books as well as graphic novels for our students.

Online resources such as digital encyclopedias, website subscriptions, digital media and newspapers assist students with researching. Providing colouring, makerspace activities, jigsaws, and chess for your child to enjoy during breaktimes is also a priority. Your contribution makes this possible.



Students Need School Libraries

P&C Contribution (\$70)

The role of the Parents and Citizens' Association (P&C) is vital in supporting the school community by providing necessary resources, facilities, and amenities that enhance the educational environment for students. P&C contributions directly fund a range of initiatives aimed at improving student well-being, academic opportunities, and school infrastructure. These

contributions have provided items such as solar panels, air conditioning units, students lockers, sensory equipment, football nets, musical instruments, House awards and computer equipment. Funds from the P&C have also covered the cost of incursions, workshops and camps, and supported the YouthCARE Chaplaincy Program. The P&C remains responsive to the needs of teachers and students, ready to fund projects that enrich the school experience and foster a positive learning environment. Future initiatives will continue to support student welfare through various programs in all departments, as well as investing in improvements to the school grounds.



CHURCHLANDS
SENIOR HIGH SCHOOL

**Parents &
Citizens
Association
Incorporated**

Technology (\$100.00)

The State Government provides funding for each student. The salaries for one full time Network Manager and five full time IT Support Officers costing over 500 000 dollars comes out of the funding provided by the State Government. The annual costs for maintaining a safe, reliable and robust learning environment is paid for by the school. Your contribution to this would ensure that we are able to provide the latest technology for our students and parents (more access to your student's progress/records online).

Churchlands SHS Building Fund

Under the Income Tax Assessment Act, schools are allowed to set up a tax-deductible School Building Fund. The money from this fund can be used for construction, renovation and extension of school buildings. Donations to this fund are voluntary and are used to replace floor coverings, seating, painting etc. To undertake such refurbishments is costly. Your contribution to this fund will help ensure that your students learn in a bright, clean environment.

Music Student Charges



Ensemble Charge - \$40

All music students must pay an ensemble charge of \$40 per year to cover the cost of choral accompaniment and the purchase of scores for the instrumental and choral ensembles. Please note this charge only is included in your fee sheet. The remaining charges listed below are in addition to your school contributions and charges.

Instrumental Hire Charge - \$150

Instrumental students hiring an instrument through the school must pay \$150 to cover the costs for maintenance and repair to the instrument.

This is payable **ONLY** by students hiring an instrument through the school.

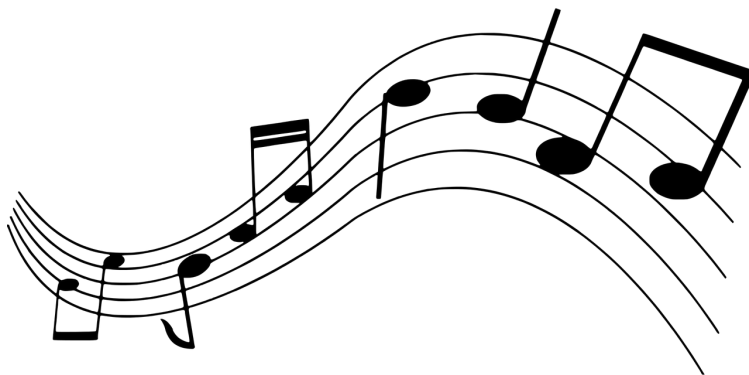
Please note: Instruments will be given to the student once payment has been received.

Vocal Charge - \$25

\$25 is payable for ALL Voice students to cover photocopying and purchase of repertoire.

Percussion Charge - \$25

Percussion students must pay \$25 to contribute towards repair and upkeep of instruments.



2025 Excursion Cost Estimates

(based on 2024 figures)

In facilitating the collection of funds for excursions, camps, and tours, the school adheres to precise timelines, providing parents with ample opportunities to make payments. To ensure your child's participation, it is crucial to submit payments before the specified deadlines. All parents/guardians are urged to strictly adhere to these timelines, as starting in 2024, no extensions will be made.

YR12 ATAR Program for English and Literature	\$45.00	YR8-12 STEM Pedal Prix Round 2	\$65.00
ATAR Designated Works Concert	\$20.00	YR8-12 STEM Pedal Prix Round 3	\$115.00
Production Shirts	\$20.00	YR9 End of Year Activity Day	\$31.00
Churchlands SHS Surfing Competition	\$10.00	YR9-12 High Schools Cup Netball Comp	\$15.00
English Reading Plus	\$14.00	YR9-12 Pedal Prix Murray Bridge SA	\$20.00
Human Biology Harry Perkins excursion	\$66.60	2025 Japan Tour - 2nd Payment	TBA
Japan Tour Final Payment	\$3,525.00	2025 Year 10 AEP HASS CIVICS Tour Deposit	TBA
Maths E Resources	\$22.00	2025 Year 7 Day Camp	TBA
Tree planting at Gingin excursion	\$9.00	2025 YR8 Coral Bay Camp	\$1,300.00
VET White Card Training	\$70.00	2025 YR8 Coral Bay Camp Insurance	\$25.00
Y10 River Cruise Reward Day	\$74.00	CSHS Custom AFL Football	\$10.00
Y7 and Y8 Bounce	\$51.00	Football Jumper	\$47.00
Y7 and Y8 Karrinyup Movies and Games	\$51.00	Football Shorts	\$31.00
Y9 Outdoor Ed Camp Lancelin	\$80.00	Tree Planting in Brookton YR11-12	\$20.00
Year 11 ATAR Geography	\$55.00	Tree Planting in Brookton YR7-10	\$20.00
Year 11 Dinner Dance	\$115.00	Wicked Movie excursion	\$14.00
Year 11 Holocaust Institute of WA	\$15.00	Y 7 AEP Science AQWA	\$20.00
Year 11-12 Athletics Carnival	\$15.00	Y10 STEM Science & Engineering	\$20.00
Year 11-12 French Luncheon	\$16.50	Y10AEP Harry Perkins Course	\$270.00
Year 12 ATAR Geography	\$35.00	Y11 Breakfast Club	\$40.00
Year 12 Dinner Dance	\$110.00	Y7-12 Interschool Hockey - Girls	\$10.00
Year 9 Law Courts Excursion	\$25.00	Y8-10 STEM BinarX Curtin University	\$20.00
Year 9-10 Athletics Carnival	\$15.00	Y8-10 STEM BinarX Curtin University (2)	\$20.00
Year 9-10 Cadets Coral Bay Trip	\$734.00	Year 7 AEP Thriving Minds Symposium	\$50.00
Yr 12 School Ball \$140	\$140.00	Year Book Colour	\$30.00
Yr 8 - 12 Jazz Camp	\$130.00	Yirra Yaakin - Aboriginal Performance	\$13.20
YR10 Outdoor Education Camp to Dwellingup	\$88.00	YR 9 AEP Perth Hill Discovery Centre	\$28.00
YR11 &12 EALD Perth Festival	\$16.00	YR10 Coastal Processes	\$19.55
YR11 ESS Cottlesloe & Peppermint Grove	\$22.00	YR11 ATAR Biology Camp	\$150.00
YR11 Physics Day at Adventure World	\$54.00	YR11 ATAR Politics and Law Courts	\$33.30
YR12 ESS - Swan River Field Trip	\$21.00	YR11-12 Literature Black Swan Prodn	\$40.00
Yr12 French Luncheon	\$59.00	YR11-12 Trees for Survival Camp	\$68.25
YR7 The Jungle Book Puppet Show	\$8.90	YR12 Harry Perkins Biology Excursion	\$73.00
YR7-10 Interschool Water Polo	\$10.00	YR7-10 Trees for Survival Camp	\$68.25
YR7-8 AEP Literature Centre	\$110.00	YR7-12 Australian Mathematics Comp	\$8.50
YR8-12 STEM Pedal Prix Round 1	\$30.00	YR9-12 HS Cup Netball Elimination Comp	\$10.00



2025

SECONDARY ASSISTANCE SCHEME HOME EDUCATION

Applications close 11 April 2025

GENERAL INFORMATION

The Western Australian Government through the Department of Education provides an allowance to assist eligible families with secondary schooling costs.

Parents/guardians must apply for the Secondary Assistance Scheme (SAS) each school year (annually) – applications do not carry forward to future years.

To be eligible for the allowance the parent/guardian must hold a Services Australia (Centrelink) or Veterans' Affairs card that represents a statement of income for the family.

The allowance consists of two components:

- \$300 Clothing Allowance paid directly to the parent/guardian.
- \$235 Education Program Allowance paid directly to the parent/guardian.

Application is made by the parent or guardian for student/s registered for study in Years 7–12 and of Year 7–12 school age. The allowance is paid up to and including the year the student turns 18 years of age.

ELIGIBILITY CRITERIA

Parent or Guardian must hold one of the following cards:

- Centrelink Health Care Card
- Centrelink Pensioner Concession Card
- Veterans' Affairs Pensioner Concession Card

Please Note: The only Veterans' Affairs Card that meets the criteria is a blue card that is issued annually and expires in December each year. This card is income means tested.

The parent/guardian must be the holder of a card that is valid during first term. Claims cannot be made using a student's Centrelink card as this is not a statement of income for the family. The concession card must not be expired when applying for SAS.

The allowance is paid up to and including the year the student turns 18 years of age i.e. students born in 2006 or before are ineligible in 2025.

APPLICATION FORMS

Application forms are available from all Department of Education Regional Education offices.

Forms should not be altered and are to be completed during Term 1 only. Any forms submitted to Financial Planning and Resourcing Directorate prior to Term 1, 2025 will not be accepted.

Please ensure to keep a copy of the signed form for your records.

Personal information collected will only be used for the purpose of managing the SAS. The Department will not disclose your personal information for any other reason.

LATE APPLICATIONS

Late applications will only be accepted in extenuating circumstances and must be accompanied with a written explanation.

Eligible interstate or overseas students who are enrolled after first term may apply for the allowance. Date of enrolment must be noted on the application.

SUBMISSION OF APPLICATION

Submit your:

1. Completed application
2. Letter/certificate from your education regional office stating the student(s) are registered for Home Education for 2025 and
3. Copy of your concession card – front and back

The application is not complete and will not be accepted if any of the three (3) required documents are missing.

Email to: student.allowances@education.wa.edu.au

or

Post to: Financial Planning and Resourcing Directorate
Department of Education
151 Royal Street
EAST PERTH WA 6004

The witness declaration will be completed by the Department once all items are received.

Receipts for purchases of books, stationery and educational software must be retained and presented if requested.

PROCESSING OF PAYMENTS

If you change any of your details supplied on the application form, please notify us as soon as possible on 9264 4516.

We will endeavour to have all payments made to the parent/guardian by 30 May 2025.

FURTHER INFORMATION

Queries can be directed to the Allowances Coordinator
Telephone: (08) 9264 4516
Email: student.allowances@education.wa.edu.au



Department of Education

2025 SECONDARY ASSISTANCE SCHEME YEARS 7 - 12

\$300 Clothing Allowance Paid to parent or school
\$235 Education Program Allowance Paid to school

G

APPLICATIONS CLOSE

FRIDAY
11 APRIL 2025

- Valid to claim with Parent/Guardian card only. Student cannot claim with own card if living with parent(s)
Not eligible if student born in 2006 or before.
If living as an independent student, letter of proof from Centrelink must be provided.
Please retain a copy of the application form at the school
The Education Program Allowance (EPA) of \$235 for students will be paid to the school and will be applied towards education program charges in the first instance.

SCHOOL NAME SCHOOL CODE

CONCESSION CARD PARENT/GUARDIAN INFORMATION
LAST NAME - as per concession card FIRST NAME - as per concession card
STREET ADDRESS (EG: 15 Jones Road) SUBURB POSTCODE
CONTACT PHONE No. E-MAIL

CONCESSION CARD PARENT/GUARDIAN DETAILS

Centrelink Health Care Card (Family Card only NOT Student card)
Centrelink Pensioner Concession Card
Veterans' Affairs Pensioner Card (Blue card only - expires Dec 2025)
CARD No. (CRN OF PARENT/GUARDIAN):
CARD START DATE: CARD EXPIRY DATE:

STUDENT DETAILS (As listed on applicant concession card) INDEPENDENT STUDENT (Attach letter from Centrelink)
LAST NAME FIRST NAME DATE OF BIRTH YEAR LEVEL CLOTHING ALLOWANCE TO BE PAID TO (select)
SCHOOL PARENT
SCHOOL PARENT
SCHOOL PARENT

BANK ACCOUNT DETAILS OF PARENT/GUARDIAN (Complete only if clothing allowance to be paid to parent)
Payments will only be made by EFT - Please write clearly

Name of Account Holder(s):
BSB Number: (6 digits) Account Number: (up to 9 digits)

PARENT/GUARDIAN DECLARATION

I have not claimed this allowance for any of these children at another school in Western Australia in 2025.
I authorise Centrelink to verify my current benefit status and other pertinent details to gain this entitlement.

I DECLARE THE ABOVE TO BE TRUE AND CORRECT AND AM AWARE THAT IT IS AN OFFENCE TO PROVIDE FALSE OR MISLEADING INFORMATION.

PARENT/GUARDIAN SIGNATURE: DATE:
If you are completing this form electronically and are unable to sign this form please check this box to confirm the above information is true and correct.
If statements made in the application later prove to be false or misleading this application may be declined. Information supplied will be checked by the school.

SCHOOL WITNESS DECLARATION
(Concession card and application must be sighted and witnessed at attending school by a Department Officer)

I have sighted the claimant's card and confirm the details provided are correct.

PRINT NAME OF WITNESS WITNESS SIGNATURE POSITION HELD DATE

If the form is completed and dated prior to the start of Term 1 complete the commencement confirmation below (tick box and enter current date).
I confirm that the above student(s) has/have commenced at this school in Term 1, 2025 DATE:

Win...Win...Win...

Pay your amount listed on the bottom of your contribution and charges by **Friday, 11 April 2025** and go into a draw to win back your payment!

6 Winners
 One for each year level
 - Year 7 - Year 8
 - Year 9 - Year 10
 - Year 11 - Year 12



CHURCHLANDS SENIOR HIGH SCHOOL
 Contributions and Charges for Year Nine 2025

Student: _____

Subject Details	Voluntary Contributions	Charges	4 December 2024 Total
ENG9F 9 English S1	\$20.00	\$0.00	\$20.00
ENG9F 9 English S2	\$20.00	\$0.00	\$20.00
TFW9 9 Food Around The World	\$8.25	\$0.00	\$8.25
FRE9 9 French S1	\$9.00	\$100.00	\$109.00
FRE9 9 French S2	\$9.00	\$0.00	\$9.00
MGN9 9 General Music S1	\$9.00	\$0.00	\$9.00
MGN9 9 General Music S2	\$9.00	\$0.00	\$9.00
HE9 9 Health Education S1	\$0.00	\$62.50	\$62.50
HSS9F 9 Humanities and SS S1	\$4.00	\$0.00	\$4.00
HSS9F 9 Humanities and SS S2	\$4.00	\$0.00	\$4.00
MAT9C 9 Mathematics S1	\$20.00	\$0.00	\$20.00
MAT9C 9 Mathematics S2	\$20.00	\$0.00	\$20.00
PE9 9 Physical Education Girls S1	\$20.00	\$0.00	\$20.00
PE9 9 Physical Education Girls S2	\$20.00	\$0.00	\$20.00
SC9C 9 Science S1	\$8.00	\$0.00	\$8.00
SC9C 9 Science S2	\$20.00	\$0.00	\$20.00
SP9 9 Sports Science S2	\$8.25	\$0.00	\$8.25
Sub Totals	\$218.50	\$225.00	\$443.50
Voluntary Requests:			
Carnivals	\$10.00		
Chaplain	\$10.00		
Library	\$30.00		
Swimming Pool	\$15.00		
Technology	\$100.00		
P&C Contribution	\$70.00		
Total (Pay by Friday, 11 April 2025 to go into incentive draw)			\$678.50

The School is seeking voluntary donations from those who have the capacity to give to the School Building Fund which is Tax deductible

SCHOOL BUILDING FUND

04/12/2024 67850

\$100.00

\$200.00

\$500.00

Other _____