

“Back to School”

Booklet 2024



CHURCHLANDS
SENIOR HIGH SCHOOL

THIS BOOKLET INCLUDES

- Books and stationery information
- Information on Secondary Assistance Scheme
 - School policy on contribution and charges
- List of optional costs and voluntary approved requests
 - Music student charges
 - Excursion cost estimates
 - Incentive scheme
 - Qkr app information
 - Saver Plus information

Dear Parents / Guardians,

As we prepare for the upcoming 2024 school year, we would like to bring your attention to several important matters.

- ❖ The 2024 School Year Contributions and Charges have been uploaded on SEQTA.
- ❖ The 2024 Booklist is available on the school website – Only purchase items listed for subjects on your Contributions and Charges sheet. If a subject does not appear on the booklist, you do not need to buy anything for that subject. (Preferred supplier is Campion – however you may choose to use another supplier.)
- ❖ 'Back to School' Booklet 2024 outlines essential details:
 - School policy on contributions and charges
 - Secondary Assistance Scheme (SAS) information
 - Uniform shop opening times and term dates
 - Books/Stationery and sustainable school shop platform for second hand books and uniforms
 - Details of optional costs and voluntary requests
 - Music student charges
 - Excursion cost estimates
 - Qkr! App information
 - Saver Plus information
 - Incentive Scheme
- ❖ Information on Transperth SmartRider cards and bus routes.
- ❖ School Yearbook (\$30) - Now available for purchase via QRK!
Note: The Yearbook previously categorized as an optional cost in the Contribution and Charges has now been removed. More details on page 11.

**The School is in the process of transitioning our accounts to Commonwealth Bank of Australia.
Please do not make payments to Bank West.
Payment for 2024 school year will only be accepted next year!**

CONTENTS

	PAGE
School and Uniform Contact Information	2
Saver Plus Information	3
QKR App Information and Instruction	4
Books and Stationary Order	6
Campion Ordering Process - New upgraded system!	7
Secondary Assistance and Payment Options	9
School Policy on Contribution and Charges	10
Information on Optional and Voluntary Costs	12
Music School Charges	14
Excursion and Tour Charges	15
Secondary Assistance Scheme Information	16
Contribution Charges Incentive Scheme	18

CONTACT

Churchlands Senior High School

20 Lucca Street
CHURCHLANDS WA 6018
T: 9441 1700
F: 9441 1701
E: enquiries@churchlands.wa.edu.au

Uniform Shop Manager

T: 9441 0402
Email: uniformshop@churchlandspc.com.au
Website: <https://shop.churchlandspc.com.au/>

Weekday Trading Hours

Tuesday 8.30am to 4.00pm
Thursday 12.30pm to 5.00pm

Monday 11 December 8.30am to 4.00pm
Closed Tuesday - Friday 12-15 December 2023



2024 Special School Holidays Trading Hours

- Saturday 20 January 9.00am to 1.00pm
- Monday 22 January 9.00am to 1.00pm
- Monday 29 January 9.00am to 1.00pm
- Tuesday 30 January 9.00am to 4.00pm
- Friday 31 January 8.30am to 4.00pm (*first day of school*)
- Thursday 1 February 12.30 pm to 5.00pm
- Regular trading hours will resume Tuesday 6 February



Want \$500 to help you with school costs?



Saver Plus is a financial education program for families and individuals on a tight budget to develop life-long savings habits.

To join, participants must:

- Have a current health care card OR pensioner concession card
- Be studying yourself OR have a child in school
- Have regular income from work, yourself OR your partner

For full eligibility requirements, speak to a Saver Plus Coordinator.

Here are some of the school costs the \$500 can be used for:



laptops & tablets



uniforms & shoes



books & supplies



sports fees & gear



lessons & activities



camps & excursion

For more information, please contact Saver Plus:



saverplus@bsl.org.au



saverplus.org.au



1300 610 355



@SaverPlusAU

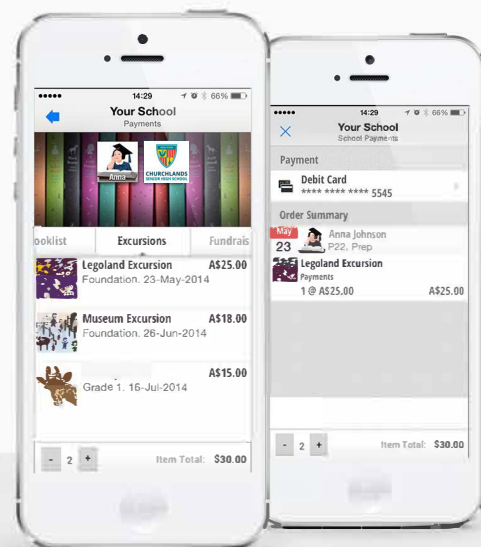
Saver Plus is an initiative of the Brotherhood of St Laurence and ANZ and delivered in partnership with local community organisations. The program is funded by ANZ and the Australian Government Department of Social Services.

For quicker, hassle-free school payments, try *Qkr!* today



Introducing *Qkr!* (pronounced 'quicker') by MasterCard: the easy-to-use phone app that gives you the flexibility to place orders at a time and place that suits you. *Qkr!*:

- Saves you time by letting you order and pay for school items directly from your phone;
- Reduces the need for your child to bring cash to school;
- Reduces the time school staff spend on administrative tasks



Getting started is easy – try it yourself today

Step 1 Download Qkr!

on your Android phone or iPhone. iPad users can download iPhone app



Step 2 Register

Select your Country of Residence as 'Australia' and follow the steps to register

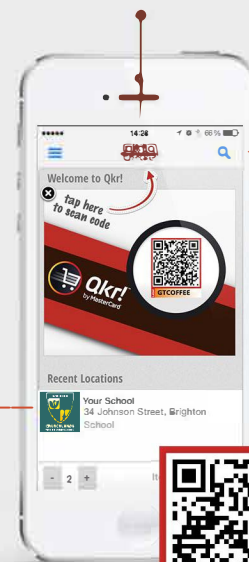
Step 3 Find our school

Scan the QR code or search for our school name. Our school will also appear in "Locations Nearby" if you are within 4kms of the school

Step 4 Register your children

When first accessing your school menu, you will be prompted to register your child. This allows you to make school orders on their behalf.

Scan QR code provided by your school



If within 4kms of the school, you can select from "Locations Nearby"

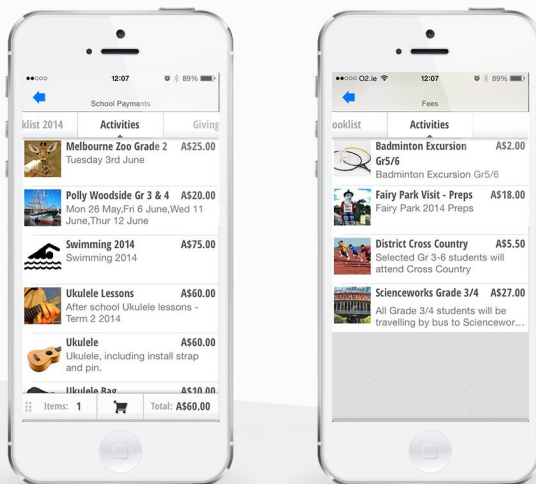


Now you're ready to order directly from your phone...

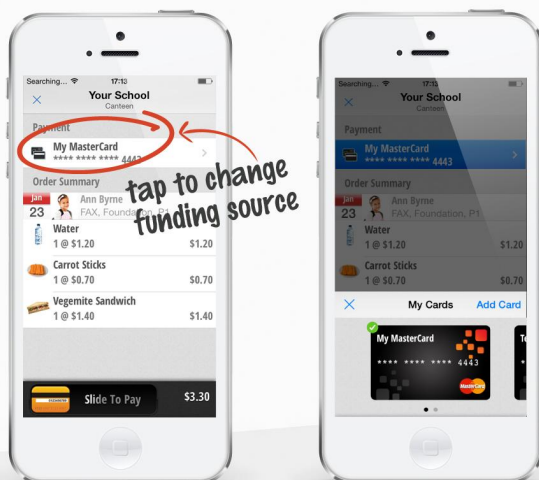
Manage your children's details



Purchase school items



Add multiple payment cards



Pay with any scheme credit, debit or pre-paid card accepted by the school. At checkout, you can select from any of your registered cards.



Please send your comments or suggestions on how the Qkr! service could be improved to the school office.

BOOKS & STATIONERY

Please refer to your Voluntary Contribution & Charges Sheet and purchase only those items listed against subjects your child is enrolled in.

All orders for stationery and textbooks can be made by logging on to the Campion Education website

**NEW
SYSTEM!**

www.campion.com.au

(see code on the front cover of booklist for access)

Before Friday, 15 December 2023

(Stocks cannot be guaranteed for late orders)

Or

Mail your Completed Order List to Campion

Home Delivery Date: No later than Week ending **Friday, 19 January 2024**



Or

Visit their Malaga Store
751 Marshall Road
MALAGA WA 6090

SUSTAINABLE SCHOOL SHOP PLATFORM P&C ASSOCIATION

Second-hand Books & Uniforms

www.sustainableschoolshop.com.au / Contact: 0438 743 444

- Register on Sustainable School Shop website
- List your items for sale
- List wanted ads for those items you are looking to buy
- Buyers contact sellers and arrange where and when to trade
 - **FREE Search only** - Registering/login, searching for sale items and gaining sellers' contact details.
 - **Single item** - Costs \$1.50 to be advertised
 - **Annual Subscription** - Costs \$21.95 per annum.
These are taken by families who have many items to advertise

HOW TO ORDER YOUR 2024 SCHOOL RESOURCES

Order online by your school's due date to save time, hassle and cost.

Orders placed by your school's due date get the first choice of availability, most favourable Postage and Packing costs and are delivered before the start of school.

If you miss your school's due date, you can still order! We can't always guarantee stock availability for orders placed after the due date, and P&P costs may be higher.

You can also visit your local Campion retail service centre! (store details below)

1

Head to www.campion.com.au
Tap on 'Parents order here'.

2

To get started, enter your email or mobile and we'll send you a verification code – no more passwords! When you get the 6-digit code, enter it and you're in!

3

Tap on 'Order Now' when you're ready to place an order.

4

Add your student. You can search for their school name using the 'Search School' field. You can also use their school email address, if known.

5

If asked for the Resource List Code, tap 'Request Code' on the right hand side of the screen.

6

Now follow the prompts to select the year level for your student. Then select the resources you need by expanding subjects and adding items.

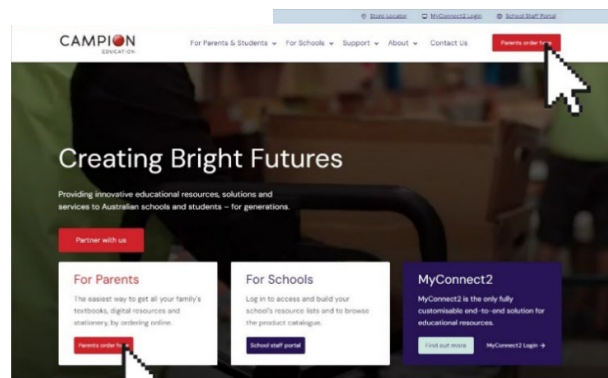
7

Select your delivery method as one of the following:

- **Home Delivery – order by your school's order-by date** for delivery to your nominated address by the date organised with your school (before commencement of 2024 school year)
- **Orders placed after the order-by date:** online orders after the order-by will be at an increased delivery cost. Every effort is made to deliver your order in time for the start of school. To help expedite delivery, please place your order as soon as possible
- **Shop in-store** - anytime, during business hours at your local retail service centre:

8

Complete your details, check the summary, and submit your payment. **And you're done!**

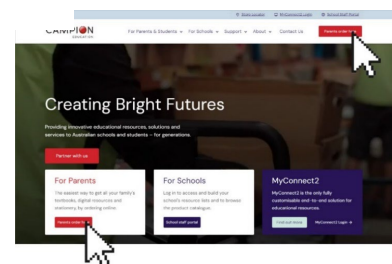


Find local retail service centre:
[campion.com.au/parents/
store-locations/](http://campion.com.au/parents/store-locations/)

MAKE SURE YOU GET THE CORRECT SCHOOL RESOURCES

This school has partnered with Champion Education for textbooks, digital resources and stationery. Order online by the due date to save time, hassle and cost.

Head to www.champion.com.au and click 'Parents order here', or use the QR code to jump straight in:



SECONDARY ASSISTANCE SCHEME

APPLICATIONS CLOSE: Thursday, 28 March 2024

SCHOOL CONTRIBUTIONS & CHARGES
(PLEASE PAY AFTER 1 JANUARY 2024 via Qkr!)
OR in person from

Wednesday, 24th January 2024
Thursday, 25th January 2024

8.00am to 4.00pm
8.00am to 4.00pm

ADMINISTRATION OFFICE

The Manager – Corporate Services and Office Staff will be in attendance to receive school contributions & charges, complete applications for secondary assistance and help with general enquiries. After these two days payment can be made during normal working hours at the office.

PAYMENTS OPTIONS

We accept payment by **Qkr, Cash, Visa Card, Master Card or Debit Card (EFTPOS).**



Credit card payments will also be accepted over the phone by calling 9441 1711 during school hours only.

QKR! By MasterCard – easy to use phone app that gives you the flexibility to pay for school items directly from your phone. See flyer attached.

1. Download the app from the App store (iPhone) or Google Play (Android)
2. Register
3. Find Churchlands SHS – CHLSHS
4. Register your child.

PLEASE DO NOT USE THE SCHOOL BANKWEST ACCOUNT
– WE ARE IN THE PROCESS OF TRANSITIONING OUR ACCOUNTS
TO THE COMMONWEALTH BANK OF AUSTRALIA



SCHOOL POLICY

CONTRIBUTIONS AND CHARGES

The Legal Position

In the public school system the State Government through the Department of Education and Training provides placement at educational facilities for all students who choose to attend Government schools.

The Department also pays for the wages of all teaching and non-teaching positions plus costs such as repairs, maintenance and utilities. Government does not provide for many goods and services which students use and it is reasonable for parents to meet these costs.

Where do Contributions and Charges go?

Some examples include:

Ingredients in home economics, transport, photographic equipment and supplies, art materials, timber, metals, and consumable tools, external instructors, sporting equipment, text book, software, licences etc.

How much can be charged?

For Years 7, 8, 9 and 10 the maximum voluntary contributions a school may charge is currently fixed at \$235, however additional compulsory charges above that figure can be requested for consumables and additional resources.

For Years 11 and 12 there are no maximum charges set by the State Government. Schools endeavour to set their own charges for these years and such charges are compulsory. The school can also request a 50% confirmation charge for these years.

Who should pay?

Given that all students benefit from the pool of collected contributions and charges, it is fair to expect that all parents should pay the contributions and charges. Parents who choose the more expensive option subjects need to meet the costs as provided during the subject selection process. All would agree that it is unfair for those parents who meet their financial commitments to be seen to subsidise the education of those students whose parents choose not to pay their contributions and charges. This school is committed to an even-handed and responsible approach that all parents should make contributions towards their children's education.



A compassionate view

This school is only too aware that the payment of school contributions and charges can be a burden for some families. Part payments, deferred payments, credit card debits are all available to support parents experiencing difficulties. In some cases of financial hardship the Principal will consider full or partial waiver of fees, however we do need to talk to parents about this. Ignoring accounts and reminders is unhelpful to all parties. The school is also keen to assist parents in selecting options that they can afford. To this end subject charges will always be provided to parents prior to selection of subjects.

If parents are having difficulty paying fees, please contact our Manager – Corporate Services, Arlene Thomas to discuss possible payment options.

Payment options

The school makes provision for the following payment options:

- Qkr! App (preferred option)
- Full payment by cash or credit card
- Payments by instalments - cash or credit card



Collecting Contributions and Charges

The school will take a positive approach to collecting contributions from parents of Years 7 to 10. In particular, the school will highlight the benefits to students if all parents meet their contributions. With respect to charges for Years 7 to 12 the school will actively seek full payment of charges.

School Board, in support of this process, has endorsed the following actions:

- Regular accounts sent home to parents.
- Parents who refuse to communicate with the school and have made no effort to pay fees will be referred to our debt collection agency as permitted in the regulations.
- Students whose family has a history of non-payment will be refused enrolment in high cost subjects.
- Year 11 and 12 high cost subjects may require a 50% confirmation charge prior to enrolment.
- Sanctions on extra curricula activities may be imposed at the discretion of the Principal. This could include camps, school socials and sporting activities.

OPTIONAL COSTS

Carnivals (Years 7-10 \$10; Years 11-12 \$5.00)

All students participate in 5 carnivals and selected students participate in 2 other carnivals over a school year. There are also several carnivals during the year that are not whole year groups. Besides the 3 school buses that are used, we are required to bus students to the venue and in some instances need to pay an entry fee. Whilst the school covers the majority of costs, we depend on parents to contribute towards this very valuable opportunity for students to support each other at such events.

Diary (\$10)

School diaries at CSHS are used in a traditional sense for students to record homework, assessments and other information to help with their organisation. They are also used for communication between parents and teachers about attendance, late arrivals, leaving early for appointments or other information. The diaries are used to monitor student movement around the school. They include important information about the school, its staff and policies and study help.

VOLUNTARY REQUESTS

Chaplains (\$10)

The Chaplains support the social, emotional, and non-denominational spiritual wellbeing of the school community whilst embodying the CSHS values of personal, social and environmental responsibility. Their primary focus is to ensure everyone is provided an opportunity to maximise their potential.

Our Chaplains offer confidential, non-judgmental and evidence based pastoral care programs with the intention of empowering every member of our community to be the best person they can be and to contribute to the wellbeing of self and others. They are trained in pastoral care, with ongoing professional learning opportunities provided to specialize in critical incidences, community members living in isolation and mental health initiatives.

Technology (\$100.00)

The State Government provides funding for each student. The salaries for one full time Network Manager and five full time IT Support Officers costing over 500 000 dollars comes out of the funding provided by the State Government. The annual costs for maintaining a safe, reliable and robust learning environment is paid for by the school. Your contribution to this would ensure that we are able to provide the latest technology for our students and parents (more access to your student's progress/records online).

Swimming Pool (\$15)

Students at CSHS have access to an in-house swimming pool. All students participate in a Swimming Program for 50-60 hours per year and the Swimming Carnival. We have an arrangement with Royal Lifesaving WA who provide excellent coaching services for our students. Churchlands boasts of a winning record at inter school swimming carnivals. Parent payments to this request are used to pay to keep the pool clean and safe for students to swim in.

Library (\$30)

Churchlands Library is a vibrant and engaging space for all students to enjoy. Reading helps our students develop empathy and resilience skills as well as assisting with overall wellness. Our library has a great range of novels, fact books, magazines, Ebooks and audio books as well as graphic novels for our students. Online resources such as digital encyclopedias, website subscriptions, digital media and newspapers assist students with researching. Providing colouring, makerspace activities, jigsaws, and chess for your child to enjoy during breaktimes is also a priority. Your contribution makes this possible.



Students Need School Libraries

P&C Contribution (\$70)

The role of the P&C includes assisting in the provision of resources, facilities and amenities for our children and the school. The P&C Contributions support student care programs and projects to improve the school facilities. Preciously P&C Contributions have paid for Solar Panels, UV Cancer Monitors, locker installations, Youth Care Program, equipment in the Design and Technology, Music and Visual Arts Departments, banners for the Physical Education sporting teams, bean bags for the Library etc. Upcoming initiatives include student welfare support programs and initiatives, supporting the Youth Care Program, improvements to the school grounds and whatever else the teachers request to assist our children.



CHURCHLANDS
SENIOR HIGH SCHOOL

**Parents &
Citizens
Association
Incorporated**

Churchlands SHS Building Fund

Under the Income Tax Assessment Act, schools are allowed to set up a tax-deductible School Building Fund. The money from this fund can be used for construction, renovation and extension of school buildings. Donations to this fund are voluntary and are used to replace floor coverings, seating, painting etc. To undertake such refurbishments is costly. Your contribution to this fund will help ensure that your students learn in a bright, clean environment.

YEARBOOK

This much valued magazine is produced each year in colour that captures the highlights, memories and achievements of a school year. It includes photos and written content of the activities that have taken place during the year at school e.g. Form class, excursions and incursions, tours, sporting achievements, school production, social events and much more.

There is a significant change from past practices with the Yearbook. The Yearbook is no longer categorized as an optional cost. Parent/guardians can now conveniently pay for Yearbooks through QKR app.

Music Student Charges



Ensemble Charge - \$40

All music students must pay an ensemble charge of \$40 per year to cover the cost of choral accompaniment and the purchase of scores for the instrumental and choral ensembles. Please note this charge only is included in your fee sheet. The remaining charges listed below are in addition to your school contributions and charges.

Instrumental Hire Charge - \$150

Instrumental students hiring an instrument through the school must pay \$150 to cover the costs for maintenance and repair to the instrument.

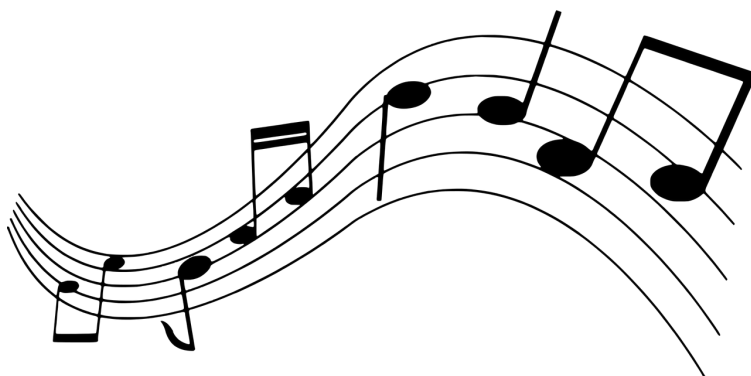
This is payable ONLY by students hiring an instrument through the school.
Please note: Instruments will be given to the student once payment has been received.

Vocal Charge - \$25

\$25 is payable for ALL Voice students to cover photocopying and purchase of repertoire.

Percussion Charge - \$25

Percussion students must pay \$25 to contribute towards repair and upkeep of instruments.



2024 Excursion Cost Estimates

(based on 2023 figures)

In facilitating the collection of funds for excursions, camps, and tours, the school adheres to precise timelines, providing parents with ample opportunities to make payments. To ensure your child's participation, it is crucial to submit payments before the specified deadlines. All parents/guardians are urged to strictly adhere to these timelines, as starting in 2024, no extensions will be made.

CSSH Custom AFL	10.00	Year 9-12 Boys Interschool Hoc	10.00
Harry Perkins	69.00	Year 9-12 Girls Int Hockey Cup	10.00
Production Cast & Crew Shirts	30.00	Year 10 AEP Canberra Tour	3,750.00
STEM Pedal Prix Round 3	70.00	Year 10 Dwellingup Camp	115.00
Tchaikovsky 5th Symphony	13.50	Year 10 French Film	20.00
White Card Training VET	55.00	Year 10 Outdoor Education Camp	115.00
ATAR Music Jazz Trio	160.00	Year 10 AEP Harry Perkins	270.00
Australian Maths Comp	8.00	Year 10 Outdoor Educatiion Dwellin	87.00
Coral Bay Camp - Swim Program	577.00	Year 10 River Cruise Reward Day	66.00
Inter State Tour Insurance	25.00	Year 11 WAJP Heroes, Science Fiction	18.00
Overseas Tour Insurance	75.00	Year 11 ATAR Geography Field	50.00
2024 Japan Tour Deposit	300.00	Year 11 ATAR Politics and Law	28.00
Year 7 Camp	160.00	Year 11 Biology Camp	387.00
Year 7-10 WAJP Heroes, Sci Fi	18.00	Year 11 Dinner Dance	130.00
Year 7-12 Maths e-Resource	22.00	Year 11 Modern History Holocaust	13.00
Year 7-12 SSWA HS Cup Netbal	15.00	Year 11 Physics Day at Adventure World	51.00
Year 7-8 AEP Young Writers	98.00	Year 11-12 CYearano	47.00
Year 7 - 8 Karrinyup Movies	51.00	Year 11-12 French Film	20.00
Year 7 -8 Outback Splash	35.00	Year 11-12 Tracker	42.00
Year 7 AEP Science AQWA	25.00	Year 12 Breakfast	40.00
Year 7-12 Tree Planting	15.00	Year 12 EES Bells Rapid	20.00
Year 8 AEP Coral Bay Camp	1,262.00	Year 12 Harry Perkins Human	73.00
Year 8-9 GMC GST \$74.00	125.00	Year 12 School Ball	130.00
Year 8-10 SSWA High Schools Cup ED	13.00	Year 12 Breakfast Club	40.00
Year 8-12 STEM Pedal Prix 2	50.00	Year 12 Chinese Dinner	43.00
Year 8-12 STEM Pedal Prix Round1	30.00	Year 12 Dinner Dance	115.00
Year 9 AEP Hass Geography	26.00	Year 12 English Literature	42.00
Year 9 Outdoor Ed Camp	73.00	Year 12 French Dinner	58.00
Year 9-10 AEP Young Writers	145.00	Year 12 Japanese Dinner	55.00
Year 9-12 Athletics Carnival	10.00		



GENERAL INFORMATION

The State Government through the Western Australian Department of Education provides an allowance to assist eligible families with secondary schooling costs.

Parents/guardians must apply for the Secondary Assistance Scheme (SAS) each school year (annually) – applications do not carry forward to future years.

To be eligible for the allowance the parent/guardian must hold a Services Australia (Centrelink) or Veterans' Affairs card that represents a statement of income for the family.

The allowance consists of two components:

- \$115 Clothing Allowance paid directly to the parent/guardian or the school.
- \$235 Education Program Allowance paid directly to the school.

Application is made by the parent or guardian for student/s enrolled in Years 7–12 studying a full time secondary course at a Western Australian public school.

ELIGIBILITY CRITERIA

Parent or Guardian must hold one of the following cards:

- Centrelink Health Care Card
- Centrelink Pensioner Concession Card
- Veterans' Affairs Pensioner Concession Card

Please Note: The only Veterans' Affairs Card that meets the criteria is a blue card that is issued annually and expires in December each year. This card is income means tested.

The parent/guardian must be the holder of a card that is valid some time during first term. Students must be listed on claimant's card (except for some year 11 and 12 students, or in cases of disability/health reasons). In this instance, the school must sight both concession cards. The only exception to this is when a student holds their own health care card and has been declared independent by Centrelink (e.g. Living Away from Home). In this instance, a letter of confirmation from Centrelink needs to accompany the application. The concession card must not be expired when applying for SAS.

The allowance is paid up to and including the year the student turns 18 years of age i.e. students born in 2005 or before are ineligible in 2024.

APPLICATION FORMS

Application forms should not be altered and are to be completed at the school or emailed during Term 1 only. If completing an application via email and/or signing the application electronically, applicants must also email a copy of both sides of the applicable concession card with the application to the school. If the application form is completed prior to the commencement of Term 1 the school must complete the enrolment confirmation section to

confirm attendance. (Forms dated by the school prior to Term 1, 2024 will not be accepted). Please ensure you keep a photocopy of the signed form for school records.

Personal information collected will only be used for the purpose of managing the Secondary Assistance Scheme. The Department will not disclose your personal information for any other reason.

LATE APPLICATIONS

Late applications will only be accepted in extenuating circumstances and must be accompanied with a written explanation.

Eligible interstate or overseas students who are enrolled after first term may apply for the allowance. Date of enrolment must be noted on the application.

CONTRIBUTIONS AND CHARGES

Schools will receive the Education Program Allowance of \$235 for Secondary Assistance recipients. This will be applied towards education program charges in the first instance, with any residual to be applied to the voluntary contribution (for years 7 to 10) or as negotiated with the parent/guardian (for years 11 to 12).

CLOTHING ALLOWANCE

The clothing allowance of \$115 will be paid to the parent/guardian unless indicated on the application form that you wish it to be paid to the school. If payment to the parent/guardian is requested, the payment will be deposited into the parent/guardian bank account. It can take between 8 to 12 weeks to receive this payment.

PROCESSING OF PAYMENTS

Once the form is completed by the parent/guardian, the school will witness the application and submit to the Financial Planning and Resourcing Directorate for processing via:

- electronic file (via email) whilst retaining the **original application form at the school**
- or
- posting the **original application forms** retaining a photocopy for the school records.

If you change any of your details supplied on the application form, please notify us as soon as possible on 9264 4516.

We will endeavour to have all clothing payments made to the parent/guardian by 31 May 2024.

FURTHER INFORMATION

Financial Planning and Resourcing Directorate Department of Education
151 Royal Street
EAST PERTH WA 6004

Telephone: (08) 9264 4516

E-mail: student.allowances@education.wa.edu.au



APPLICATIONS CLOSE

THURSDAY
28 MARCH 2024

- Valid to claim with Parent/Guardian card only. Student cannot claim with own card if living with parent(s)
Not eligible if student born in 2005 or before.
If living as an independent student, letter of proof from Centrelink must be provided.
Please retain a copy of the application form at the school
The Education Program Allowance (EPA) of \$235 for students will be paid to the school and will be applied towards education program charges in the first instance.

SCHOOL NAME (Please use school stamp including phone number if possible) SCHOOL CODE

CONCESSION CARD PARENT/GUARDIAN INFORMATION

Form fields for concession card parent/guardian information including last name, first name, street address, suburb, postcode, contact phone, and e-mail.

CONCESSION CARD PARENT/GUARDIAN DETAILS

Form fields for concession card details including Centrelink Health Care Card, Pensioner Concession Card, and Veterans' Affairs Pensioner Card.

CARD No. (CRN OF PARENT/GUARDIAN): (as per Centrelink Card)

Form fields for card start and expiry dates.

STUDENT DETAILS (as listed on applicant concession card) INDEPENDENT STUDENT (Attach letter from Centrelink)

Table for student details including last name, first name, date of birth, year level, and clothing allowance to be paid to (School or Parent).

BANK ACCOUNT DETAILS OF PARENT/GUARDIAN (Complete only if clothing allowance to be paid to parent)
Payments will only be made by EFT - Please write clearly

Form fields for bank account details including Name of Account Holder(s), BSB Number, and Account Number.

PARENT/GUARDIAN DECLARATION

- I have not claimed nor do I intend to claim the ABSTUDY School Fees Allowance in 2024 for any of these children.
I have not claimed this allowance for any of these children at another school in Western Australia in 2024.
I authorise Centrelink to verify my current benefit status and other pertinent details to gain this entitlement.

I DECLARE THE ABOVE TO BE TRUE AND CORRECT AND AM AWARE THAT IT IS AN OFFENCE TO PROVIDE FALSE OR MISLEADING INFORMATION.

PARENT/GUARDIAN SIGNATURE: DATE:

- If you are completing this form electronically and are unable to sign this form please check this box to confirm the above information is true and correct.

If statements made in the application later prove to be false or misleading this application may be declined. Information supplied will be checked by the school.

WITNESS DECLARATION (to be completed by the school)
(Concession card and application must be sighted and witnessed at attending school by a Department Officer)

I have sighted the claimant's card and confirm the details provided are correct.

Form fields for witness declaration including Print Name of Witness, Witness Signature, Position Held, and Date.

If the form is completed and dated prior to the start of Term 1 complete the commencement confirmation below (tick box and enter current date).

- I confirm that the above student(s) has/have commenced at this school in Term 1, 2024 DATE:

Win...Win...Win...

Pay your amount listed on the bottom of your contribution and charges by **Thursday, 28 March 2024** and go into a draw to win back your payment!

6 Winners

One for each year level
 - Year 7 - Year 8
 - Year 9 - Year 10
 - Year 11 - Year 12



CHURCHLANDS SENIOR HIGH SCHOOL Contributions and Charges for Year Ten 2024

Student:

25 November 2023

Subject Details	Voluntary Contributions	Charges	Total
ACC10 10 Accounting S2	\$8.50		\$8.50
AFN10 10 Fine Art S1	\$8.50	\$27.00	\$35.50
EN10P 10 English S1	\$20.00	\$47.50	\$67.50
EN10P 10 English S2	\$4.00	\$0.00	\$4.00
HE10 10 Health Education S1	\$4.00	\$0.00	\$4.00
HE10 10 Health Education S2	\$20.00	\$0.00	\$20.00
HS10P 10 Humanities and SS S1	\$4.00	\$0.00	\$4.00
MA10P 10 Mathematics and SS S2	\$20.00	\$0.00	\$20.00
MA10P 10 Mathematics Pathway 3 S1	\$20.00	\$0.00	\$20.00
PEG10 10 Physical Education Girls S1	\$20.00	\$0.00	\$20.00
PEG10 10 Physical Education Girls S2	\$20.00	\$0.00	\$20.00
PHO10 10 Photography S1	\$8.00	\$0.00	\$8.00
SC100 10 Science General S1	\$8.00	\$0.00	\$8.00
SC100 10 Science General S2	\$20.00	\$0.00	\$20.00
TCS10 10 Computer Science S2	\$8.50	\$0.00	\$8.50
TFE10 10 Food for Entertaining S2	\$20.00	\$0.00	\$20.00
TJW10 10 Jewellery Design S1	\$8.50	\$0.00	\$8.50
Sub Totals	\$235.00	\$115.00	\$350.00
Optional Costs			
Carnivals	\$10.00		\$10.00
Diary	\$10.00		\$10.00
Voluntary Requests:			
Chaplain	\$10.00		\$10.00
Library	\$30.00		\$30.00
Swimming Pool	\$15.00		\$15.00
Technology	\$100.00		\$100.00
P&C Contribution	\$70.00		\$70.00
Total (Pay by Thursday, 28 March 2024 to go into incentive draw)			\$225.00
			\$610.50

The School is seeking voluntary donations from those who have the capacity to give to the School Building Fund which is Tax deductible

SCHOOL BUILDING FUND

- \$100.00
- \$200.00
- \$500.00
- Other