



**CHURCHLANDS**  
SENIOR HIGH SCHOOL

# Churchlands Bytes

Tuesday 9 December 2025 - Circulated Fortnightly

Issue: 16 (2025)

## News in Brief

### Year 7 Science

Mr Latif's Year 7 Science class joined Ms Anthony for a weeding session. This is part of the ongoing Abbeybrook Reserve restoration that the Churchlands Environmental Group engages with in collaboration with the City of Stirling. Yuqi L, Gabriel A-A., Carter L., Noah A., Jace L-H., Darcy B., Kayshaun N., and Declan C., used their newly developed skills in plant identification to hunt down invasive weeds – targeting those in flower and those about to spread seed to give our newly planted natives the best chance of survival.



### Dance Drama Night

The Churchlands Senior High School Dance Drama students from Years 9-12, and our Dance Club, are presenting their works from this semester at our Semester 2 Dance Drama Night. Come and join us for a night of performances and support our students. Tickets are FREE, however, to ensure you get a seat, please arrive from 5.45pm. Please spread the word! We look forward to seeing you there.



## What's Coming Up?

### Term 4, 2025

9 Dec	-	Technical Rehearsal All Day Dance & Drama
10 Dec	-	Dance & Drama Night
11 Dec	-	The Arts: Year 7-12 End Of Year Exhibition
	-	Follow The Dream Year 7&8 Point Walter Excursion
15 Dec	-	Year 9 Outdoor Education Excursion: Day 1
16 Dec	-	Year 9 Outdoor Education Excursion: Day 2
	-	Whole School Assembly
17 Dec	-	Year 7-10 Rewards Day
18 Dec	-	END OF YEAR FOR STUDENTS (Students return 2 February 2026)

### Help Our Year 12 Students Get Hands-On Automotive Experience!

Our Year 12 Certificate II Automotive students use real cars to develop their practical skills. To give them the best learning experience possible, we're looking for a small car donation that can be used for training and assessment activities in our school workshop.

Ideally, the vehicle would be:

- Incomplete, unregistered, or not currently roadworthy (it doesn't need to run!)
- A small car or hatchback, suitable for student access and workshop use
- Preferably petrol not diesel
- Safe to work on, with no major structural or hazardous damage



This vehicle will be an invaluable teaching resource—helping students learn essential diagnostic, maintenance, and repair techniques in a real-world, hands-on setting.

If you, or someone you know, have an old vehicle that's no longer needed, please consider donating it to support our young learners. We can assist with collection.

For more information or to arrange a donation, please contact Harleigh Uren at [huren@churchlands.wa.edu.au](mailto:huren@churchlands.wa.edu.au)

Your support helps inspire and prepare the next generation of automotive professionals—thank you for helping us keep education moving forward!



*The Churchlands Senior High  
School Board  
wish you a Merry Christmas, safe  
and happy holidays, and all the  
best for 2026!*





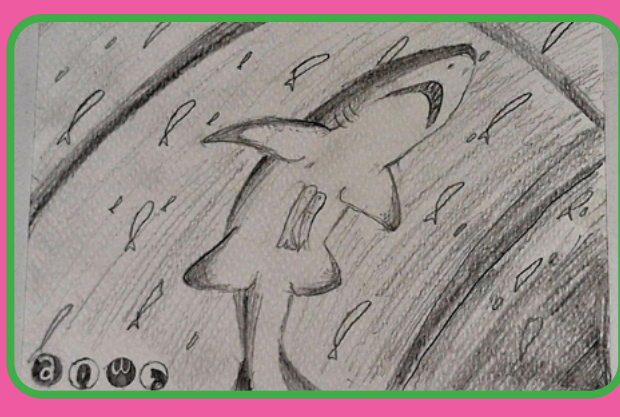
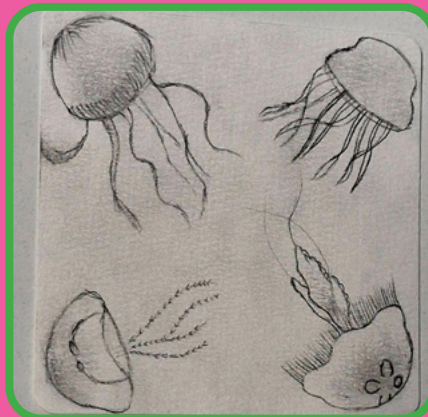
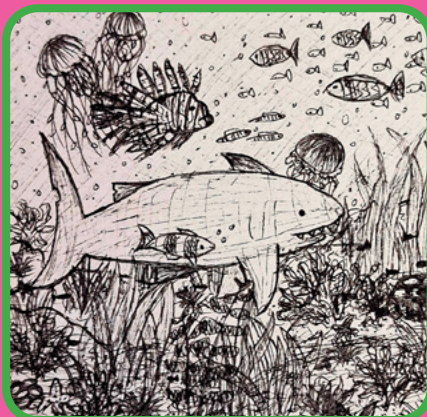
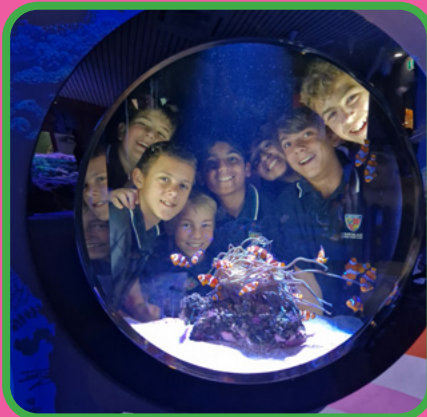
**CHURCHLANDS**  
SENIOR HIGH SCHOOL

# Churchlands Bytes

## Year 7 AEP Science Excursion to AQWA

Our Year 7 AEP Science students recently visited AQWA as part of their Biology unit on ecosystems. This excursion gave students the chance to observe real marine habitats and species up close, helping them make direct links to the Year 7 Biology curriculum, including food webs, classification, and how organisms interact with their environment.

Students explored a range of Western Australian ecosystems and observed how different species survive and depend on one another. Some students chose to complete more detailed scientific sketches during the visit, carefully recording features and behaviours in their own drawings. A few examples are included below.







**CHURCHLANDS**  
SENIOR HIGH SCHOOL

# Churchlands Bytes

## Languages - Japanese Club End of Year Takoyaki Celebration

To reward our dedicated Japanese Club members for their consistent participation this year, we hosted a special end-of-year Takoyaki party! Students learned about the history of takoyaki, explored its traditional ingredients, and followed a recipe step-by-step before making their very own takoyaki.

Many students stepped outside their comfort zones and tried new flavours — including boiled octopus, takoyaki sauce, bonito flakes, and seaweed powder. And for extra fun... one mysterious Takoyaki was filled with wasabi!

It was a fantastic celebration of culture, teamwork, and courage in trying something new. Well done to all our Japanese Club members for a wonderful year!



## Rottneest Swim

A big well done and thank you to the staff who donated their Saturday to escort 90+ Churchlands Swimming students to Rottneest for the annual 1.6km Swim Thru. It was a long day, although a good one. The students were amazing and we had several prize winning swimmers. Well done to Andy, Meg and Hayley who completed the swim with the kids, and of course Toby, Jakson, Glenn and swim coach Maddie for cheering the kids across the line.



## Year 10 HASS Red Cross Incursion

This week the HASS Department invited the Red Cross out to give a presentation about the ongoing rise in people forced to cross international borders in search of refuge. Recently Australia issued its one-millionth protection visa since WWII. By offering 20,000 protection visas annually, Australia provides a critical lifeline to some of the 117 million individuals currently displaced worldwide.

The incursion explored important questions such as "What is an asylum seeker and how do people become refugees?", "Is it legal to seek asylum?", "What is Australia's obligation towards asylum seekers?", and "What is the difference between an asylum seeker and a refugee?". The presentation covered the theme of human rights, United Nations Conventions, and facts about the refugee plight within the global and Australian context. An interactive opportunity for the whole class was also offered so the students could imagine what it might be like to flee a country for a range of reasons.





# Churchlands Bytes



**CHURCHLANDS**  
SENIOR HIGH SCHOOL

## SCHOLARSHIPS

### Churchlands Foundation Scholarship - Tshering B.

Churchlands SHS graduate Tshering B. recently represented Bhutan at the 2025 Asia Youth International Model United Nations in Bangkok, Thailand. As a recipient of the Churchlands Foundation Individual Leadership Scholarship, Bidha was able to attend the four day conference with over 200 delegates from 46 different countries, to address economic and environmental challenges facing the Asian region. Bidha reported that the conference was 'not for the faint of heart' but a wonderful networking opportunity and a chance to build valuable skills; she would thoroughly recommend the experience to other Churchlands SHS students.

*(photo credit: Asia Youth International Model United Nations photographer)*



### John Curtin Scholarship - Sienna V.M.

We're thrilled to announce that Sienna V.M. has been awarded the prestigious John Curtin Scholarship.

The John Curtin Scholarship is one of Australia's most renowned and competitive scholarships, designed to support exceptional students who demonstrate outstanding academic achievements, leadership potential, and a strong commitment to community service. The scholarship provides financial assistance for all tuition fees, living expenses, overseas study opportunities and access to a network of influential professionals. It also offers leadership development opportunities and mentorship, enabling recipients to make a real impact in their chosen fields.



Sienna's dedication, passion for learning, and commitment to making a difference have truly set her apart. We couldn't be prouder of her accomplishments, and we look forward to seeing the amazing things she will continue to achieve! Well done, Sienna.

### AMPOL Best All Rounder WA State Winner - Claudia G.

We are absolutely thrilled that Year 12 student Claudia G. has been named the WA state winner of the Ampol Best All Rounder Award. Claudia's commitment to service and leadership is both remarkable and inspiring. She has contributed to global and local communities alike; taking part in World Challenge in Sri Lanka, where she helped deliver solar lighting to remote villages, achieving her Gold Duke of Edinburgh Award, and dedicating more than 700 hours to community service through organisations such as Rotary, the Salvation Army, and Waste Warriors.

Earlier this year, Claudia was also recognised as the runner up in the WA Zonta Young Woman in Leadership Awards, and she has been an enthusiastic and influential student leader at Churchlands SHS, raising significant funds for charities. Claudia has managed to do this whilst maintaining positive relationships with staff and peers, and keeping up to date with her academic requirements. We are incredibly proud of her achievements and the positive impact she continues to make.



### Polly Farmer Foundation - Follow the Dream Awards

Last night Aboriginal students from Churchlands attended a presentation ceremony for the Polly Farmer Foundation's Follow the Dream Jinjeejerdup program. The event was also attended by students from Mt Lawley SHS, Shenton College, Warwick SHS, Duncraig SHS, Ballajura Community College, Carine SHS, Belridge Secondary College, and Perth Modern School.

We are very proud that six of our students were presented with awards: Sienna M. for the joint Dux of Year 12, Lucy L. for the runner-up Dux of Year 11, Indi L. for Dux of Year 9, Kyah S. for runner-up Dux of Year 9, and Shakira T. (Year 7) for the Moort award. Charlee W. (Year 9, not pictured) was the recipient of the Koort award. Congratulations to all of our award winners!"





**CHURCHLANDS**  
SENIOR HIGH SCHOOL

# Churchlands Bytes

## Learning Support News NAPLAN - TERM 1, 2026 -

### NAPLAN - TERM 1, 2026

Students in Year 9 2026 with a diagnosed learning disorder or condition that affects their ability to demonstrate their knowledge in timed conditions may be eligible for Equitable Access to Assessments.



If your child has a diagnosis affecting their learning and they do not currently have a Learning Support Plan or Student Profile in place, please email Emma Lawson in the Learning Support Team ([elawson@churchlands.wa.edu.au](mailto:elawson@churchlands.wa.edu.au)) with details of their diagnosis, including supporting documentation (diagnostic reports, specialist letters etc). Emma will then be in contact with you to discuss your child's situation further so we can determine their eligibility.

This information must be received by Friday 6th February. Unfortunately, the school cannot guarantee the provision of equitable access to assessments in next term's NAPLAN if information is received after this date.

Students who have a Learning Support Plan or Student Profile that states their current special exam arrangements do not need to do anything. A member of the Learning Support Team will be in contact in due course to arrange their adjustments for next terms NAPLAN.

### ASDAN 2025

Throughout 2025 myself and several of the amazing educational assistants at Churchlands SHS have had the absolute pleasure of delivering the ASDAN Transition Challenge program for the first time to a select group of Year 9 students. ASDAN (Award Scheme Development and Accreditation Network) is a UK based education program that offers flexible, skills-based programs designed to support learners in developing essential life and personal skills. This is achieved through a focus on practical, real-world learning rather than what is delivered in a traditional mainstream classroom. ASDAN promotes independence, confidence, the development of practical life skills and ultimately employability by allowing students to work at their own pace and opportunities to achieve success through hands-on activities and achievable goals.

In Term 4, the ASDAN students focused on developing life skills such as preparing food and planning for an event. They spent many hours in Food 1 refining their measuring, time management and cooking skills. There was a lot of tasting involved too of course! The boys made many delicious pizzas, choc-chip cookies and delicious lemonade. In Week 7 all the skills were put to the test when the ASDAN crew hosted a brunch, attended by family and staff. The success of this event was the culmination of many hours of hard work, perseverance and resilience. All students involved should be really proud of what they achieved.

A collective effort leads to a successful result and I would like to specifically thank; Claire Shoebridge, Program Coordinator Learning Support for all her unwavering support; the tireless efforts of the amazing EA staff notably Nina Henschel, Vicki Sparks, Shirraz Roberts, Simona Ciupac and Lorraine Keeney; and all the amazing CSHS staff across all learning areas (a huge call out to Susan Wilson in English, Mark Graber in Math, Lisa Barlow, Ryan and Jan in Technologies) who gave their time, wisdom and resources to support the program. So many people helped us this year I cannot name them all! Without all your support it would not have been possible to achieve all we did.







CHURCHLANDS  
SENIOR HIGH SCHOOL

# Churchlands Bytes

## World Challenge Borneo Expedition - WACE Achievement Recognition -

In early January 2025, a group of 25 Churchlands students, accompanied by four teachers and two experienced guides, embarked on the unforgettable World Challenge expedition to Borneo. Their journey took them through Kota Kinabalu, the rugged Pahu Trail trek, vital gibbon conservation work, and the world renowned Sepilok rehabilitation centres in Sandakan.

Among the group, seven students successfully completed all World Challenge requirements, including an in-depth expedition report, to achieve their four WACE units: (other students are still working on their reports) Chloe V., Sam L., Naiya G., Methuli E., Ava N., Caitlyn P. and Alex B.

This significant accomplishment reflects their commitment, resilience, teamwork and willingness to step outside their comfort zones.



The following reflections from students highlight the profound impact the expedition had on them:

*"Borneo is a special trip for me—it was the first time I've ever done something of this scale, and I'll always remember it."*

*"The thing that compelled me to go on this trip was the sun bears. They've always been a favourite animal of mine and the thought of seeing one in person was so exciting—and this experience exceeded expectations."*

*"Newly found friendships and a once-in-a-lifetime experience."*

*"The trip was amazing as everyone learnt about many different traditions, customs, cultures and animals over the period."*

*"The trip was amazing, and we saw so many cool animals and got to experience different cultures and ways of life to Australia."*

From trekking through dense rainforest to working hands on with conservation teams, the students demonstrated maturity, curiosity, and a genuine appreciation for Borneo's people, wildlife, and environment.

Congratulations to all students involved and especially to the seven who completed their full WACE accreditation. Their efforts embody the spirit of exploration, learning, and global citizenship that World Challenge aims to inspire.







CHURCHLANDS  
SENIOR HIGH SCHOOL

# Churchlands Bytes

## Library News

Over the past two weeks, our students have been busy getting the library ready for the holiday season! From creating colourful paper chains to helping with our festive displays, the library is now filled with Christmas cheer.

Next week, our Book Club will be building our very own library snowman, and we'll have plenty of Christmas crafts available. Why not make a holiday card or try your hand at building a LEGO Christmas tree?

Our library staff, Sally Morris and Tori Brennan, wish all our students a wonderful break. We're already excited and planning for an amazing 2026!

Don't forget to grab some books for the holidays — or download eBooks and audiobooks anytime through Wheelers.



**Churchlands Senior High School**

LIBRARY

BROWSE

LOANS

SAVED

Search for books

Advanced Search

Churchlands Senior High School

Access your eLibrary anywhere, anytime, on multiple devices.

Start Browsing

Newly Published

The Grandest Game  
by Jennifer Lynn Barnes

Juice  
by Tim Winton

Girls with Goals: How women's football is changing the world  
by Clelia Castro-Malaspina

All Better Now: The epic YA novel about a boy who can't feel anything  
by Neal Shusterman

Never Thought I'd End Up Here  
by Ann Liang

The Hidden Forest  
by Kiah Thomas

Access your eLibrary anywhere, anytime, on multiple devices

SCAN TO LAUNCH APP

Or add using your setup code 0381





# Churchlands Bytes



**CHURCHLANDS**  
SENIOR HIGH SCHOOL



## ACADEMIC EXTENSION PROGRAM Year 7 2027

**TESTING**  
**Saturday 21 February**  
**at 9.00am**

**APPLICATIONS close**  
**Thursday 5 February 2026**

If your child is going into Year 7 2027 you can apply for selection into our school based Academic Extension Program (AEP).

Testing will take place at Churchlands Senior High School, 20 Lucca Street, Churchlands on **Saturday 21 February 2026 at 9.00am.**

To apply, an online application is available via our website:

<https://www.churchlands.wa.edu.au/learning/academic-extension-program>

*We welcome all prospective students from within our intake area. We may also accept a limited number of students residing outside our catchment area and we encourage academically gifted students to apply.*

Further information:

**T:** 9441 1700 **W:** [churchlands.wa.edu.au](https://www.churchlands.wa.edu.au)

**Connect with us on:**



/Churchlands.SHS



**CHURCHLANDS**  
SENIOR HIGH SCHOOL

**Parents &  
Citizens  
Association  
Incorporated**

### Support Our School

Your voluntary contribution makes a real difference! Thanks to the generosity of our amazing Churchlands parents, we've been able to:

- Improve our school grounds
- Install air-conditioning
- Upgrade infrastructure and learning tools
- Provide toasties and support chaplaincy — and so much more!

Every contribution, big or small, helps our P&C continue making our school a better place for every student. Please support your P&C by paying your annual voluntary contribution.

Thank you for helping our school thrive!

### Lost Property

We're almost at the end of Term 4 and the lost property table still have a few items that need collecting. If your child has lost or misplaced any articles, please have them come to the table in the corridor outside Student Services Middle Secondary.

Any lost uniforms that are named will be returned to students. At the end of the term, all other items will either go to charity or be binned, depending on condition.

Lost property of any value (phones, airpods, jewellery, glasses etc) can be found in the Main Administration and Student Services.

Thank You.







CHURCHLANDS  
SENIOR HIGH SCHOOL

# Churchlands Bytes



CHURCHLANDS  
SENIOR HIGH SCHOOL

## Year 12 End of Year Checklist

☐

Have your child's school charges been paid?

☐

Have you downloaded your child's school reports?

(Access to SEQTA Engage will cease on 31 December 2025)

☐

Do you have any uniforms you would like to donate?

(Please deliver to the front office)

☐

Do you have any current text books to donate?

(Please deliver to the front office)

## Uniform Shop - Update 2025 Term 4

*Weeks 1 - 9*

Tuesday 8.30am-4.00pm

Thursday 12.30pm-5.00pm

*Week 10*

Monday 15 December 8.30am - 4.00pm  
(Last day of trade for 2025)

## 2026 January School Holiday Trading Hours

Tuesday 27 January 9.00am - 1.00pm

Thursday 29 January 12.00pm - 5.00pm

Friday 30 January 9.00am - 1.00pm

Saturday 31 January 9.00am - 1.00pm

Monday 2 February 8.30am - 4.00pm  
(First Day of School)

Tuesday 3rd February 8.30am - 4.00pm

Thursday 5th February 12.30pm - 5.00pm

Return to regular trading from Week 2.

Just to remind current Year 8 and Year 10 parents that their son/daughter will need a change of polo colour for next year. Year 8s will go into teal, and Year 10s into white.

The shop is open on  
Tuesdays from 8.30am - 4.00pm and  
Thursdays from 12.30pm - 5.00pm.

In Week 10 we will only be open on Monday  
from 8.30am - 4.00pm.

We will be open at the end of January (dates and times will be on the school website) but these are typically very busy days so it's a good idea to get organised before the end of term.



Please be advised that from 30 November 2025, there will be changes to Transperth bus services which may impact your child's journey.

Parents and students can find information on changes specific to each school on the Transperth website  
<https://www.transperth.wa.gov.au/Service-Updates/Service-Update-Details/november-30-school-service-changes>

Additional information on route specific changes can be found here  
<https://www.transperth.wa.gov.au/Service-Updates/Service-Update-Details/november-30-bus-service-changes>

Information about specific changes relating to Churchlands SHS is listed below:

### Churchlands Senior High School

#### Routes 410 and 412

- Will undergo time changes
- Will now extend to service Stirling Station and Karrinyup Bus Station via Scarborough Beach Bus Station.

#### School Special 738

- Will now depart Weaponess Rd/Hamer Av 5 minutes earlier at 8.20am.



# Family and Community Engagement

**Churchlands SHS**

Gallery Space, Memory Close

**2025**

**Thursday  
11th December  
5-7PM**

## **Y7-12 End of Year Show The Arts Exhibition**

Featuring Media, Photographic and Visual Arts work.

**Guest Speaker & Award Presentation  
Drinks & Nibbles provided.**

Artwork by: Chau Nguyen



# Family and Community Engagement




Download

 **Meetup**

SCAN HERE (SOCCER) 

(BASKETBALL) 

## SOCIAL SOCCER & BASKETBALL GAMES

Beginners welcome | Weeknights and Weekends





Make New Friends | Friendly & Social Games | Keep Fit and Have Fun!

For more information or to reserve your spot please contact us below

 [info@ahsport.net](mailto:info@ahsport.net)
 [www.ahsport.net](http://www.ahsport.net)

 0448894457
  6 Lucca Street, Churchlands 6018




Download

 **Meetup**

SCAN HERE (SOCCER) 

(BASKETBALL) 

## SOCIAL SOCCER & BASKETBALL GAMES

Beginners welcome | Weeknights and Weekends





Make New Friends | Friendly & Social Games | Keep Fit and Have Fun!

For more information or to reserve your spot please contact us below

 [info@ahsport.net](mailto:info@ahsport.net)
 [www.ahsport.net](http://www.ahsport.net)

 0448894457
  6 Lucca Street, Churchlands 6018




**SUSTAINABLE SCHOOL SHOP**

Buy and sell second-hand textbooks and uniforms  
[www.SustainableSchoolShop.com.au](http://www.SustainableSchoolShop.com.au)

### --- Second-hand Textbooks and Uniform ---

We have partnered with Sustainable School Shop to provide families access to second-hand textbooks, uniforms, calculators, musical instruments, sports gear and much more!

Sustainable School Shop have preloaded items specific to our school onto their site. This makes it super easy to list your items for sale and to buy items.

See all the second-hand uniform items for sale here:  
<https://www.sustainableschoolshop.com.au/stocktake/churchlands-senior-high-school>

See all the second-hand textbooks for sale here:  
<https://www.sustainableschoolshop.com.au/booklist/churchlands-senior-high-school>

So jump onto the site, register and list your items for sale, you will be:

- reusing items rather than adding to landfill
- making money on items you sell
- saving money on items you buy
- providing another family in our school with cheaper items
- helping to create a culture of contact amongst our school community families!

Login or Register here:  
<https://www.sustainableschoolshop.com.au>



# Family and Community Engagement

## Students Using eRideables

*eRideables can include eBikes, eScooters and eSkateboards*

These have become a very popular means of transport and there are now WA Traffic Laws associated with them.

These include:

- Only students who are 16 and over are legally allowed to ride eRideables.
- When riding, a helmet must be worn.  
Due to their increased use at Churchlands, we will implement the following requirements to ensure safety and legal compliance.

Acceptable use at Churchlands will now require the following:

- Only Year 11 and/or 12 students will be allowed to bring these onto the school premises.
- For safety purposes students must walk these off the school grounds in the afternoon.
- Students must store eRideables in our locked bike compounds not outside.

This week the school aims to educate students around these changes but from next week normal school behaviour management processes will be applied.

## Important

Drop Off and Pick Up  
Reminders



Parking around the school can become quite congested. For the safety of your children and our staff, please see below for a safer drop off and pick up:

**Sports Hall** - STAFF ONLY

**Front Main Administration:** STAFF with some Visitor parking (not suitable for drop off/pick up).

**Memory Close:** STAFF & Student 'P' Platers ONLY

For parents wanting to drop off/pick up students, please use either the Hale Road Drop & Ride near the tennis courts or Lucca Street (please be mindful of other students and buses when entering/exiting).

**Parents are reminded that parking in bus bays is not allowed during the times specified on the relevant signage. The potential for accidents involving our students as well as the cars and buses is a significant concern.**

**RU  
HANGRY** **8.15-9AM  
TOASTIES  
& MILO**  
**EVERY  
TUE & FRI  
BREAKFAST!**



CHURCHLANDS  
SENIOR HIGH SCHOOL

FREE FOOD! FREE FOOD! FREE FOOD!



**FOOD 1**  
COURTYARD

**MUSIC GAMES  
+  
A GOOD START  
TO YOUR DAY!  
ALL WELCOME**

## - Reminder for Students -

**Students are reminded that they are still required to Sign In and Out of their respective Student Services, even if parents have notified the school of their absence.**

**- Thank You -**

## Free Sanitary Products

FREE sanitary products are available to students at Churchlands SHS. Vending machines for students to access products are located in several locations including First Aid office, Junior and Middle Secondary Student Services, Administration and A Block toilets.