



**CHURCHLANDS**  
SENIOR HIGH SCHOOL

# Churchlands Bytes

Tuesday 24 June 2025 - Circulated Fortnightly Issue: 8 (2025)

## News in Brief

### Exciting Opportunity for Year 9 Students

Our Year 9 students recently had the opportunity to explore future career pathways through the North Metro TAFE Taste Tester Courses! These hands-on, one-day experiences offered them a glimpse into a variety of industries and vocational fields — helping them discover passions and possibilities for life beyond school. A fantastic way to get inspired, learn new skills, and start thinking about the future!



### Senior Basketball - Friday Night Lights

Congratulations to the Churchlands Chargers Senior Basketball teams for taking away the Trophy at Shenton's Friday Night Lights 2025. The Chargers successfully battled it out against teams from Shenton College and Newman College in a round robin tournament. The atmosphere was electric with a huge attendance, tunes pumping, food trucks offering sustenance and some seriously good basketball.

Well done to every team member and special mention to our individual Award winners:

Sara Winner – 3 Point Shootout  
Sara LMVP  
Delany R Runner Up MVP  
Jordan W MVP  
Go Chargers!!



## What's Coming Up?

### Term 2, 2025

23-25 Jun	-	Year 10 Immunisations
23-27 Jun	-	Year 10 Outdoor Ed. Camps
24 Jun-4 Jul	-	Year 10 into Year 11 Transition Program (HASS)
24 Jun	-	Dance and Drama Tech Rehearsal All Day
25 Jun	-	Dance/Drama Night
30 Jun-4 Jul	-	NAIDOC Week
30 Jun	-	NAIDOC Assembly Period 2
	-	Year 10 into Year 11 Info Night 6.00 - 7.00 pm
	-	Year 11 into Year 12 Info Night 7.15 - 8.00pm
1 Jul	-	Year 10 Lightning Carnival
	-	Careers Expo at Carine SHS 2.00pm - 6.30pm
	-	Year 11 & 12 CEM Tree Planting Camp 1-3 July
2 Jul	-	NAIDOC Footy Match
	-	Year 8 Gina Williams Concert
3 Jul	-	NAIDOC Market Day
	-	Year 10 End Of Year Assembly - Period 3
	-	Health Expo - Period 3-5
4 Jul	-	NAIDOC Free Dress
	-	END OF TERM
	-	Students Return 22 July (T3)

## Lost Property

We're coming to the end of Term 2 and the accumulation of lost property is starting to pile up.

If your child has lost or misplaced any articles, please have them come to the table in the corridor outside Student Services Middle Secondary.

Any lost uniforms that are named will be returned to students. At the end of the term, all other items will either go to charity or be binned, depending on condition. The Lost Property table will be cleared at the end of the last day of school.

Lost property of any value (phones, airpods, jewellery, glasses etc) can be found in the Main Administration and Student Services.





**CHURCHLANDS**  
SENIOR HIGH SCHOOL

# Churchlands Bytes

## Churchlands SHS Dance & Drama Night

Our talented Dance, Drama, and Circus students from Years 9-12 are showcasing their work from Semester 1 in an evening of exciting performances!

**Date:**  
**Wednesday 25 June**

**Time:**  
**6.00-7.30pm (Doors open from 5.40pm)**

**Venue:**  
**Taryn Fiebig Concert Hall**

**FREE entry - Arrive early to secure your seat!**

Come along to support our amazing students and enjoy a night celebrating the performing arts. Spread the word - we can't wait to see you there!



## Push-Up Challenge

Churchlands SHS students have embarked on a new challenge to help raise funds for much needed mental health services and initiatives.

From the 4 to 26 June, the School Captains and other ambassadors, have been leading the Push Up Challenge within our school.

Throughout the challenge the participants will each complete 3,214 push ups, and learn and spread awareness about mental health whilst raising money for their choice of Lifeline, Headspace or the PushForBetter Foundation.

So far, the school has 21 teams registered, has banked 132, 867 push ups and raised \$6,884, almost reaching our updated \$7,500 goal.

If you wish to support the cause and our now very muscly students, scan the QR code to donate!", or go to page at <https://www.thepushupchallenge.com.au/fundraiser/ChurchlandsSeniorHighSchool>



**THE PUSH-UP CHALLENGE**

The Push-Up Challenge is all about the push for better mental health.

3,214 Australians tragically lost their lives to suicide in 2023.

With your help, we can make a difference.

**4-26 JUNE**

**HELP US REACH OUR GOAL**

**DONATE**

<https://www.thepushupchallenge.com.au/fundraisers/ChurchlandsSeniorHighSchool>



**CHURCHLANDS SENIOR HIGH SCHOOL**

## Music: Symphony Orchestra Indian Pacific - James Ledger

The symphony orchestra were privileged to have an opportunity to perform a composition by local composer James Ledger at the Senior Concert earlier this term. Mr Ledger generously gave up his time to come and rehearse the piece with the orchestra over a number of weeks leading up to the performance and conducted the piece on the night.

The students did a great job performing a challenging work, and it was an extra special occasion having the composer himself preparing them and directing them for the performance.



## Formative Assessment In Action - No Hands Up Strategy -

### No Hands Up: Engaging Every Student

One of Dylan Wiliam's key formative assessment strategies is "No hands up except to ask a question." At Churchlands, many teachers are using this to make sure every student is actively thinking—not just the ones who usually raise their hands.

### How it works:

The teacher asks a question, gives everyone time to think, then calls on a student at random. Tools like name spinners or popsicle sticks help ensure a wide range of voices are heard.

### Why it matters:

- Every student knows they could be called on, so everyone thinks.
- It breaks the pattern of relying on "the usual hands."
- It normalises mistakes and thinking out loud—key parts of learning.

Instead of asking for volunteers, we're asking every student to be ready. It's a simple shift that keeps more minds active, more of the time.





# Family and Community Engagement

## FUNDRAISER

### Fundraiser - Support for the Long Road ahead!

On 16 August, a fundraising event “Back to the Drives” will be held at Paul Latham Auditorium in support of our very own Yvette Long (Home Economics teacher).

Yvette was diagnosed with Multiple Sclerosis (MS) in 2023. MS is an autoimmune chronic illness where the immune system attacks the myelin sheath of the nerves in the brain and spine. Symptoms vary greatly from person to person, and unfortunately for Yvette, it affects her walking, balance, and leg strength which you can see, as well as a long list of symptoms you can't see. It stops her from doing many things others take for granted. There is no cure, and medications just slow the inevitable decline. It is relentless, ongoing, and deteriorating.

Years of research has been done by an amazing doctor in America, Dr Burt, who has developed a protocol to halt the progression of MS. In some cases, it has even improved symptoms and put people into remission for decades. It is called HSCT (haematopoietic stem cell transplantation). Although there are trials currently happening in Australia, Yvette does not qualify because she hasn't been diagnosed long enough. Like so many treatments not available here, Yvette will need to travel abroad to access this life-changing procedure—and the sooner it's done, the better the outcome. This comes with a massive expense, as the treatment requires a month-long hospital stay with 24/7 monitoring due to the risk of life-threatening infections from high dose chemotherapy.

Trenton Harris, writer and performer of “Back to the Drives” has kindly offered to perform his show in support of his good friend with 100% of ticket sales going towards her treatment. The show is all about the nostalgia of drive-in movies. It's a jam packed one hour show.

If only we could grab our pjs, pillows and popcorn, but as we can't, grab your tickets instead in support of an amazing teacher, colleague and friend!

Tickets available for purchase via <https://www.trybooking.com/DBUYE>



TRENTON HARRIS PRESENTS

# BACK TO THE DRIVES

Tickets \$30

Back to the Drives is a hilarious, toe-tapping multimedia production celebrating the golden era of drive-in cinemas. Through storytelling, songs, and retro visuals, Trenton brings to life the chaos, charm, and cheeky romance of Friday nights under the stars—complete with milkshake mishaps and fogged-up windcreens. It's a riotous ride down memory lane.

**Saturday, 16 August 2025**

Churchlands Senior High  
Paul Latham Auditorium  
Doors Open At 6:30 Pm

**BOOKING:**  
<https://www.trybooking.com/DBUYE>





**CHURCHLANDS**  
SENIOR HIGH SCHOOL

# Churchlands Bytes

## Library News

Over the last few weeks many of our students have been taking part in our WAYRBA Quiz and being rewarded with House Points and a Treasure chocolate. We have also been exploring the digital jigsaws of some of the covers – all great fun but also important eye focusing skills all linked to improving our reading.

A reminder to all students that the Premiers' Reading Challenge finishes at the end of this month so make sure you log all of what you have read.



## Exams Are Over – How Did the Study Go?

Well done to all our students for completing their exams! We know how much time, effort, and energy you've put into your studies, and we're proud of your dedication.

Now that the exam period is behind us, it's a great time to reflect. What study techniques worked well? What might you do differently next time? Whether you felt calm and prepared or a little overwhelmed, every experience helps you grow as a learner.

Parents – thank you for your ongoing support during this busy time. Your encouragement and routine reminders truly make a difference.

Let's celebrate the effort, not just the results!

## Study Support at Your Fingertips - What Works for You? -

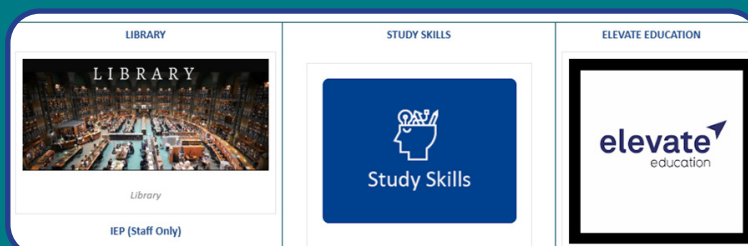
Did you know we have three fantastic online platforms to support your learning? Whether you're preparing for your next assessment or simply want to stay organised, it's important to find what works best for you.

Not sure where to begin? Try these small steps:

- Ask a peer or teacher for tips and guidance.
- Check out the course outline on SEQTA – it can be used as a checklist to track what's been covered and highlight key topics.
- Explore your learning style – understanding how you learn best helps you choose the right strategies.

These resources and more are available on SEQTA and the Library Learning Path – Study Skills page, found under Library Links.

<https://cshs.softlinkhosting.com.au/oliver/learnpath/guide/StudySkills>



## Need Extra Help? Come and See Us!

Students are welcome to make a time with Sally Morris in the Library on Mondays during Homework Club (3pm – 4pm). Together, you can:

- Go through course outlines
- Take the Learning Style quiz
- Start to create a personalised study plan

Recently, some of our students shared their success after discovering study methods that truly worked for them—they found out what worked best for them and how they learn.

## Australian Mathematics Competition

The Australian Mathematics Competition is being held in Week 3 next term. If you'd like to demonstrate your problem-solving skills, please email Mr Carlson [jcarlson@churchlands.wa.edu.au](mailto:jcarlson@churchlands.wa.edu.au) to register your interest. The competition is 75 minutes long and will run during normal class time.

Cost: \$9

Please note: AEP Mathematics students and students in the Mathematics Specialist course in Year 11 & 12 are automatically enrolled and do not need to register.

# AMC.





# Churchlands Bytes

CHURCHLANDS  
SENIOR HIGH SCHOOL

## Learning Support News

July is Disability Pride month. Disability Pride Month is a time to celebrate the achievements and experiences of people with disabilities, and to promote awareness and inclusion. The month also recognises the importance of the disability rights movement and the ongoing fight for equality.

July is  
**Disability  
Pride Month**



## WA Student Assistance Program (WASAP)

This is a reminder that you can claim \$250 under the Government's WA Student Assistance program (WASAP).

Parents and guardians of **all students enrolled at Churchlands SHS are eligible** for this payment.

**You have until 4 July to make an application.**

For full details go to WA Student Assistance Payment at WA Student Assistance Payment

Payments can be claimed through the Service WA app.



## The WA Student Assistance Payment

Helping you get the things you need for your kids. Claim by 4 July 2025.

**\$150**

For each Kindergarten and primary school student

**\$250**

For each secondary school student

Find out more

Claim on the ServiceWA app



## EMPOWERING AUTISTIC YOUTHS THROUGH GENERATIVE AI EDUCATION



GEN AI  
BOOTCAMPS



School Holiday Bootcamps In 2025 And 2026  
For Autistic Youths Aged 13-18 Years

### When

7-10 Jul 2025  
Sep 2025  
Apr 2026  
Jul 2026

### Where

Curtin Uni (Bentley)  
Mandurah  
Bunbury  
Curtin Uni (Bentley)

\* Exact dates and locations to be confirmed

### Eligibility Criteria

An autism diagnosis

### Desirable (but not necessary)

- An interest in AI
- Previous Scratch or block-style knowledge/experience
- Ability to type
- Basic communication skills (verbal or non-verbal)

Please visit [www.genaibootcamps.com.au](http://www.genaibootcamps.com.au) for more information and fill in our EOI form (available on our website) to express interest.

Duration  
4 days  
9:30am - 4pm



WA DATA SCIENCE  
INNOVATION HUB



Australian Government  
Department of Social Services



Curtin University  
AI/ML RESEARCH GROUP (CARD)

## Learning Support News

### Nationally Consistent Collection of Data on School Students with Disability (NCCD)



**NCCD**  
NATIONALLY CONSISTENT COLLECTION OF DATA  
ON SCHOOL STUDENTS WITH DISABILITY

Every year, all schools in Australia participate in the Nationally Consistent Collection of Data on School Students with Disability (NCCD). The NCCD process requires schools to identify information already available in the school about supports provided to students with disability. These relate to legislative requirements under the Disability Discrimination Act 1992 and the Disability Standards for Education 2005, in line with the NCCD guidelines (2019).

Further information about the NCCD can be found on the [NCCD Portal](https://www.nccd.edu.au) (<https://www.nccd.edu.au>).

Please also see Fact Sheet for parents, guardians and carers [nccd\\_parent\\_fact\\_sheet\\_english\\_0.pdf](#)

If you have any questions about the NCCD, please contact The Learning Support Program Coordinator, Claire Shoebridge, [cshoebridge@churchlands.wa.edu.au](mailto:cshoebridge@churchlands.wa.edu.au) by the end of Week 1, Term 3.

## Congratulations

Congratulations to Ursula Sadlo, Year 12, on being selected as a member of the 2025 Gymnastics WA State Team. Ursula will be competing at the Australian Gymnastics Championships, held in Brisbane, in early July. Good luck Ursula.



Congratulations to Jaden Exeter, Year 10, for being selected to represent Western Australia in the 2025 Basketball 16s Boys Championship.

The competition will be held in Moreton Bay, Queensland, from late July through to early August. Good luck Jaden.



Congratulations to Leilah Lavea on her recent achievements in Judo. Earlier this year, Leilah received a gold medal at the Sydney International Open and most recently on Sunday, 8 June, she placed first at the 2025 National Judo Championships held at the Gold Coast Sport & Leisure Centre in Carrara, Queensland. Well done Leilah.





**CHURCHLANDS**  
SENIOR HIGH SCHOOL

# Churchlands Bytes

## ACADEMIC EXTENSION PROGRAM

### YEAR 7 IN 2026

If your child is going into Year 7 in 2026, you can apply for our school-based Academic Extension Program (AEP).

Testing will take place at Churchlands Senior High School, 20 Lucca Street, Churchlands, on Saturday, 23 August, at 9.00 am.

To apply, an online application form is available via our website:  
[www.churchlands.wa.edu.au/learning/academic-extension-program](http://www.churchlands.wa.edu.au/learning/academic-extension-program)

Further information:  
T: 9441 1700  
W: [Churchlands.wa.edu.au](http://Churchlands.wa.edu.au)

  /churchlands.shs



CHURCHLANDS  
SENIOR HIGH SCHOOL

**Applications  
close  
Monday  
4 August 2025**

**Testing  
Saturday  
23 August 2025**

### *Sporting Programs offered at CSHS*

**AFL Program**



**Swimming**



Entry into our Sporting Programs (Year 7 in 2026) is through a selection process. Applications are now being taken – please visit our website for further information. Trials will be conducted in Term 3.

## - Reminder for Students -

Students are reminded that they are still required to  
**Sign In and Out** of their respective  
**Student Services**, even if parents have notified the school of their absence.

**- Thank You -**

## Important

**Drop Off and Pick Up  
Reminders**



Parking around the school can become quite congested. For the safety of your children and our staff, please see below for a safer drop off and pick up:

**Sports Hall** - STAFF ONLY

**Front Main Administration:** STAFF with some Visitor parking (not suitable for drop off/pick up).

**Memory Close:** STAFF & Student 'P' Platers ONLY

For parents wanting to drop off/pick up students, please use either the Hale Road Drop & Ride near the tennis courts or Lucca Street (please be mindful of other students and buses when entering/exiting).

Parents are reminded that parking in bus bays is not allowed during the times specified on the relevant signage. The potential for accidents involving our students as well as the cars and buses is a significant concern.



**Churchlands Senior High School  
- Uniform Shop -**

**Winter Trading Hours**  
effective 3rd June 2025

<b>Tuesday</b>	<b>8.30am to 4.00pm</b>
<b>Thursday</b>	<b>1.30pm to 4.30pm</b>



# Family and Community Engagement




Download



SCAN HERE (SOCCER)



(BASKETBALL)



## SOCIAL SOCCER & BASKETBALL GAMES

Beginners welcome | Weeknights and Weekends

» Make New Friends    » Friendly & Social Games    » Keep Fit and Have Fun!

For more information or to reserve your spot please contact us below

 [info@ahsport.net](mailto:info@ahsport.net)     [www.ahsport.net](http://www.ahsport.net)

 0448894457     6 Lucca Street, Churchlands 6018




Download



SCAN HERE



## SOCIAL BADMINTON GAMES

Shuttlecocks included

✓ Beginners welcome

For more information or to reserve your spot please contact us below

 [info@ahsport.net](mailto:info@ahsport.net)     0448894457

 [www.ahsport.net](http://www.ahsport.net)     6 Lucca Street, Churchlands 6018

» Make New Friends    » Friendly & Social Games    » Keep Fit and Have Fun!

**RU HANGRY** & MILO TOASTIES

8.15-9AM

EVERY TUE & FRI

**BREAKFAST!**



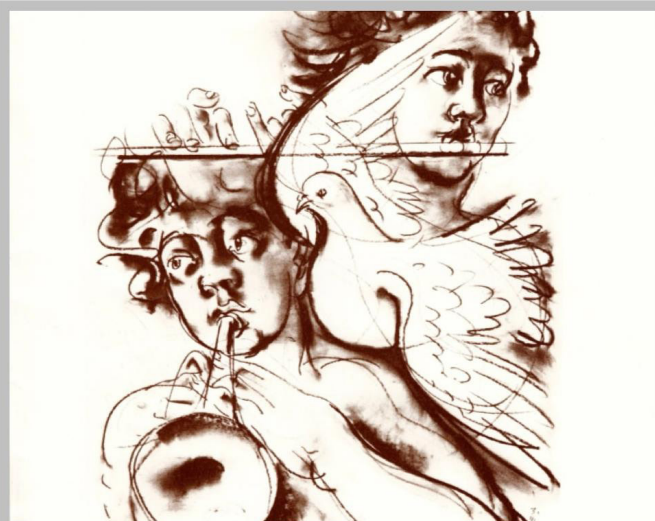
CHURCHLANDS  
SENIOR HIGH SCHOOL

FREE FOOD! FREE FOOD! FREE FOOD!



MUSIC GAMES  
+  
A GOOD START  
TO YOUR DAY!  
ALL WELCOME

## Geneva Tour 1985 40 year reunion



20 JULY 2025  
2-6pm

Taryn Fiebig Concert  
Hall foyer, CSHS

Join us for an afternoon of  
reminiscing, catching up,  
celebrating, and hanging out with  
good old friends!

Paid Bar by the CSHS Music  
Parents Association.  
Bring snacks to share  
RSVP  
[cshsgenevareunion@gmail.com](mailto:cshsgenevareunion@gmail.com)

Find our group on Facebook

# Family and Community Engagement

## What does my voluntary contribution get my child? Celebrating the Impact of Churchlands P&C!

At Churchlands Senior High School, we are incredibly fortunate to have a proactive and passionate Parents & Citizens' Association (P&C) that consistently goes above and beyond to support our students, staff, facilities and wider school community.



**CHURCHLANDS**  
SENIOR HIGH SCHOOL

**Parents &  
Citizens  
Association  
Incorporated**

P&C has two main sources of funding: the earnings of the School Uniform Shop and parents' voluntary contributions. Another important contribution is the dedication and generous time contribution of volunteers staffing the P&C and its sub-committees, which continues to be instrumental in enhancing our school's facilities, resources and student opportunities.

From these sources, over the past few years, the Churchlands SHS P&C has funded and facilitated a wide range of impactful projects, each contributing to the enriching and well-rounded educational experience our students enjoy today.

### Recent Projects and Initiatives Funded by the P&C

- Upgrade to Air-Conditioning systems in food rooms and the gym
- School entry upgrade and smooth access to the Taryn Fiebig Concert Hall from the Memory Close Carpark
- The Churchlands SHS Chaplaincy Program
- Upgrade to Design and Technology facilities
- Welcome Barbeque for Year 7 students
- Student Services End of Semester Prizes for each year Group
- School Annual Jazz Concert Sound System
- The Concert Hall Ticketing Desk and Café Improvements and upgrades to the Concert Hall and Music Department
- The Annual Churchlands Art Exhibition
- The Uniform Shop and the quality of the school uniforms
- Churchlands Quiz Nights
- Collaboration
- Communication and linkages

### Other strategic projects

- Over the years, P&C has supported many strategic projects:
- Costumes and Equipment for Drama Productions
- STEM Equipment
- Library Upgrades
- Sports Uniforms and Team Equipment
- Outdoor Fitness Equipment
- Mental Health and Resilience Programs
- Shade Structures and Outdoor Seating
- Technology in Classrooms

If you have an idea for a strategic project, please let us know!  
([secretary@churchlandspc.com.au](mailto:secretary@churchlandspc.com.au))

### Get Involved!

We are always looking for new members, volunteers and fresh ideas. Whether you can offer time, expertise, networking or simply your company and a willingness to help, your contribution will directly benefit your children and their friends. Together, we can continue building an inspiring environment where every student thrives.

And if you don't feel like getting personally involved, please pay your annual parent contribution, or feel free to donate more if you can. Other than joining the Committee or attending meetings in person, this is the best way you can support the P&C and its work. Thank you so much.

### Thank you!

I am deeply grateful to every P&C member—past and present—who has given their time, energy, and creativity to fundraise, plan events, and advocate for improvements. The ripple effect of your work is seen every day in the learning, laughter, and growth of our students.

From sausage sizzles and quiz nights to major capital contributions—thank you, Churchlands SHS P&C, for being the heart behind so much of what makes our school exceptional.

**Dr Danijela Kambaskovic-Schwartz**  
President, Churchlands SHS P&C



**CLASS OF 2024**

**Year 13 Sandowner**


**FRIDAY 28 NOVEMBER 2025 @ 4.00 PM**

**WE WELCOME YOU BACK TO SCHOOL. COME JOIN US...**


**SAVE THE DATE**

 **CHURCHLANDS**  
SENIOR HIGH SCHOOL

 Churchlands Senior High School  
ALUMNI



**CHURCHLANDS**  
SENIOR HIGH SCHOOL



*Save The Date*  
*Save The Date*  
*Save The Date*

**CLASS OF 1975**  
**50 YEAR REUNION**  
**Wednesday 22 October 2025**  
**10 am**

at Churchlands SHS, 20 Lucca Street, Churchlands