

# Cello Excerpts 2021 – Easy

## 1. Sarabande – Pachelbel (arranged by Chin)

Andante ♩ = 60

*f*

*p*

*f*

*p*

*mf*

## 2. The Piper O'Dundee (Traditional Scottish)

Allegro Moderato ♩ = 116

*f*

*p*

# Cello Excerpts 2021 – Medium Easy

## 1. J.S. Bach – Brandenburg Concerto No. 3, 1<sup>st</sup> movt.

Allegro ♩ = 50

The musical score for the first excerpt is written for Cello in G major, 3/4 time, and marked Allegro with a tempo of 50 beats per minute. It consists of four staves of music. The first staff begins with a quarter rest followed by a series of eighth and sixteenth notes. The second staff continues with a similar rhythmic pattern. The third staff features a mix of eighth and sixteenth notes. The fourth staff starts with a quarter rest, followed by eighth notes and a final quarter note.

## 2. Black River Ballad – Doriz Gazda

Moderato ♩ = 88

The musical score for the second excerpt is written for Cello in G major, 3/4 time, and marked Moderato with a tempo of 88 beats per minute. It consists of three staves of music. The first staff begins with a quarter rest, followed by a series of eighth and sixteenth notes. The second staff continues with a similar rhythmic pattern. The third staff features a mix of eighth and sixteenth notes.

b) Danse de la Fée-Dragée

Andante non troppo

4 Soli pizz.  
 11  
 26  
 11  
 pp  
 p  
 sf pp sf pp sf pp sf pp sf pp  
 Celesta Solo pp  
 A  
 arco  
 B a punto d'arco  
 C  
 pizz.  
 f

c) Danse russe Trepak

Tempo di trepak, molto vivace

arco  
 12  
 28  
 34  
 48  
 52  
 68  
 74  
 p  
 p  
 mf ff mf sf ff mf  
 cresc.  
 sf f  
 sf sf  
 stringendo  
 Prestissimo  
 sempre fff

# Symphony No. 8 in B minor

## "Unfinished"

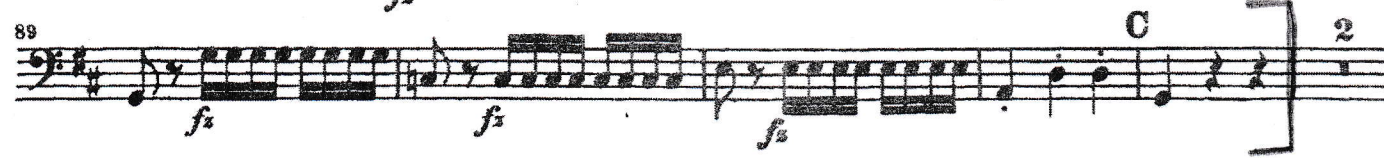
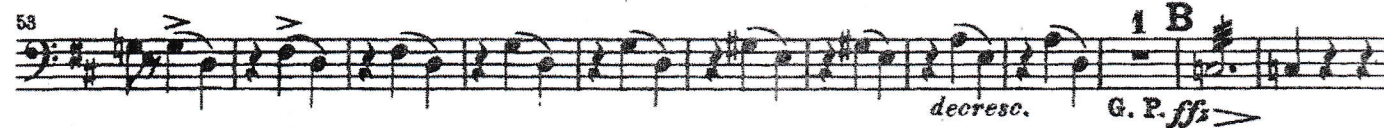
Violoncello

Franz Schubert

D. 759

Allegro moderato

pizz.



Tchaikovsky Serenade for Strings - Symphony

IV. FINALE. (TEMA RUSSO.)

Andante. (♩ = 72.)

Cello.

12 *p.* *p.* *p.*

*pp* *Riten.* *alzate sordini*

Allegro con spirito. (♩ = 144.)  
senza sordini

*p* **3**

*pp* *mf* *f*

*ff marcato* *ff*

*f* *mf* **1** **2**

**B** *mf con anima*

*f* *f*

*f*

*f* *foroso*

Beethoven — Symphony No. 9  
Violoncello e Contrabasso

2

92

*cresc. div.* *f* *p cresc.* *più cresc.*

*cresc.* *f* *più cresc.*

Measures 92-100. The upper staff features a melodic line with a **C** time signature change at measure 95. Dynamics include *cresc. div.*, *f*, *p cresc.*, and *più cresc.*. The lower staff provides harmonic support with *cresc.* and *f*.

101

*ff* *ff* *pp*

Measures 101-110. Both staves feature a rhythmic pattern of eighth notes. Dynamics include *ff* and *pp*. A **2** time signature change occurs at measure 105.

111

*pizz.* *pp* *sempre pp*

Measures 111-116. The upper staff has a *pizz.* marking. Dynamics include *pp* and *sempre pp*.

117

*arco* *pp* *cresc.* *cresc.*

Measures 117-126. The upper staff has an *arco* marking. Dynamics include *pp*, *cresc.*, and *cresc.*.

531

**S** *ff* *sempre ff* *sempre ff* *sempre ff*

Measures 531-540. The upper staff has an **S** marking. Dynamics include *ff* and *sempre ff*.

541

*f* *ff* *ff*

Measures 541-550. Dynamics include *f*, *ff*, and *ff*.