



School Curriculum  
and Standards  
Authority

———— Year 10 ————  
**Information Handbook  
2026**



## Acknowledgement of Country

Kaya. The School Curriculum and Standards Authority (the Authority) acknowledges that our offices are on Whadjuk Noongar boodjar and that we deliver our services on the country of many traditional custodians and language groups throughout Western Australia. The Authority acknowledges the traditional custodians throughout Western Australia and their continuing connection to land, waters and community. We offer our respect to Elders past and present.

## Updates

In this edition of the *Year 10 Information Handbook 2026* updates made during the year will be marked with double lines and/or a document icon that includes the date of the change.



© School Curriculum and Standards Authority, 2026

This document – apart from any third-party copyright material contained in it – may be freely copied, or communicated on an intranet, for non-commercial purposes in educational institutions, provided that the School Curriculum and Standards Authority (the Authority) is acknowledged as the copyright owner, and that the Authority’s moral rights are not infringed.

Copying or communication for any other purpose can be done only within the terms of the *Copyright Act 1968* or with prior written permission of the Authority. Copying or communication of any third-party copyright material can be done only within the terms of the *Copyright Act 1968* or with permission of the copyright owners.

Any content in this document that has been derived from the Australian Curriculum may be used under the terms of the [Creative Commons Attribution 4.0 International licence](#).

### School Curriculum and Standards Authority

Street address: 303 Sevenoaks Street CANNINGTON WA 6107

Postal address: PO Box 816 CANNINGTON WA 6987

Phone: (08) 9273 6300

General email: [info@scsa.wa.edu.au](mailto:info@scsa.wa.edu.au)

Web: [www.scsa.wa.edu.au](http://www.scsa.wa.edu.au)

Cover image: nadia\_bormotova, 2024  
2026/25348[v2]

## Guide to key abbreviations

Abbreviation	Full term
ATAR	Australian Tertiary Admission Rank
COAT	Common oral assessment task
DTWD	Department of Training and Workforce Development
EAL/D	English as an Additional Language or Dialect
EST	Externally set task
NAPLAN	National Assessment Program – Literacy and Numeracy
OLNA	Online Literacy and Numeracy Assessment
RTO	Registered training organisation
SPEA	School-based practical external assessment
SRMS	Student Records Management System
the Authority	School Curriculum and Standards Authority
TISC	Tertiary Institutions Service Centre
TPEP	Tertiary preparation endorsed program
VET	Vocational education and training
WACE	Western Australian Certificate of Education
WASSA	Western Australian Statement of Student Achievement
WASN	Western Australian student number

Student name:

WA student number:

This handbook contains information for students currently enrolled in Year 10. It provides a reference point for students preparing to work towards the WACE.

Further information is also available from the School Curriculum and Standards Authority (the Authority) website. You should also speak with staff at your school, including counsellors, year coordinators, VET coordinators and deputy principals for personalised advice.



Graphic: nadia\_bormotova, 2023

## Foreword

This handbook provides information for Year 10 students in 2026 who are working towards completion of a Western Australian Certificate of Education (WACE) in Year 12 in 2028. It contains information about course types, examples of course combinations for WACE achievement, general advice for students, and further resources. If you already have some information about studying in Years 11 and 12, you should confirm what will be involved for students achieving a WACE in 2028. This handbook is a starting point for that process.

Students entering Year 11 in 2027 must meet a number of requirements in order to be awarded a WACE at the end of Year 12 in 2028. These include:

- a set of general requirements about course completion
- demonstrating the literacy and numeracy standard
- the breadth and depth requirement and the achievement standard requirement.

Further information about the WACE requirements can be found in this handbook.

### Confirm your sources

Please always check your sources when seeking advice about what you need to do to achieve a WACE. It is important to make decisions based on information that is current, accurate and relevant. The School Curriculum and Standards Authority (the Authority) began a process of WACE Refreshment in 2023 to support students to engage with the courses and programs that are personally challenging and best meet your needs as lifelong learners. There are some changes to WACE completion in 2028 connected with this process. As you read this handbook and the resources published on the Authority website, you need to bear these changes in mind.

A WACE Refreshment that will support choosing to enrol in Australian Tertiary Admission Rank (ATAR) courses is the C grade equivalent. The Board of the Authority determined that a student who achieves a D grade for any pair of Year 12 ATAR course units and a moderated written school mark or ATAR course written examination mark of approximately 40 will receive a C grade equivalent for each of those pairs of units, which can contribute to meeting WACE requirements. This C grade equivalent will support students who have taken on the challenge of an ATAR course to meet the WACE requirement of 'at least six C grades (or equivalents) in Year 12 units'. The C grade equivalent will be applied to as many Year 12 ATAR courses as relevant for a student. This C grade equivalent reflects the pitch of the course content and the rigour of the teaching, learning and assessment programs of Year 12 ATAR courses.

The teachers and counsellors at your school will have up-to-date information about the WACE requirements that are currently in place. Your family and friends who have completed Years 11 and 12 recently will have a sense of what the final years of secondary schooling involve. That understanding is always important, but keep in mind that there are changes to the WACE requirements and the courses offered because of the WACE Refreshment. The Authority provides further information through its website and communications with schools. The Authority will continue to update its information as changes come into effect. For example, the description of the WACE requirements listed here for 2028 are slightly different from those currently provided for the class of 2026 on the Authority website.

## Making choices

The move into Years 11 and 12 is a significant step and it is important to make good choices when selecting your courses as you prepare for the world beyond school. Choosing courses that sit well with your abilities, interests and aspirations will help you maintain your focus throughout Years 11 and 12. Think about the subjects you like and are good at. Taking time to talk with the people who know you – with an awareness of your strengths and interests, along with the areas where you can improve – can always be useful when you are making choices about your future.

When making choices, you may need to compromise and be flexible. Always consider your goals. Think about your options as well. Know that you will have options for the different opportunities that may arise over the next few years. Years 11 and 12 are about building the groundwork for your future beyond school. You may not know precisely what you want to do when you finish school, but having a goal, making a plan to achieve it and putting that plan into action will help you keep the focus you need in Years 11 and 12.

I wish you all the best as you move into Years 11 and 12. November 2028 and the end of Year 12 will be here before you know it. Stay focused on your goals and keep trying to do your best. Your effort will help you to develop knowledge and understanding, as well as build attributes of a strong work ethic and resilience that you will take into your life beyond school.

**JUANITA HEALY**  
**EXECUTIVE DIRECTOR**  
**SCHOOL CURRICULUM AND STANDARDS**



Graphic: nadia\_bormotova, 2024

## WACE Refreshment

The Board of the Authority approves modifications to the WACE from time to time. This is to ensure that the WACE is maintained as a robust, rigorous and contemporary senior certificate that aligns with others across the nation and internationally.

Following its December 2022 meeting, the Board initiated a WACE Refreshment process in response to the changing landscape of education and society. The process acknowledges emerging demands on senior secondary education and the impact of social, economic and global conditions on young people. The WACE Refreshment is ongoing and will be implemented over the coming years.

The WACE Refreshment focuses on:

- the range of courses and programs to cater for diverse student needs and pathways
- maximising access to the WACE, to better accommodate students with disability or who are disengaged from schooling
- strengthening the way in which quality vocational education and training (VET) and endorsed programs are recognised
- clearly reporting student capabilities, such as critical and creative thinking, digital literacy and intercultural and ethical understanding.

Details of WACE Refreshments that relate to students in Year 12 in 2028 are incorporated into the information in this handbook.

### C grade equivalent for Year 12 ATAR courses

A WACE Refreshment introduced in 2025 for Year 12 students completing the WACE is the C grade equivalent.

Students who achieve a D grade for any completed Year 12 ATAR course and a moderated written school mark or ATAR course written examination mark at or above the specified cut point of approximately 40, as determined by the Authority for each course, receive a C grade equivalent for that pair of units.

The C grade equivalent can contribute to meeting WACE requirements, if all course completion requirements for the WACE have been met for that course. The C grade equivalent reflects the pitch of the course content and rigour of the teaching, learning and assessment programs of Year 12 ATAR courses.

The C grade equivalent will support students who take a Year 12 ATAR course to meet the WACE requirements of a 'minimum of six C grades (or the equivalent) in Year 12 units'. The C grade equivalent will be applied to as many Year 12 ATAR courses as relevant for a student.

The school grade of a D does not change. The C grade equivalent is shown on the Western Australian Statement of Student Achievement (WASSA) as a D\* for the school grade with a note: 'D\* indicates a C grade equivalent was applied for this course'.

Frequently asked questions about the C grade equivalent are available on the Authority website at <https://senior-secondary.scsa.wa.edu.au/certification/wace> and <https://senior-secondary.scsa.wa.edu.au/certification/wassa>.

### Vocational education and training (VET) and endorsed programs

The Authority has consulted widely with a range of stakeholders, including students, school principals across different demographics and metropolitan and regional locations, school systems and sector bodies, industry training councils, Technical and Further Education (TAFE) colleges,

private training providers, regulatory and policy setting bodies in the training sector, and representatives from the tertiary sector.

Two WACE Refreshments introduced for Year 12 students completing the WACE relate to vocational education and training (VET) and Tertiary preparation endorsed programs (TPEPs – formerly known as university developed endorsed programs).

1. Diploma-level qualifications, including Australian Qualifications Framework (AQF) Level 5 and higher qualifications, will not receive unit equivalence towards WACE achievement from 2027 and they will not be recorded on the student’s Western Australian Statement of Student Achievement (WASSA).

From 2028, the Authority will only provide unit equivalents towards WACE achievement for completed or partially completed Certificate IV qualifications delivered by identified registered training organisations (RTOs) that appear on the *Certificate IV Specified List* available on the Authority website at <https://senior-secondary.scsa.wa.edu.au/vet/all-about-vet>.

Frequently asked questions about Diploma-level and Certificate IV qualifications are available on the Authority website at <https://senior-secondary.scsa.wa.edu.au/vet/all-about-vet>.

2. As ATAR courses best prepare students for university study, from 2027, students who select a TPEP to gain unit equivalence towards WACE will be required to complete at least one Year 12 ATAR course. The decision reflects the expectation that students selecting a TPEP have aspirations for university entrance. Further information about TPEPs, including frequently asked questions, is available on the Authority website at <https://senior-secondary.scsa.wa.edu.au/vet/endorsed-programs>.

Students completing Year 12 in 2028 must take these changes into consideration when selecting their courses for WACE achievement.

It may interest you to know that the WACE Refreshment includes the addition of more information on the WASSA. This is not about adding more requirements to complete a WACE but is a way of acknowledging students’ efforts and engagement with their learning.



Graphic: nadia\_bormotova, 2023

## The Western Australian Statement of Student Achievement

The Western Australian Statement of Student Achievement (WASSA) is provided to each Year 12 student at the completion of their senior secondary schooling, which typically takes two years. The WASSA provides a formal record of what a student leaving school at the end of the Year 12 has achieved as a result of their school education in Western Australia.

The WASSA formally records, as relevant:

- achievement of WACE requirements
- achievement of the literacy (reading and writing) standard
- achievement of the numeracy standard
- achievement of any exhibitions and awards
- school grades, school marks and combined scores in ATAR units\*
- school grades and school marks in General and Foundation units\*
- completed Preliminary units
- completed VET industry specific courses
- completed VET qualifications and VET units of competency
- completed Accredited Courses from the Accredited Course Recognition Status List
- completed Department of Training and Workforce Development (DTWD) funded VET skill sets
- completed endorsed programs
- number of community service hours undertaken (if reported by the school).

\*In Year 12, Units 3 and 4 are reported as a year-long course. In Year 11, Units 1 and 2 are typically reported as a year-long course but may be reported separately.

You will receive a WASSA if you have completed any of the listed units, courses, programs or achievements.

## The Western Australian Certificate of Education

The senior secondary certificate of education issued in Western Australia to Year 12 students who meet the specified requirements is the Western Australian Certificate of Education (WACE).

The full WACE requirements are published in the [WACE Manual](#) and on the Authority website. It is important to read the full set of explanatory notes for your year of completion.

### WACE achievement requirements

You will receive a WACE if you meet all of the WACE requirements stated in the [WACE Manual](#) at the time of completion.

To meet the WACE achievement requirements, **you must:**

- demonstrate a minimum standard of literacy and a minimum standard of numeracy
- complete a minimum of 20 units, or equivalents as described below
- complete
  - at least four Year 12 ATAR courses,\* **or**
  - at least five Year 12 General courses<sup>†</sup> (or a combination of General and up to three Year 12 ATAR courses) or equivalent,<sup>‡</sup> **or**
  - a Certificate II<sup>§</sup> (or higher<sup>||</sup>) VET qualification<sup>#</sup> in combination with ATAR, General or Foundation courses.

\*In the context of ATAR courses in the WACE, the term ‘complete’ requires a student to sit the ATAR course examination or have an approved *Sickness/Misadventure Application* for not sitting the examination in that course. A student who did not sit the ATAR course examination and does not have an approved *Sickness/Misadventure Application* will not have a course mark or grade recorded on their WASSA, nor will they receive an ATAR course report.

Note: for ATAR courses with practical components, students must complete both the written and practical examinations. The Physical Education Studies Year 12 ATAR course includes a school-based practical external assessment (SPEA) that a student must sit to satisfy the completion for the course (see the [WACE Manual](#) for further information).

†Foundation courses do not contribute to meeting the WACE achievement requirement with this option. Where a student is not undertaking a program of study of either at least four Year 12 ATAR courses or at least five Year 12 General courses and/or ATAR courses, these students must also complete a Certificate II or higher to achieve the WACE. The General pathway for WACE achievement is not available to students enrolled in the WACE at offshore international schools.

‡Up to two unit equivalents from endorsed programs can be used to meet this requirement.

§In the context of VET in the WACE, the term ‘complete’ requires that a student has been deemed competent in all units of competency that make up a full qualification.

||The partial completion of a Certificate III or a Certificate IV qualification that is on the *Certificate IV Specified List* may meet this requirement according to predetermined criteria (see the [WACE Manual](#) for further information).

From 2027, a student who completes or partially completes a Diploma-level qualification will not receive unit equivalents for these qualifications towards WACE achievement. Any Diploma-level qualification completed in 2027 and beyond will not be recorded on the student’s WASSA (see Section 4 of the *WACE Manual*).

From 2028, the Authority will only provide unit equivalents from Certificate IV level qualifications where these qualifications appear on the Authority’s *Certificate IV Specified List*.

#VET qualifications (Australian Qualifications Framework (AQF) levels II and higher) must be part of a national endorsed training package or relevant accredited course with an **industry** focus recognised by the Authority identified on the Accredited Course Recognition Status List, which may be accessed from the Authority website at <https://senior-secondary.scsa.wa.edu.au/vet/wace-recognition-of-vet-accredited-courses>.

## Literacy and numeracy standard requirement

You must demonstrate the minimum literacy and numeracy standard based on skills regarded as essential for individuals to meet the demands of everyday life and work. This standard is equivalent to Level 3 of the *Australian Core Skills Framework* (<https://www.dewr.gov.au/skills-information-training-providers/australian-core-skills-framework>).

For the WACE literacy standard, a student must demonstrate the minimum standard of literacy either by successfully completing the reading and writing components of the Authority’s Online Literacy and Numeracy Assessment (OLNA), or by prequalifying through achieving the required level or higher in the reading and writing tests of the Year 9 National Assessment Program – Literacy and Numeracy (NAPLAN).

For the WACE numeracy standard, a student must demonstrate the minimum standard of numeracy by successfully completing the numeracy component of the OLNA, or by prequalifying through achieving either the required level or higher in the numeracy test of the Year 9 NAPLAN.

### Sitting the OLNA

If you do not meet the standard in Year 10 (if you sit in the Term 4 Year 9 window, this counts as one of your Year 10 sits), you must sit one of the Semester 1 windows in Year 11. Note: if you are enrolled in a Foundation course and you demonstrate the literacy and/or numeracy standard in Term 2 Window B, you will also be required to move to a General or ATAR course for Semester 2 once results are released in Term 3.

In some circumstances, schools may apply to the Authority seeking permission for a student to remain in the Foundation course/s by completing the Application for exemption from enrolment eligibility criteria for Foundation units – Form C available on the Forms page of the Authority website.

If you do not achieve a WACE while at school because you do not demonstrate the standard in one or more of the reading, writing or numeracy components, you can apply to re-sit the necessary test/s. If you subsequently demonstrate the literacy (reading and writing) and numeracy standard, and meet all the WACE requirements current at the time, you will be issued with a WACE.

### International and mature-age students

If you are an international and/or mature age student, you are required to sit the OLNA in one of the first two windows available to you. If you **have not** prequalified through NAPLAN and choose **not** to sit the OLNA, you will **not** qualify for the WACE.

### Adjustments

Equitable access adjustment provisions for timed assessments are available for students who have a condition/s that may significantly limit their capacity to participate in the OLNA. For information about the adjustment provisions, see <https://senior-secondary.scsa.wa.edu.au/assessment/olna/disability-adjustments>.

If you are a student with disability or have additional needs and choose not to sit the OLNA, or have not demonstrated the standard through your performance in Year 9 NAPLAN, you will **not** qualify for the WACE. It is important that you and your parents/guardians/carers discuss your options with appropriate staff members at your school.

The OLNA (or prequalification through Year 9 NAPLAN) is how the literacy standard and numeracy standard is demonstrated. You cannot meet this WACE requirement through your completion of English or Mathematics courses.

After discussions with your parents/guardians/carers, and the school, you may choose not to sit the OLNA. However, this means that you will not achieve a WACE.

### Breadth and depth requirement

To meet the breadth and depth requirement **you must**:

- complete a minimum of 20 units, which may include unit equivalents attained through VET and/or endorsed programs. This requirement must include at least: (Explanatory notes 1, 2, 3, 4, 5)
  - a minimum of ten Year 12 units, or the equivalent
  - four units from an English learning area course, post-Year 10, including at least one pair of Year 12 units from an English learning area course

- one pair of Year 12 units from each of List A (arts/languages/social sciences) and List B (mathematics/science/technology).

### Achievement standard requirement

To meet the achievement standard requirement **you must**:

- achieve at least 14 C grades or higher (or the equivalent) in Year 11 and Year 12 units, including at least six C grades (or equivalents) in Year 12 units. <sup>(Explanatory notes 2, 5 and 6)</sup>
- complete:
  - at least four Year 12 ATAR courses <sup>(Explanatory note 5)</sup>, **or**
  - at least five Year 12 General courses <sup>(Explanatory note 7)</sup> (or a combination of General and up to three Year 12 ATAR courses <sup>(Explanatory note 5)</sup>) or equivalent <sup>(Explanatory note 8)</sup>, **or**
  - a Certificate II VET qualification (or a Certificate III, or a Certificate IV qualification that is on the *Certificate IV Specified List*), <sup>(Explanatory notes 9 and 10)</sup> in combination with ATAR, General or Foundation courses.

Explanatory notes relating to WACE requirements for 2026

1. The breadth requirement can be met through ATAR, General and Foundation courses. The depth requirement can be met through ATAR, General, VET industry specific and Foundation courses, VET credit transfer and endorsed programs.
2. Of the 20 units required for a WACE, up to a maximum of four Year 11 units and four Year 12 units may be awarded as unit equivalents by substituting VET qualifications and/or endorsed programs. A student may choose to study VET qualifications and/or endorsed programs and may be awarded unit equivalents by substituting VET qualifications (up to a total of eight units) **or** using endorsed programs (up to a total of four units) **or** using a combination of VET and endorsed programs (up to a total of eight units, but with a maximum of four units with endorsed programs – two in Year 11 and two in Year 12).

A C grade equivalent will be applied for the pair of units in a Year 12 ATAR course by the Authority where a student has achieved a D grade and also achieved a moderated written school mark or ATAR course written examination mark at or above a specified cut point of approximately 40. There is no maximum number of Year 12 C grade equivalents that a student can receive.

3. Students are able to substitute the minimum number of course unit requirement with unit equivalents achieved through the completion of AQF VET qualifications at Certificate I, II, III, and from 2028, Certificate IV level qualifications, where these qualifications appear on the Authority's *Certificate IV Specified List*, and/or endorsed programs.
4. Students can repeat units. However, those units that have the same unit code, e.g. AEENG, and are repeated, do not contribute to the WACE requirements more than once.  
Note: students who complete ATAR Units 3 and 4 prior to Year 12 and sit the examination cannot repeat these units until after they leave school at the completion of Year 12.
5. Students enrolled in a Year 12 ATAR course must sit the external examination in that course. If students do not sit an ATAR course examination and do not have an approved *Sickness/Misadventure Application* for not sitting the examination in that course (or approved absence for a SPEA), the pair of units completed in that year will not contribute towards any of the WACE requirements. Students who do not sit the ATAR course examination (or SPEA) will not have a course mark or grade recorded on their WASSA, nor will they receive an ATAR course report. For ATAR courses with practical components,

students must complete both the written and practical examinations (and SPEA, where applicable).

6. Both VET qualifications and endorsed programs can indirectly contribute to the WACE standard requirement of a C grade in at least 14 units. A C grade in a maximum of eight units (four in Year 11 and four in Year 12) can be replaced by unit equivalents from VET qualifications and/or endorsed programs. Of these eight unit equivalents, a maximum of four can be from endorsed programs (two in Year 11 and two in Year 12).
7. Foundation courses do not contribute to meeting the achievement standard with this option.
8. The completion of two or more endorsed program unit equivalents may be substituted for up to one General course for this requirement.
9. In the context of VET in the WACE, the term 'complete' requires that a student has been deemed competent in all units of competency that make up a full qualification.
10. The partial completion of a Certificate III, or a Certificate IV level qualification, where these qualifications appear on the Authority's *Certificate IV Specified List*, may meet this requirement according to predetermined criteria.
11. The literacy and numeracy standard can be met either through the Online Literacy and Numeracy Assessment (OLNA) or by achieving the required level in the associated components of reading, writing or numeracy in the Year 9 NAPLAN tests. Students undertaking the OLNA will be required to satisfy both the reading and writing components in order to demonstrate the minimum WACE literacy standard.

If a student does not demonstrate the literacy and numeracy standard by the time they exit secondary school, they can apply to the Authority to re-sit the assessment at any age.

Note: the WACE requirements may change over time and students studying towards the achievement of the WACE after they leave school will be required to meet the WACE requirements current at the time of the completion of their studies.

## Unit equivalents

The WACE requirement for at least 20 units and at least 14 C grades may be met partly through unit equivalents. These are units within VET and endorsed programs of at least 55 nominal hours. They are known as unit equivalents because they are considered equivalent to one unit of a Year 11 or Year 12 course.

You can be awarded unit equivalents through VET qualifications undertaken as VET credit transfer and/or endorsed programs. The maximum number of unit equivalents available is eight units – four Year 11 units and four Year 12 units. You may be awarded:

- up to eight unit equivalents through completion of VET qualifications, **or**
- up to four unit equivalents through completion of endorsed programs, **or**
- up to eight unit equivalents through completion of a combination of VET qualifications and endorsed programs, but with endorsed programs contributing no more than four unit equivalents (two Year 11 units and two Year 12 units).

For VET qualifications from 2028:

- a Certificate I is equivalent to two Year 11 units
- a Certificate II is equivalent to two Year 11 and two Year 12 units
- a Certificate III is equivalent to two Year 11 and four Year 12 units

- a Certificate IV level qualification where these qualifications appear on the Authority's *Certificate IV Specified List* is equivalent to two Year 11 and four Year 12 units
- a partially completed Certificate III is equivalent to two Year 11 and two Year 12 units (credit is allocated only if the criteria for partial completion are met). (See the [WACE Manual](#) for further information.)
- a partially completed Certificate IV level qualification where these qualifications appear on the Authority's *Certificate IV Specified List* is equivalent to two Year 11 and two Year 12 units (credit is allocated only if the criteria for partial completion are met). (See the [WACE Manual](#) for further information.)

For endorsed programs, unit equivalence is identified on the Authority's approved list of endorsed programs available at <https://senior-secondary.scsa.wa.edu.au/vet/endorsed-programs>.

The Authority's *Certificate IV Specified List* is available at <https://senior-secondary.scsa.wa.edu.au/vet/all-about-vet> under WACE Refreshments – Certificate IV and Diploma qualifications.



Figure 1. WACE requirements in 2028

## 1. General requirements

You must:

- demonstrate a minimum standard of literacy (reading and writing) and a minimum standard of numeracy
- complete a minimum of 20 units, or equivalents
- complete
  - at least four Year 12 ATAR courses **OR**
  - at least five Year 12 General courses and/or ATAR courses or equivalent **OR**
  - a Certificate II VET qualification (or a Certificate III, or a Certificate IV qualification that is on the *Certificate IV Specified List*) in combination with ATAR, General or Foundation courses.

## 2. Literacy and numeracy standard

For the WACE literacy and numeracy standard you may:

- prequalify through the reading, writing and numeracy tests of the Year 9 National Assessment Program – Literacy and Numeracy (NAPLAN), or;
- demonstrate the minimum standard of literacy and numeracy by successfully completing the relevant components of the Online Literacy and Numeracy Assessment (OLNA) in Year 10, 11 or 12.

## 3. Breadth and depth

You must complete a minimum of 20 units, which may include unit equivalents attained through VET and/or endorsed programs. This requirement must include at least:

- a minimum of ten Year 12 units, or the equivalent
- four units from an English course, post-Year 10, including at least one pair of Year 12 units from an English learning area course
- one pair of Year 12 units from each of List A (arts/languages/social sciences) and List B (mathematics/science/technology) subjects.

## 4. Achievement standard

You must achieve at least 14 C grades or higher (or equivalents) in Year 11 and Year 12 units, including at least six C grades (or equivalents) in Year 12 units.

## 5. Unit equivalents

Unit equivalents can be awarded through VET qualifications and/or endorsed programs. The maximum number of unit equivalents available through VET and endorsed programs is four Year 11 units and four Year 12 units with a maximum of four units with endorsed programs – two in Year 11 and two in Year 12.

## Course options

Year 11 gives you the opportunity to choose courses that reflect your strengths and interests, and support your career aspirations. When selecting your courses for Year 11, consider that you are more likely to do well if you enjoy the courses you study.

The Authority provides a wide range of courses and programs for Year 11 and Year 12 students. Schools then make decisions about which courses and programs they will offer. These decisions are based on a range of factors, such as resources, staffing and community need.

There are four types of WACE courses – ATAR, General, VET industry specific and Foundation courses.

### WACE courses

#### Australian Tertiary Admission Rank (ATAR) courses

Australian Tertiary Admission Rank (ATAR) courses are designed for students who are typically aiming to go to university. These courses are examined by the Authority and contribute to the achievement of an ATAR. Students who do not sit the ATAR course examination will not have a course mark or grade recorded on their WASSA, nor will they receive an ATAR course report unless they have an approved *Sickness/Misadventure Application*.

Note: for ATAR courses with practical components, students must complete both the written and practical examinations (and SPEA, where applicable).

#### General courses

General courses are designed for students who are typically aiming to enter vocationally based training or the workforce directly from school. These courses are not examined by the Authority. However, they each have an externally set task (EST) in Year 12, which is set by the Authority.

#### Vocational education and training (VET) industry specific courses

These courses are designed for students typically aiming to enter further vocationally based training or the workforce directly from school. They include a full Australian Qualifications Framework (AQF) qualification, mandatory workplace learning and contribute to the Certificate II requirement for the achievement of the WACE. VET industry specific courses count towards your WACE as course unit credit, which allows you to include more VET in your secondary education program.

#### Foundation courses

Foundation courses are designed for students who have not been able to demonstrate the minimum standard of numeracy and Standard Australian English (SAE) literacy skills for the WACE before Year 11 and are unlikely to do so before the end of Year 12 without significant levels of support.

Foundation courses are not designed, nor intended, to be an alternative senior secondary pathway. These courses are not examined by the Authority. However, they each have an externally set task (EST) in Year 12 which is set by the Authority.

Foundation courses provide a focus on functional literacy and numeracy skills within the context of the subject, practical work-related experience and the opportunity to build personal skills that are important for life and work.

The **only** students who may enrol in Foundation courses in Semester 1 of Year 11 are those who have not yet demonstrated the minimum standard of literacy and/or numeracy by the end of Year 10.

Students who have demonstrated the minimum standard of literacy and/or numeracy by the end of Year 10 **are not** eligible to enrol in the Foundation courses in Year 11.

Students who have not demonstrated the minimum literacy standard are permitted to enrol in both the List A and List B Foundation courses and, if the literacy standard is not achieved before the end of Semester 1 of Year 11 (including results from Term 2 Window B), remain enrolled in Foundation courses until the end of Year 12.

Students who demonstrate the minimum standard of:

- literacy in Semester 1 of Year 11 are not eligible to continue in the List A Foundation courses in Semester 2 of that year
- numeracy in Semester 1 of Year 11 are not eligible to continue in the Foundation List B courses unless they are yet to demonstrate the minimum literacy standard
- literacy in Semester 2 of Year 11 or during Year 12 will be permitted to continue in Year 12 in Foundation English and their other List A and List B Foundation courses studied in Year 11
- numeracy in Semester 2 of Year 11 or during Year 12 will be permitted to continue in Year 12 Foundation Mathematics and their other List B Foundation courses in Year 11.

A full list of courses and their codes is provided in the [WACE Manual](#).

If you enrol in a Foundation course in Year 12, you **must** complete a Certificate II or III qualification, or a Certificate IV qualification that is on the Authority's *Certificate IV Specified List* to achieve your WACE (partial completion rules apply for Certificate III and Certificate IV VET qualifications). This is to make sure you are well prepared for the workforce or further training.

### **Preliminary courses**

Preliminary courses are for students who have been identified as having a learning difficulty and/or an intellectual disability. They provide a relevant option for students when it is understood that:

- the student cannot access the ATAR, General or Foundation course content with adjustment and/or disability provisions
- the Preliminary units do not contribute to achievement of a WACE.

Preliminary courses are for students who have been identified as having a recognised disability under the *Disability Discrimination Act 1992* and meet the above criteria.

## **VET and endorsed programs**

### **General features of programs**

The general features of the program types are summarised below.

#### **VET**

VET qualifications are for students wishing to participate in nationally recognised training. All VET qualifications require registered training organisation (RTO) delivery, assessment and quality control under the relevant VET regulatory body. Completing a Certificate II or Certificate III qualification, or Certificate IV level qualification that is on the Authority's *Certificate IV Specified List* is one option for meeting the requirements to achieve a WACE. VET credit transfer can contribute up to eight of the 20 units you need to achieve a WACE. These qualifications contribute to the WACE as unit equivalents.

Students may have their VET achievements contribute to the WACE either as:

- a VET industry specific course
- VET credit transfer (the mechanism by which VET qualifications may be used to substitute for a specified number of WACE course units – see also unit equivalents)
- a combination of the above.

There are special circumstances in which a partly completed Certificate III qualification or Certificate IV qualification that is on the Authority's *Certificate IV Specified List* may meet the minimum requirement of a Certificate II, if this option is chosen from the three general completion options available.

For more information on how VET contributes towards your WACE, visit the VET page of the Authority website at <http://senior-secondary.scsa.wa.edu.au/vet/how-vet-contributes-towards-wace>. It is important you check with your school to confirm that your VET qualification will meet the requirements to contribute to the WACE.

**Figure 2. How VET contributes towards the WACE**

### Standard

VET credit transfer reduces the number of course units in which a C grade is required.\*

VET industry specific courses contribute in the same manner as a C grade or higher in other ATAR course units.

### Breadth

VET industry specific courses or VET credit transfer programs do not contribute to the breadth requirement.

### Depth

VET credit transfer contributes towards the depth requirement as unit equivalence.\*

\*A maximum of eight unit equivalents can contribute towards the WACE (standard and depth requirements) if completed through a VET credit transfer arrangement.

Note: VET qualifications **do not** contribute to the WACE breadth of study requirement because they are not identified as List A or List B subjects.

### Endorsed programs

These programs provide access to areas of learning not covered by WACE courses or VET programs and contribute to the WACE as unit equivalents. Endorsed programs may replace up to two Year 11 course units and two Year 12 course units you need to achieve your WACE.

Endorsed programs can be delivered in a variety of settings by schools, community organisations, universities, training organisations and workplaces.

There are many endorsed programs which can contribute towards achievement of the WACE. An endorsed program may have been developed by the Authority, or it may have been developed by a private provider, a school or a university and subsequently endorsed by the Authority.

See the Authority website for the full list of currently endorsed programs and their unit equivalent allocation at <http://senior-secondary.scsa.wa.edu.au/vet/endorsed-programs>.

### **Tertiary preparation endorsed programs**

TPEPs are developed by tertiary education providers, such as a university. TPEPs recognise structured learning that results in the attainment of a quality-assured certificate.

The Authority-developed ATAR courses are designed to prepare students for tertiary studies with input from teachers representing schools across Western Australia, representatives of Western Australian universities and other subject matter experts.

To ensure students are receiving the best preparation for tertiary studies, the Board has determined that students wanting to undertake a TPEP and be awarded unit equivalents to contribute towards WACE achievement, must complete at least one Year 12 ATAR course. Students who are in Year 10 in 2026 should consider this in making their course selections. It is recommended that students intending to undertake a Year 12 ATAR course consider undertaking Year 11 ATAR course/s.

To support students during the transition period to this new element of the WACE, the Authority has released criteria and a process for schools to accommodate students in specific circumstances from having to complete at least one Year 12 ATAR course for a TPEP to contribute at least one unit equivalent.

The TPEP accommodation application form and frequently asked questions can be found on the Authority website at <https://senior-secondary.scsa.wa.edu.au/vet/endorsed-programs>.

You should discuss endorsed program opportunities with the appropriate staff member at your school.



Graphic: nadia\_bormotova, 2023

## Starting points for subject selection

Questions	Notes
What are your interests, abilities and goals?	
What courses and programs are available at your school?	
What combination of courses do you need for your WACE?	
What are the prerequisites for courses and training you are interested in?	
What would you like to do after school?	

## Examples of some study options for students

Table 1 shows examples of some study options for students. They do not represent the minimum requirements to achieve a WACE, which have previously been described.

**Table 1: Examples of study options**

Year	ATAR (pairs)	General (pairs)	Foundation (pairs)	Cert II + (unit equiv.)	Endorsed (unit equiv.)	Unit total (inc. unit equiv.)	ATAR Eligible*	WACE Eligible
11	6	-	-	-	-	12	Y	Y
12	6	-	-	-	-	12		
11	5	-	-	-	-	10	Y	Y
12	4	1	-	-	-	10		
11	4	2	-	-	-	12	Y	Y
12	4	1	-	-	1	11		
11	-	4	-	-	2	10	N	Y
12	-	4	-	-	2	12		
11	3	1	-	-	2	10	Y	Y
12	4	2	-	-	-	12		
11	-	5	-	-	-	10	N	Y
12	-	5	-	-	-	10		
11	2	3	-	-	-	10	N	Y
12	1	4	-	-	1	11		
11	-	5	-	-	-	10	N	Y
12	-	4	-	-	2	10		
11	-	5	-	-	1	11	N	Y
12	-	5	-	-	1	11		
11	-	4	2	-	-	12	N	N <sup>†</sup>
12	-	3	2	-	-	10		
11	-	2	2	2	-	10	N	Y
12	-	3	1	2	1	11		

Year	ATAR (pairs)	General (pairs)	Foundation (pairs)	Cert II + (unit equiv.)	Endorsed (unit equiv.)	Unit total (inc. unit equiv.)	ATAR Eligible*	WACE Eligible
11	1	2	-	4	-	10	N	Y
12	1	2	-	4	-	10		
11	-	4	-	-	2 (TPEP)	8	N	N <sup>‡</sup>
12	-	4	-	-	2 (TPEP)	8		
11	1	3	-	-	2 (TPEP)	10	N	Y
12	1	3	-	-	2 (TPEP)	10		
11	-	4	-	2 (Cert IV Specified List)	1	11	N	Y
12	-	4	-	4 (Cert IV Specified List)	1	13		
11	-	4	-	0 (Cert IV not on the Specified List)	-	8	N	N <sup>§</sup>
12	-	4	-	0 (Cert IV not on the Specified List)	-	8		

\*Calculation of an ATAR may be affected by conditions set by TISC (see Undergraduate Admission Requirements for School Leavers at <http://www.tisc.edu.au/static/guide/admission-req-sleaver.tisc>).

<sup>†</sup>Students completing Foundation units are required to complete a Certificate II (or a Certificate III, or a Certificate IV on the Authority's *Certificate IV Specified List*).

<sup>‡</sup>Students are required to complete at least one Year 12 ATAR course to receive unit equivalents from a TPEP for WACE achievement. Without an ATAR, the TPEP is not awarded as unit equivalents.

<sup>§</sup> From 2028, the Authority will only provide unit equivalents towards WACE achievement for completed or partially completed Certificate IV qualifications delivered by identified registered training organisations (RTOs) that appear on the *Certificate IV Specified List* available on the Authority website at <https://senior-secondary.scsa.wa.edu.au/vet/all-about-vet>.

**Figure 3. Sample programs – WACE in 2028**

### Jen and Tim – Sample set 1

Jen enjoys puzzles and problem solving and wants to study architecture or engineering at university. She loves being part of a team and wants a career that will combine her creative and critical thinking skills.

#### Year 11

AECHE	Chemistry
AEDES	Design
AELIT	Literature
AEMAM	Mathematics Methods
AEMAS	Mathematics Specialist
AEPHY	Physics

#### Year 12

ATCHE	Chemistry
ATDES	Design
ATLIT	Literature
ATMAM	Mathematics Methods
ATMAS	Mathematics Specialist
ATPHY	Physics

Tim is also thinking about a career in architecture in the long term, but he is planning to go to TAFE to get a qualification in drafting first. Tim does not need an ATAR, but he wants to try some ATAR courses.

#### Year 11

AEDES	Design
AEMAA	Mathematics Applications
GEAIT	Applied Information Technology
GEENG	English
Cert II	Building and Construction
ADWPL	Workplace Learning (2 unit equivalents)

#### Year 12

ATDES	Design
ATMAA	Mathematics Applications
GTAIT	Applied Information Technology
GTENG	English
Cert II	Building and Construction
ADWPL	Workplace Learning (2 unit equivalents)

### Alex and Michael – Sample set 2

Alex loves food and cooking and plans to follow that passion into a career. He likes thinking on his feet and feels he is suited to a fast-paced restaurant kitchen. Alex is aiming for an apprenticeship and enrolment at a TAFE after school.

#### Year 11

GEELD	English as an Additional Language/Dialect
GEFST	Food Science and Technology
GEHEA	Health Studies
GEMAE	Mathematics Essential
GESIP	Science in Practice
ADCS	Community Service (two unit equivalents)

#### Year 12

GTELD	English as an Additional Language/Dialect
GTFST	Food Science and Technology
GTHEA	Health Studies
GTMAE	Mathematics Essential
GTSIP	Science in Practice
ADCS	Community Service (two unit equivalents)

Michael likes food and entertaining, but food preparation is not his strong suit. While he's thinking about a career in hospitality, he doesn't know whether he wants to go to TAFE or straight to work.

#### Year 11

GEENG	English
GEBME	Business Management and Enterprise
GEMUS	Music
GEREL	Religion and Life
Cert II	Hospitality
ADWPL	Workplace Learning (two unit equivalents)

#### Year 12

GTENG	English
GTBME	Business Management and Enterprise
GTMUS	Music
GTREL	Religion and Life
Cert II	Hospitality
ADWPL	Workplace Learning (two unit equivalents)

### Sam and Franki – Sample set 3

Sam likes being around people and would love to use their people skills working in an office. Sam wants to improve their literacy and numeracy skills and get ready for the workplace.

#### Year 11

GECEM	Careers and Employability
GEENG	English
GEHAS	Humanities and Social Sciences in Action
GEMAE	Mathematics Essential
GEOED	Outdoor Education
ADCS	Community Service (two unit equivalents)

#### Year 12

GECEM	Careers and Employability
GTENG	English
GTHAS	Humanities and Social Sciences in Action
GTMAE	Mathematics Essential
GTOED	Outdoor Education
ADCS	Community Service (two unit equivalents)

Franki wants to run his own business. He enjoys designing and making a range of clothes and looks forward to pursuing a career in fashion. Franki is confident about his creative abilities and wants to take advantage of courses that will help his entrepreneurial dreams.

#### Year 11

GEBME	Business Management and Enterprise
GEDES	Design
GEENG	English
GEMDT	Materials Design and Technology (Textiles)
Cert II	Workplace Skills
ADWPL	Workplace Learning (two unit equivalents)

#### Year 12

GTBME	Business Management and Enterprise
GTDES	Design
GTENG	English
GTMDT	Materials Design and Technology (Textiles)
Cert II	Workplace Skills
ADWPL	Workplace Learning (two unit equivalents)

### Sue and Dev – Sample set 4

Sue wants to become an archaeologist and has decided to complete a Tertiary preparation endorsed program (TPEP). Taking a TPEP for unit equivalents means Sue must complete at least one Year 12 ATAR course; she has chosen four.

#### Year 11

AECHE	Chemistry
AECEO	Geography
AEHIA	Ancient History
AELIT	Literature
PECUP1	Future Ready Skills
PECUP2	Academic Literacies

#### Year 12

ATCHE	Chemistry
ATGEO	Geography
ATHIA	Ancient History
ATLIT	Literature
PECUP3	Mathematics
PECUP4	Society and Cultural Studies

Dev hopes to pursue a career in public policy and is looking forward to studying Arts and Humanities at university. He is choosing a TPEP for unit equivalents with a mix of General and ATAR courses.

#### Year 11

AEECO	Economics
AEPAL	Politics and Law
GEENG	English
GEHEA	Health Studies
GEMPA	Media Production and Analysis
PMUFTH	FlexiTrack High (over two years)

#### Year 12

ATECO	Economics
ATPAL	Politics and Law
GTENG	English
GTHEA	Health Studies
GTMPA	Media Production and Analysis
PMUFTH	FlexiTrack High (over two years)

## Ian and Elena – Sample set 5

Ian wants to become a primary school teacher. He is working towards a Duke of Edinburgh's International Award – Gold and might use it as an endorsed program for four unit equivalents. His course selection starts with five WACE courses.

### Year 11

AEBLY	Biology
AEENG	English
AECEO	Geography
AEMAM	Mathematics Methods
GECFC	Children, Family and the Community

### Year 12

ATBLY	Biology
ATENG	English
ATGEO	Geography
ATMAM	Mathematics Methods
GTCFC	Children, Family and the Community

Elena is not sure of what she wants to do after school, so her subject selection is based on the Year 10 courses she likes. Her plan is to do her best and be well positioned by the end of Year 12.

### Year 11

GEAIS	Aboriginal and Intercultural Studies
GEDAN	Dance
GEENG	English
GEMAE	Mathematics Essential
ADCS	Community Service (two unit equivalents)

### Year 12

GTAIS	Aboriginal and Intercultural Studies
GTDAN	Dance
GTENG	English
GTMAE	Mathematics Essential
ADCS	Community Service (two unit equivalents)

## Lou and Kim – Sample set 6

Lou is working towards demonstrating the literacy and numeracy standard. He is starting his course selection with Foundation units and a Certificate II VET qualification.

### Year 11

FEAIT	Applied Information Technology
FECAE	Career and Enterprise
FEENG	English
FEMAT	Mathematics
Cert II	Automotive Vocational Preparation

### Year 12

FTAIT	Applied Information Technology
FTCAE	Career and Enterprise
FTENG	English
FTMAT	Mathematics
Cert II	Automotive Vocational Preparation

Kim plans a career in the travel industry and wants to continue learning Punjabi as a second language. She enjoys art and is very involved in a local photography club as a recreational pursuit.

### Year 11

AEENG	English
AEHBY	Human Biology
AEPSL	Punjabi: Second Language
AEVAR	Visual Arts
GEPES	Physical Education Studies
ADRP	Recreational Pursuits (two unit equivalents)

### Year 12

ATENG	English
ATHBY	Human Biology
ATPSL	Punjabi: Second Language
ATVAR	Visual Arts
GPES	Physical Education Studies
ADRP	Recreational Pursuits (two unit equivalents)

Note: these sample programs provide examples of course and program combinations. It is important to remember that they are a guide only and they are not exhaustive. Students should research and investigate the most appropriate combination of courses and programs to assist in meeting their future education, training or employment prospects.

## General advice for students

### Seek sound advice

- Collect relevant information about your post-school options for university, training and employment. Find out about the courses and careers that interest you and check whether there are any prerequisites that you need to factor into your course selection.
- Talk with the people who know your skills, abilities and interests, as well as those who have a sense of your goals and aspirations. Your teachers, year coordinators, counsellors, principal, deputy principal, parents, family and friends are all useful sounding boards. Take the time you need to talk about the decisions you are making and to listen to the advice you receive.

### Make wise choices

- Play to your strengths and build on your talents and skills. Choosing a subject on the basis of how you think it is scaled at the expense of one that you are good at or really enjoy doing may not pay the dividend you hope for in the long run.
- Be enthusiastic about what you are doing and work hard. It is worth bearing in mind that an easy option is not always the best option. When selecting your courses, balance being kind to yourself with offering yourself a challenge.
- Be positive and clear about your goals from the outset. You should review your goals from time to time to check how you are going in making progress and whether you are being challenged to do your best.

### Establish good routines

- It is important to get into good study habits early. Develop an effective routine that works for you and remember that you will need to be flexible as well as committed to it. Set yourself a regular schedule and map out your longer-term commitments. When you can see ahead of time that you might need to adjust your daily schedule, you can plan accordingly.
- Strike a balance between your commitments and priorities, including study, family, friends, extracurricular activities and part-time work. It is important to stay connected with your family and friends throughout Years 11 and 12. Share your schedule and plans with your family and friends, so they understand your commitments and priorities.
- Remember healthy habits are part of good routines. Keep your energy levels in check by starting the day with a healthy breakfast and having regular mealtimes with a balanced and nutritious diet. Stay hydrated by drinking around two litres of water a day and avoiding caffeinated, sugary and energy drinks. Exercise to energise your body and mind and take part in activities that will reduce stress and add balance to your life.

### Manage your stress

- Manage your commitments and aim to include some downtime in your schedule, even when you expect to be busy. If you are feeling overwhelmed, take a break and do something that makes you feel positive. Keeping a balanced lifestyle and continuing to do the things you love can help you stay relaxed and focused when it is time to study.
- Talk about how you are feeling about the things that may be causing you stress, especially if you have difficulty sleeping or concentrating. Check in with your teachers, year coordinators, counsellors, principal, deputy principal, parents, family and friends about how you are feeling. Ask for help if you need it.

## Other information

### Student Information website

The Authority has a Student Information website that can be accessed via the Authority website home page and at <https://student.scsa.wa.edu.au/>.

The student website provides students with easy access to information under the headings of:

- Student portal
- Getting organised
- Curriculum
- Examinations and testing
- Certification and post-school
- Frequently asked questions (FAQs)
- Advice for Year 12s – which may be of interest to students in other years.

The student website focuses on Year 12s and links closely to the *Year 12 Information Handbook 2026, Part I*.

### Student portal

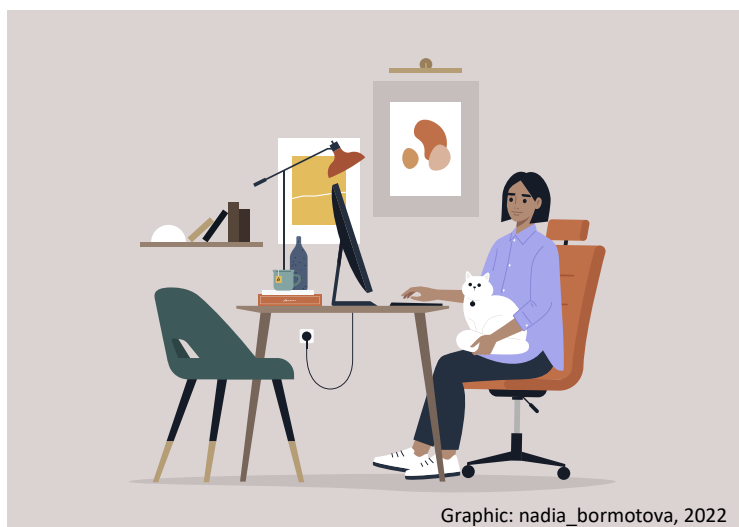
The student portal can be accessed at <https://student.scsa.wa.edu.au/student-portal>. Technical support for the portal is available via [wacehelp@scsa.wa.edu.au](mailto:wacehelp@scsa.wa.edu.au) (monitored from Monday to Friday between 8.00 am and 4.30 pm).

Year 10 students applying to enrol in a WACE language course for Year 11 will use the student portal to complete their application.

The student portal is a space for Year 12 students to check and access personal information that relates to their WACE.

When you are in Year 12, you will be able to visit the portal to:

- check your personal details
- check your enrolments
- complete the student declaration and permission when you are in Year 12, or as a Year 10 or Year 11 enrolled in a Year 12 course
- complete your Year 12 ATAR English as an Additional Language or Dialect (EAL/D) eligibility declaration
- download a copy of your approved equitable access adjustments for ATAR course examinations as a Year 12
- download a copy of your *Personalised practical examination timetable*, which states the date, time and venue for each practical examination you need to attend as a Year 12 (available in the year of examination)
- download a copy of the *Personalised written examination timetable*, which states the date, time and venue for each written examination you need to attend as a Year 12 (available in the year of examination)



Graphic: nadia\_bormotova, 2022

- check your results as a Year 12
- download a copy of your sickness/misadventure outcome from ATAR course examinations as a Year 12
- view and download digital copies of your WASSA, WACE and/or ATAR course reports.

You need your WA student number (WASN) – which you can find out through your school – and a password to access the student portal. When you visit the student portal for the first time you will be prompted to change your password.

Security restrictions mean information, such as your WASN, cannot be provided over the phone.

## Year 12 Information Handbook

The *Year 12 Information Handbook* is published each year. Part I, which contains information for all Year 12s in the current year, is published in March. Part II of the handbook, which focuses on ATAR course examinations, is published in July. You'll find them at

<https://www.scsa.wa.edu.au/publications/year-12-information>.

## WACE Checker

In Years 11 and 12 you will be able to use the WACE Checker published by the Authority to check your progress towards meeting the WACE requirements. It is designed to determine whether you have met (or are expected to meet) each of the WACE requirements.

You can test your choices by considering the grades you expect you would achieve and see how different combinations would help you meet the requirements. When using the WACE Checker, it is important to be realistic and positive about your projected performance, and also remember it is a guide.

If you have any concerns about your progress towards achieving your WACE after using the WACE Checker, speak to the support staff at your school.

## Social media

The Authority has two Facebook pages.

<https://facebook.com/SCSAWA> is for students in Years 10, 11 and 12, their parents, teachers and community stakeholders. The aim of the page is to provide information to students working towards the WACE and a WASSA, particularly in Year 12. It is also a way to contact us if you have questions.

<https://facebook.com/SCSAWateachers> is for teachers and community stakeholders. The aim of the page is to provide information to teachers delivering the Western Australian curriculum from Kindergarten to Year 12. Reminders about key dates, as listed in the *Activities Schedule*, are published on this page.

## Response times

The Authority's office hours are 8.00 am to 4.30 pm from Monday to Friday, excluding public holidays. Our social media accounts are formally monitored during these hours. A response to a question or comment may not be immediate, due to checking processes and other commitments. Decisions on out-of-hours responses are made on a case-by-case basis and are dependent on staff availability. We always do our best to respond to you within two working days.

## Community standards

We welcome your feedback, comments and questions through social media, but be aware that we moderate our Facebook pages.

The Authority treats its Facebook pages as ‘family friendly’ and has a zero tolerance approach to rude language and abusive or offensive posts. Comments and messages that are off topic are treated as spam.

### Contact us

Students, teachers and stakeholders are encouraged to use the Authority’s Facebook pages to access information and stay in touch with the Authority.

We also have an email address if you prefer not to use social media. You can email us at [info@scsa.wa.edu.au](mailto:info@scsa.wa.edu.au).

### Parents and Community website

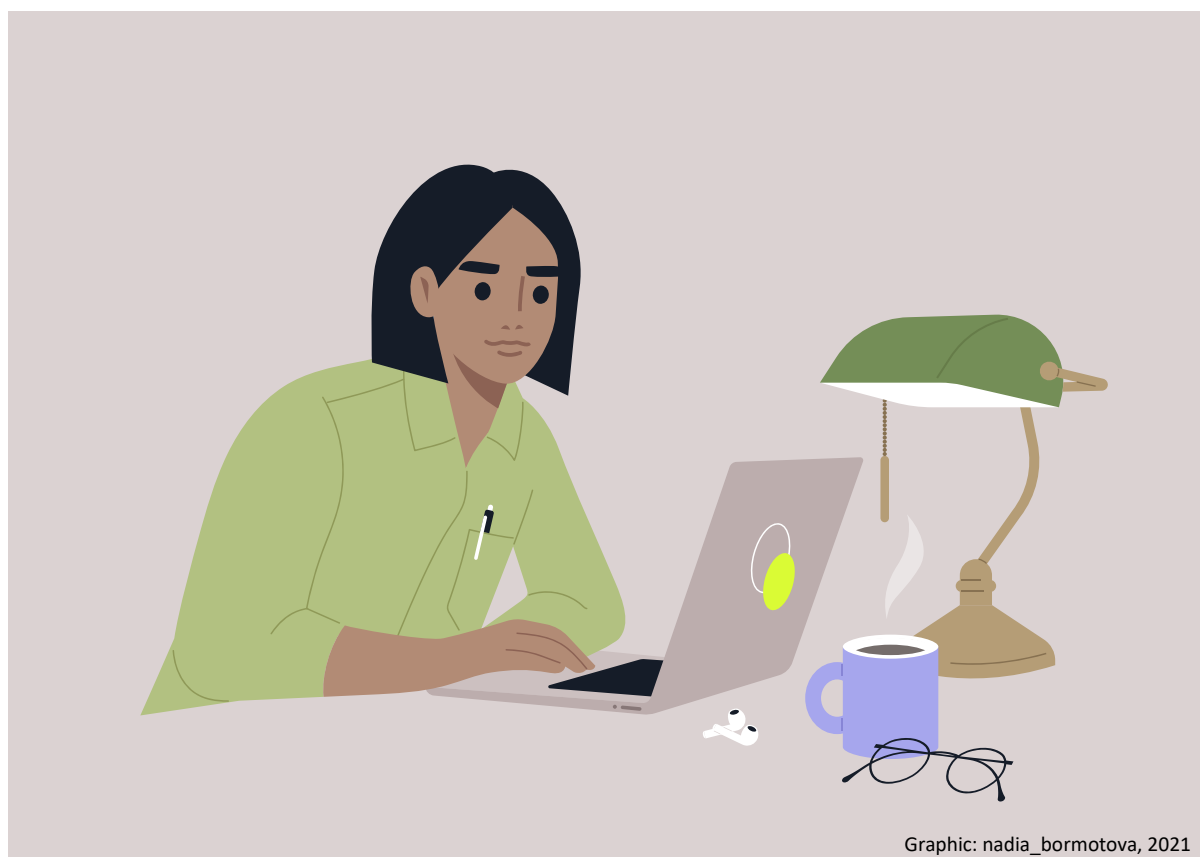
The Authority’s Parents and Community website is designed to support parents and members of the community. It can be accessed on the Authority website at <https://www.scsa.wa.edu.au> via the Parents and Community tab.

The website has been developed for parents and community members as a guide to:

- the *Western Australian Curriculum and Assessment Outline (the Outline)*, Kindergarten through to Year 10
- the Western Australian Certificate of Education (WACE), Years 11 and 12.

Parents and the community can access information about:

- what children and young people should learn
- how they are assessed
- the standards children and young people are expected to reach at each year level
- advice for parents of Year 12s – which may be of interest to parents of students in other years.



Graphic: nadia\_bormotova, 2021

## Appendix 1: List A and List B subjects

To ensure an appropriate breadth of study in your senior secondary studies, you are required to complete **at least one** pair of Year 12 units **from each** of List A and List B subjects.

### List A (arts/languages/social sciences)

Course	Code	Course	Code
Aboriginal and Intercultural Studies	AIS	Indonesian: Background Language**†	INB
Aboriginal Languages of Western Australia†	ABL	Indonesian: Second Language	IND
Agribusiness†	AGB	Italian: Background Language**†	ITB
Ancient History	HIA	Italian: Second Language	ISL
Arabic*	ARB	Japanese: Background Language**†	JBL
Auslan*	AUS	Japanese: Second Language	JSL
Business Management and Enterprise	BME	Korean: Background Language**†	KOB
Career and Enterprise <sup>§</sup>	CAE	Korean: Second Language†	KOR
Careers and Employability†	CEM	Latin*	LAT
Children, Family and the Community†	CFC	Literature†	LIT
Chinese: Background Language**†	CBL	Media Production and Analysis	MPA
Chinese: First Language†	CFL	Modern Greek*	GRE
Chinese: Second Language	CSL	Modern History	HIM
Dance	DAN	Music	MUS
Drama	DRA	Persian*	PER
Economics†	ECO	Philosophy and Ethics†	PAE
English	ENG	Polish*	POL
English as an Additional Language or Dialect	ELD	Politics and Law†	PAL
French: Background Language**†	FBL	Punjabi: Background Language**†	PBL
French: Second Language	FSL	Punjabi: Second Language**†	PSL
Geography	GEO	Religion and Life	REL
German: Background Language**†	GBL	Russian*	RUS
German: Second Language	GSL	Sinhala*	SIN
Health Studies	HEA	Spanish*	SPA
Hebrew*	HEB	Tamil: Background Language**†	TBL
Hindi: Background Language**†	HBL	Tamil: Second Language**†	TML
Hindi: Second Language**†	HDI	Turkish*	TUR
Humanities and Social Sciences in Action‡	HAS	Visual Arts	VAR

## List B (mathematics/science/technology)

Course	Code	Course	Code
Accounting and Finance	ACF	Human Biology	HBY
Agricultural Science and Technology <sup>†</sup>	AST	Marine and Maritime Studies	MMS
Animal Production Systems <sup>‡</sup>	APS	Materials Design and Technology	MDT
Applied Information Technology	AIT	Mathematics <sup>§</sup>	MAT
Automotive Engineering and Technology <sup>‡</sup>	AET	Mathematics Applications <sup>†</sup>	MAA
Aviation	AVN	Mathematics Essential <sup>†</sup>	MAE
Biology <sup>†</sup>	BLY	Mathematics Methods <sup>†</sup>	MAM
Building and Construction <sup>‡</sup>	BCN	Mathematics Specialist <sup>†</sup>	MAS
Chemistry	CHE	Outdoor Education	OED
Computer Science	CSC	Physical Education Studies	PES
Design	DES	Physics <sup>†</sup>	PHY
Earth and Environmental Science <sup>†</sup>	EES	Plant Production Systems <sup>‡</sup>	PPS
Engineering Studies	EST	Psychology	PSY
Food Science and Technology	FST	Science in Practice <sup>‡</sup>	SIP
Health, Physical and Outdoor Education <sup>§</sup>	HPO		

\*To count as a List A subject, these courses must be studied at a registered school/provider or at a community organisation through a registered school or provider. Where a student is enrolled in the examination for one of these courses as a non-school candidate, the course does not count for the WACE unit completion or breadth of study requirements.

<sup>†</sup>This course is available as an ATAR course only.

<sup>‡</sup>This course is available as a General course only.

<sup>§</sup>This course is available as a Foundation course only.

## Appendix 2: VET industry specific courses

Course	Code	VET industry specific qualification
Automotive (VET industry specific)	VAU	Certificate I in Automotive Vocational Preparation (VEVAU) Certificate II in Automotive Body Repair Technology (VEVAUB, VTVAUB) Certificate II in Automotive Vocational Preparation (VEVAUP, VTVAUP) Certificate II in Automotive Servicing Technology (VEVAUV, VTVAUV) <sup>‡</sup>
Business and Financial Services (VET industry specific)	VBF	Certificate I in Workplace Skills (VEVBF) Certificate II in Workplace Skills (VEVBFB, VTVBFB) Certificate III in Business (VEVBFS, VTVBFS) Certificate I in Basic Financial Literacy (VEVBFF) Certificate II in Financial Services (VEVBFN, VTVBFN)
Community Services and Health (VET industry specific)	VCS	Certificate II in Community Services (VEVCSS, VTVCSS) Certificate III in Early Childhood Education and Care (VEVCSC, VTVCS) Certificate III in School Based Education Support (VEVCSE, VTVCSSE) Certificate II in Health Support Services (VEVCSH, VTVCSH)
Construction Industries (VET industry specific)	VCO	Certificate I in Construction* (VEVCO) <sup>†</sup> Certificate II in Building and Construction* (Pathway – Trades) (VEVCO, VTVCO) <sup>††</sup> Certificate II in Plumbing* (VEVCOP, VTVCOP) Certificate II in Building and Construction Technical Support (VEVCON, VTVCON) Certificate I in Resources and Infrastructure Operations (VEVCOR) <sup>†</sup> Certificate II in Civil Construction (VEVCOR, VTVCOR) <sup>†</sup> Certificate II in Data and Voice Communications (VEVCOD, VTVCOD) Certificate II in Electrotechnology – Career Start* (VEVCOE, VTVCOE) <sup>‡</sup>
Creative Industries (VET industry specific)	VCI	Certificate II in Music (VEVCI, VTVCI) Certificate III in Music (VEVCIT, VTVCI) Certificate I in Aboriginal or Torres Strait Islander Cultural Arts (VEVCIC) Certificate II in Visual Arts (VEVCIV, VTVCIV) Certificate III in Visual Arts (VEVCIA, VTVCIA) Certificate II in Creative Industries (VEVCIN, VTVCIN) <sup>†</sup> Certificate III in Screen and Media (VEVCID, VTVCID)
Engineering (VET industry specific)	VEN	Certificate I in Engineering (VEVEN) <sup>†</sup> Certificate II in Engineering Pathways (VEVENV, VTVENV) Certificate II in Engineering* (VEVEN, VTVEN) <sup>††</sup>
Hospitality and Tourism (VET industry specific)	VHT	Certificate I in Hospitality (VEVHT) Certificate II in Hospitality (VEVHTF, VTVHTF) Certificate II in Cookery (VEVHTK, VTVHTK) Certificate I Tourism (Australian Indigenous Culture) (VEVHTO) Certificate II in Tourism (VEVHTU, VTVHTU)

Course	Code	VET industry specific qualification
Information and Communications Technology (VET industry specific)	VIT	Certificate II in Applied Digital Technologies (VEVITG, VTVITG) Certificate III in Information Technology (VEVITS, VTVITS)
Primary Industries (VET industry specific)	VPI	Certificate I in Agriculture (VEVPIF) Certificate II in Agriculture (VEVPIA, VTVPIA) <sup>†</sup> Certificate II in Rural Operations (VEVPIA, VTVPIA) <sup>†</sup>
Sport and Recreation (VET industry specific)	VSR	Certificate I in Sport and Recreation (VEVSR) Certificate II in Sport and Recreation (VEVSRS, VTVSRS) <sup>†</sup> Certificate II in Sport Coaching (VEVSRS, VTVSRS) <sup>†</sup>

\*These VET industry specific qualifications require more WPL than other qualifications at the same levels. This was a request from the Industry Training Council (ITC).

<sup>†</sup>Qualifications which have significant overlap of units of competency have been given the same course code to avoid dual credit for the same content.

<sup>‡</sup>Refer to the latest [VET Qualifications register for Secondary Students](#) for details on relevant delivery options.

Note: VET industry specific courses are not available for offshore international schools.

### Appendix 3: Preliminary courses

<b>Course</b>	<b>Code</b>	<b>Course</b>	<b>Code</b>
Business Management and Enterprise	BME	Materials Design and Technology	MDT
English	ENG	Mathematics	MAT
Food Science and Technology	FST	Religion and Life	REL
Health and Physical Education	HPE	Visual Arts	VAR

## Appendix 4: Other information you may wish to access

### Courses – Year 11 and 12

<https://senior-secondary.scsa.wa.edu.au/syllabus-and-support-materials>

### Equitable access to assessments

<https://senior-secondary.scsa.wa.edu.au/assessment/equitable-access-assessment-policy>

### Eligibility criteria for languages and EAL/D courses

<https://senior-secondary.scsa.wa.edu.au/syllabus-and-support-materials/languages>

### Endorsed programs

<https://senior-secondary.scsa.wa.edu.au/syllabus-and-support-materials/endorsed-programs>

### Online Literacy and Numeracy Assessment (OLNA)

<https://senior-secondary.scsa.wa.edu.au/assessment/olna>

### School-based assessment

<https://senior-secondary.scsa.wa.edu.au/assessment/school-based-assessment>

### Vocational Education and Training (VET)

<https://senior-secondary.scsa.wa.edu.au/vet>

- VET industry specific courses
- VET credit transfer
- How VET contributes towards the WACE
- WACE recognition of VET accredited courses
- DTWD funded VET skill set
- News and frequently asked questions <https://senior-secondary.scsa.wa.edu.au/vet/faqs>

### The Western Australian Certificate of Education (WACE)

<https://senior-secondary.scsa.wa.edu.au/the-wace>

### ATAR examinations

<https://senior-secondary.scsa.wa.edu.au/assessment/examinations>

- Examination information
- University entrance
- Special provisions

### Past ATAR course examinations

<https://senior-secondary.scsa.wa.edu.au/further-resources/past-atar-course-exams>

### WASSA (Western Australian Statement of Student Achievement)

<https://senior-secondary.scsa.wa.edu.au/certification/wassa>



**© School Curriculum and Standards Authority**

Street address: 303 Sevenoaks Street, CANNINGTON WA 6107

Postal address: PO Box 816, CANNINGTON WA 6987

Telephone: (08) 9273 6300

Email: [info@scsa.wa.edu.au](mailto:info@scsa.wa.edu.au)

Website: [www.scsa.wa.edu.au](http://www.scsa.wa.edu.au)

Facebook: [facebook.com/scsawa](https://facebook.com/scsawa)